

## IGF-1 Rabbit pAb

CatalogNo: YT2288

### Key Features

#### Host Species

- Rabbit

#### Reactivity

- Human, Mouse, Rat

#### Applications

- IHC, IF, ELISA

#### Isotype

- IgG

### Storage

**Storage\*** -15°C to -25°C/1 year (Do not lower than -25°C)

**Formulation** Liquid in PBS containing 50% glycerol, 0.5% BSA and 0.02% sodium azide.

### Recommended Dilution Ratios

**IHC 1:100-1:300**

**ELISA 1:10000**

**IF 1:50-200**

### Basic Information

**Clonality** Polyclonal

### Immunogen Information

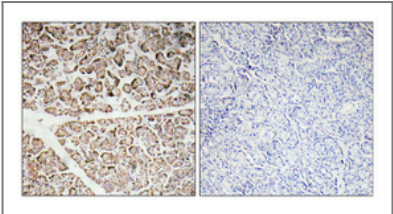
**Immunogen** The antiserum was produced against synthesized peptide derived from human IGF-I. AA range: 100-149

**Specificity** IGF-I Polyclonal Antibody detects endogenous levels of IGF-I protein.

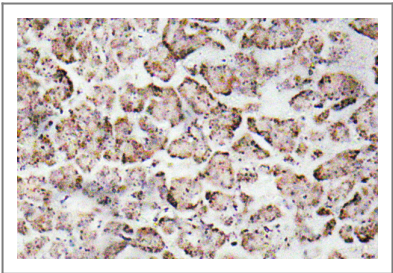
### Target Information

Gene name	IGF1 IBP1		
Protein Name	Insulin-like growth factor I		
	Organism	Gene ID	UniProt ID
	Human	<a href="#">3479;</a>	<a href="#">P05019;</a>
	Mouse	<a href="#">16000;</a>	
	Rat	<a href="#">24482;</a>	<a href="#">P08025;</a>
Cellular Localization	extracellular region,extracellular space,plasma membrane,insulin-like growth factor binding protein complex,platelet alpha granule lumen,alphav-beta3 integrin-IGF-1-IGF1R complex,insulin-like growth factor ternary complex,exocytic vesicle,		
Tissue specificity	Brain,Liver,PCR rescued clones,		
Function	Disease:Defects in IGF1 are the cause of insulin-like growth factor I deficiency (IGF1 deficiency) [MIM:608747]. IGF1 deficiency is an autosomal recessive disorder characterized by growth retardation, sensorineural deafness and mental retardation.,Function:The insulin-like growth factors, isolated from plasma, are structurally and functionally related to insulin but have a much higher growth-promoting activity.,online information:Insulin-like growth factor 1 entry,online information:The Singapore human mutation and polymorphism database,similarity:Belongs to the insulin family.,		

| Validation Data



Immunohistochemical analysis of paraffin-embedded Human pancreas. Antibody was diluted at 1:100(4° overnight). High-pressure and temperature Tris-EDTA,pH8.0 was used for antigen retrieval. Negative contrl (right) obtaned from antibody was pre-absorbed by immunogen peptide.



Immunohistochemistry analysis of IGF-I antibody in paraffin-embedded human pancreas tissue.

| Contact information

Orders: order.cn@immunoway.com  
Support: support.cn@immunoway.com  
Telephone: 400-8787-807(China)  
Website: <http://www.immunoway.com.cn>  
Address: 2200 Ringwood Ave San Jose, CA 95131 USA



Please scan the QR code  
to access additional  
product information:  
**IGF-1 Rabbit pAb**

---

For Research Use Only. Not for Use in Diagnostic Procedures.

[Antibody](#) | [ELISA Kits](#) | [Protein](#) | [Reagents](#)