

## MEK Kinase-6 Rabbit pAb

CatalogNo: YT2710

### Key Features

#### Host Species

- Rabbit

#### Reactivity

- Human, Mouse

#### Applications

- IHC, IF, ELISA

#### MW

- 143kD (Calculated)

#### Isotype

- IgG

### Recommended Dilution Ratios

IHC 1:100-1:300

ELISA 1:5000

IF 1:50-200

### Storage

#### Storage\*

-15°C to -25°C/1 year (Do not lower than -25°C)

#### Formulation

Liquid in PBS containing 50% glycerol, 0.5% BSA and 0.02% sodium azide.

### Basic Information

#### Clonality

Polyclonal

### Immunogen Information

#### Immunogen

The antiserum was produced against synthesized peptide derived from human MAP3K6. AA range: 281-330

#### Specificity

MEK Kinase-6 Polyclonal Antibody detects endogenous levels of MEK Kinase-6 protein.

### Target Information

**Gene name** MAP3K6

**Protein Name** Mitogen-activated protein kinase kinase kinase 6

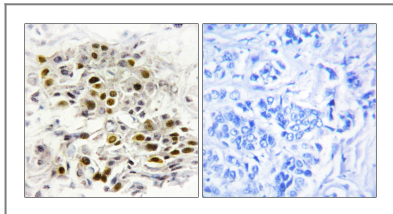
Organism	Gene ID	UniProt ID
Human	<a href="#">9064;</a>	<a href="#">O95382;</a>
Mouse	<a href="#">53608;</a>	<a href="#">Q9WTR2;</a>

**Cellular Localization** intracellular,

**Tissue specificity** Brain,PCR rescued clones,Skin,

**Function** Catalytic activity:ATP + a protein = ADP + a phosphoprotein.,cofactor:Magnesium.,enzyme regulation:Activated by phosphorylation on Thr-806. Catalytically active only when complexed with MAP3K5, with MAP3K5 supporting the stability and the active configuration of MAP3K6 and MAP3K6 activating MAP3K5 by direct phosphorylation.,Function:Component of a protein kinase signal transduction cascade. Activates the JNK, but not ERK or p38 kinase pathways.,similarity:Belongs to the protein kinase superfamily.,similarity:Belongs to the protein kinase superfamily. STE Ser/Thr protein kinase family. MAP kinase kinase kinase subfamily.,similarity:Contains 1 protein kinase domain.,subunit:Binds both upstream activators and downstream substrates in multimolecular complexes.,

## Validation Data



Immunohistochemistry analysis of paraffin-embedded human breast carcinoma tissue, using MAP3K6 Antibody. The picture on the right is blocked with the synthesized peptide.

## Contact information

Orders: [order.cn@immunoway.com](mailto:order.cn@immunoway.com)  
Support: [support.cn@immunoway.com](mailto:support.cn@immunoway.com)  
Telephone: 400-8787-807(China)  
Website: <http://www.immunoway.com.cn>  
Address: 2200 Ringwood Ave San Jose, CA 95131 USA



Please scan the QR code to access additional product information:  
**MEK Kinase-6**  
**Rabbit pAb**