

Nap1 Rabbit pAb

CatalogNo: YT2978

Key Features

Host Species

- Rabbit

Reactivity

- Human, Mouse, Rat

Applications

- WB, IHC, IF, ELISA

MW

- 48kD (Observed)

Isotype

- IgG

Recommended Dilution Ratios

WB 1:500-1:2000

IHC 1:100-1:300

IF 1:200-1:1000

ELISA 1:20000

Not yet tested in other applications.

Storage

Storage* -15°C to -25°C/1 year (Do not lower than -25°C)

Formulation Liquid in PBS containing 50% glycerol, 0.5% BSA and 0.02% sodium azide.

Basic Information

Clonality Polyclonal

Immunogen Information

Immunogen The antiserum was produced against synthesized peptide derived from human AZI2. AA range:10-59

Specificity Nap1 Polyclonal Antibody detects endogenous levels of Nap1 protein.

Target Information

Gene name AZI2

Protein Name 5-azacytidine-induced protein 2

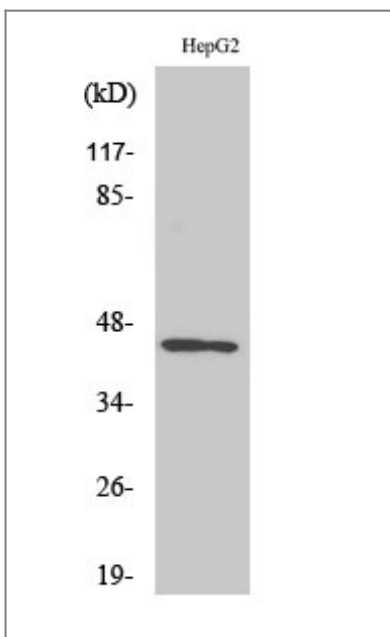
Organism	Gene ID	UniProt ID
Human	64343 ;	Q9H6S1 ;
Mouse	27215 ;	Q9QYP6 ;
Rat	316051 ;	Q4KMA0 ;

Cellular Localization Cytoplasm .

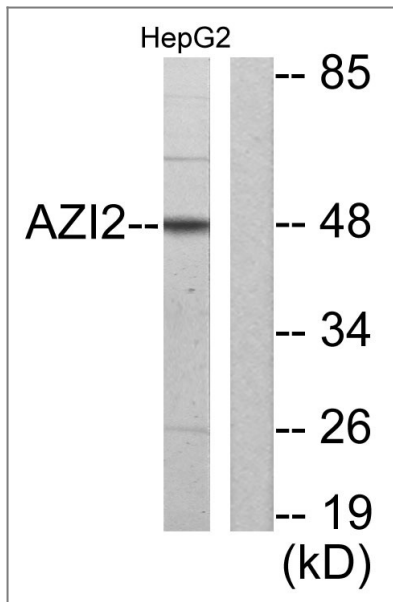
Tissue specificity Widely expressed (PubMed:14560022). Abundant expression seen in the pancreas and testis (PubMed:14560022).

Function Function:Activates serine/threonine-protein kinase TBK1 and facilitates its oligomerization. Enhances the phosphorylation of NF-kappa-B p65 subunit RELA by TBK1. Promotes TBK1-induced as well as TNF-alpha or PMA-induced activation of NF-kappa-B. Participates in IFN-beta promoter activation via TICAM1.,subunit:Interacts with IKBKE, TBK1 and TICAM1.,tissue specificity:Widely expressed. Abundant expression seen in the pancreas and testis.,

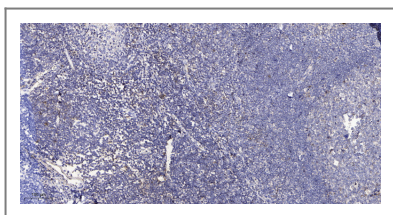
Validation Data



Western Blot analysis of various cells using Nap1 Polyclonal Antibody



Western blot analysis of lysates from HepG2 cells, using AZI2 Antibody. The lane on the right is blocked with the synthesized peptide.



Immunohistochemical analysis of paraffin-embedded human tonsil. 1, Antibody was diluted at 1:200(4° overnight). 2, Tris-EDTA,pH9.0 was used for antigen retrieval. 3,Secondary antibody was diluted at 1:200(room temperature, 30min).

Contact information

Orders: order.cn@immunoway.com
 Support: support.cn@immunoway.com
 Telephone: 400-8787-807(China)
 Website: <http://www.immunoway.com.cn>
 Address: 2200 Ringwood Ave San Jose, CA 95131 USA



Please scan the QR code to access additional product information:
Nap1 Rabbit pAb

For Research Use Only. Not for Use in Diagnostic Procedures.

[Antibody](#) | [ELISA Kits](#) | [Protein](#) | [Reagents](#)