

NT-4 Rabbit pAb

CatalogNo: YT3197

Key Features

Host Species

- Rabbit

Reactivity

- Human, Mouse, Rat

Applications

- IHC, IF, ELISA

MW

- 22kD (Calculated)

Isotype

- IgG

Recommended Dilution Ratios

IHC 1:100-1:300

ELISA 1:10000

IF 1:50-200

Storage

Storage*

-15°C to -25°C/1 year (Do not lower than -25°C)

Formulation

Liquid in PBS containing 50% glycerol, 0.5% BSA and 0.02% sodium azide.

Basic Information

Clonality

Polyclonal

Immunogen Information

Immunogen

The antiserum was produced against synthesized peptide derived from human NT-4. AA range: 71-120

Specificity

NT-4 Polyclonal Antibody detects endogenous levels of NT-4 protein.

Target Information

Gene name NTF4

Protein Name Neurotrophin-4

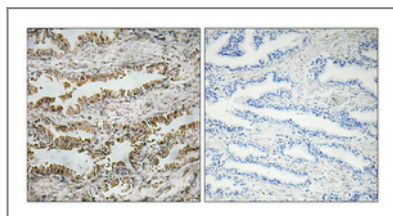
Organism	Gene ID	UniProt ID
Human	4909 ;	P34130 ;
Mouse	78405 ;	Q80VU4 ;
Rat	25730 ;	P34131 ;

Cellular Localization Secreted.

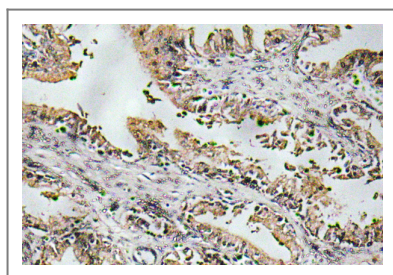
Tissue specificity Highest levels in prostate, lower levels in thymus, placenta, and skeletal muscle. Expressed in embryonic and adult tissues.

Function Function:Target-derived survival factor for peripheral sensory sympathetic neurons.,similarity:Belongs to the NGF-beta family.,tissue specificity:Highest levels in prostate, lower levels in thymus, placenta, and skeletal muscle. Expressed in embryonic and adult tissues.,

| Validation Data



Immunohistochemical analysis of paraffin-embedded Human prostate cancer. Antibody was diluted at 1:100(4° overnight). High-pressure and temperature Tris-EDTA,pH8.0 was used for antigen retrieval. Negative contrl (right) obtained from antibody was pre-absorbed by immunogen peptide.



Immunohistochemistry analysis of NT-4 antibody in paraffin-embedded human prostate carcinoma tissue.

| Contact information

Orders: order.cn@immunoway.com
Support: support.cn@immunoway.com
Telephone: 400-8787-807(China)
Website: <http://www.immunoway.com.cn>
Address: 2200 Ringwood Ave San Jose, CA 95131 USA



Please scan the QR code to access additional product information:
NT-4 Rabbit pAb

