

Olfactory receptor 2D2 Rabbit pAb

CatalogNo: YT3303

Key Features

Host Species

- Rabbit

Reactivity

- Human

Applications

- IF,ELISA

MW

- 34kD (Calculated)

Isotype

- IgG

Recommended Dilution Ratios

IF 1:200-1:1000

ELISA 1:5000

Not yet tested in other applications

Storage

Storage*

-15°C to -25°C/1 year(Do not lower than -25°C)

Formulation

Liquid in PBS containing 50% glycerol, 0.5% BSA and 0.02% sodium azide.

Basic Information

Clonality

Polyclonal

Immunogen Information

Immunogen

The antiserum was produced against synthesized peptide derived from human OR2D2. AA range:231-280

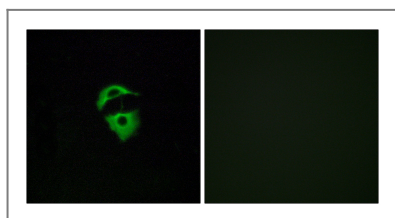
Specificity

Olfactory receptor 2D2 Polyclonal Antibody detects endogenous levels of Olfactory receptor 2D2 protein.

Target Information

| | | | |
|------------------------------|---|-------------------------|-------------------------|
| Gene name | OR2D2 | | |
| Protein Name | Olfactory receptor 2D2 | | |
| | Organism | Gene ID | UniProt ID |
| | Human | 120776; | Q9H210; |
| Cellular Localization | Cell membrane; Multi-pass membrane protein. | | |
| Function | Function:Odorant receptor .,similarity:Belongs to the G-protein coupled receptor 1 family., | | |

Validation Data



Immunofluorescence analysis of A549 cells, using OR2D2 Antibody. The picture on the right is blocked with the synthesized peptide.

Contact information

Orders: order.cn@immunoway.com
 Support: support.cn@immunoway.com
 Telephone: 400-8787-807(China)
 Website: <http://www.immunoway.com.cn>
 Address: 2200 Ringwood Ave San Jose, CA 95131 USA



Please scan the QR code to access additional product information:
Olfactory receptor 2D2 Rabbit pAb

For Research Use Only. Not for Use in Diagnostic Procedures.

[Antibody](#) | [ELISA Kits](#) | [Protein](#) | [Reagents](#)