

## PLC $\beta$ 2 Rabbit pAb

CatalogNo: YT3788

### Key Features

#### Host Species

- Rabbit

#### Reactivity

- Human, Mouse, Rat

#### Applications

- WB, IHC

#### MW

- 150kD (Observed)

#### Isotype

- IgG

### Recommended Dilution Ratios

WB 1:500-2000

IHC 1:50-300

### Storage

**Storage\*** -15°C to -25°C/1 year (Do not lower than -25°C)

**Formulation** Liquid in PBS containing 50% glycerol, 0.5% BSA and 0.02% sodium azide.

### Basic Information

**Clonality** Polyclonal

### Immunogen Information

**Immunogen** Synthesized peptide derived from the Internal region of human PLC  $\beta$ 2.

**Specificity** PLC  $\beta$ 2 Polyclonal Antibody detects endogenous levels of PLC  $\beta$ 2 protein.

### Target Information

**Gene name** PLCB2

**Protein Name** 1-phosphatidylinositol 4,5-bisphosphate phosphodiesterase beta-2

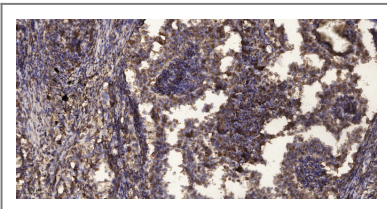
Organism	Gene ID	UniProt ID
Human	<a href="#">5330;</a>	<a href="#">Q00722;</a>
Mouse	<a href="#">18796;</a>	<a href="#">A3KGF7;</a>
Rat	<a href="#">85240;</a>	<a href="#">O89040;</a>

**Cellular Localization** intracellular,cytosol,

**Tissue specificity** Placenta,Spleen,Thymus,

**Function** Catalytic activity:1-phosphatidyl-1D-myo-inositol 4,5-bisphosphate + H(2)O = 1D-myo-inositol 1,4,5-trisphosphate + diacylglycerol.,cofactor:Binds 1 calcium ion per subunit.,Function:The production of the second messenger molecules diacylglycerol (DAG) and inositol 1,4,5-trisphosphate (IP3) is mediated by activated phosphatidylinositol-specific phospholipase C enzymes.,miscellaneous:The receptor-mediated activation of PLC-beta-2 is most effectively mediated by one G-protein alpha subunit, alpha-16.,similarity:Contains 1 C2 domain.,similarity:Contains 1 PI-PLC X-box domain.,similarity:Contains 1 PI-PLC Y-box domain.,subunit:Interacts with RAC1.,

## Validation Data



Immunohistochemical analysis of paraffin-embedded human Squamous cell carcinoma of lung. 1, Antibody was diluted at 1:200(4° overnight). 2, Tris-EDTA,pH9.0 was used for antigen retrieval. 3,Secondary antibody was diluted at 1:200(room temperature, 45min).

## Contact information

Orders: [order.cn@immunoway.com](mailto:order.cn@immunoway.com)  
Support: [support.cn@immunoway.com](mailto:support.cn@immunoway.com)  
Telephone: 400-8787-807(China)  
Website: <http://www.immunoway.com.cn>  
Address: 2200 Ringwood Ave San Jose, CA 95131 USA



Please scan the QR code to access additional product information:  
**PLC β2 Rabbit pAb**