

Rag B Rabbit pAb

CatalogNo: YT3991

Key Features

Host Species

- Rabbit

Reactivity

- Human, Mouse, Rat

Applications

- IHC, IF, ELISA

MW

- 43kD (Calculated)

Isotype

- IgG

Recommended Dilution Ratios

IHC 1:100-1:300

ELISA 1:40000

IF 1:50-200

Storage

Storage* -15°C to -25°C/1 year (Do not lower than -25°C)

Formulation Liquid in PBS containing 50% glycerol, 0.5% BSA and 0.02% sodium azide.

Basic Information

Clonality Polyclonal

Immunogen Information

Immunogen Synthesized peptide derived from Rag B . at AA range: 50-130

Specificity Rag B Polyclonal Antibody detects endogenous levels of Rag B protein.

Target Information

Gene name RRAGB

Protein Name Ras-related GTP-binding protein B

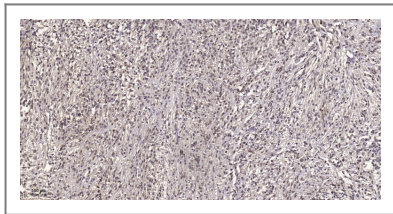
Organism	Gene ID	UniProt ID
Human	10325;	Q5VZM2;
Mouse	245670;	Q6NTA4;
Rat	117043;	Q63487;

Cellular Localization Cytoplasm . Lysosome .

Tissue specificity Adipose tissue,Brain,Skin,

Function Function:Involved in the RCC1/Ran-GTPase pathway. Has guanine nucleotide-binding activity but undetectable intrinsic GTPase activity.,similarity:Belongs to the GTR/RAG GTP-binding protein family.,subunit:The short isoform binds GTP (By similarity). Interacts with RRAGC and RRAGD.,

| Validation Data



Immunohistochemical analysis of paraffin-embedded human small intestinal carcinoma tissue. 1,primary Antibody was diluted at 1:200(4° overnight). 2, Sodium citrate pH 6.0 was used for antigen retrieval(>98°C,20min). 3,Secondary antibody was diluted at 1:200

| Contact information

Orders: order.cn@immunoway.com
Support: support.cn@immunoway.com
Telephone: 400-8787-807(China)
Website: <http://www.immunoway.com.cn>
Address: 2200 Ringwood Ave San Jose, CA 95131 USA



Please scan the QR code to access additional product information:
Rag B Rabbit pAb

For Research Use Only. Not for Use in Diagnostic Procedures.

[Antibody](#) | [ELISA Kits](#) | [Protein](#) | [Reagents](#)