

RAR β Rabbit pAb

CatalogNo: YT4008

Key Features

Host Species

- Rabbit

Reactivity

- Human, Mouse

Applications

- WB, IHC, IF, ELISA

MW

- 50kD (Observed)

Isotype

- IgG

Recommended Dilution Ratios

WB 1:500-1:2000**IHC 1:100-1:300****ELISA 1:20000****IF 1:50-200**

Storage

Storage*

-15°C to -25°C/1 year (Do not lower than -25°C)

Formulation

Liquid in PBS containing 50% glycerol, 0.5% BSA and 0.02% sodium azide.

Basic Information

Clonality

Polyclonal

Immunogen Information

Immunogen

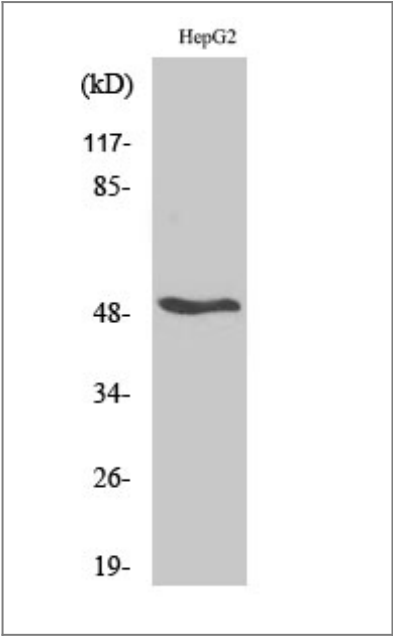
The antiserum was produced against synthesized peptide derived from human Retinoic Acid Receptor beta. AA range: 331-380

SpecificityRAR β Polyclonal Antibody detects endogenous levels of RAR β protein.

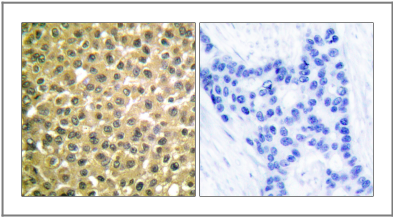
Target Information

| | | | |
|-----------------------|--|-------------------------|-------------------------|
| Gene name | RARB | | |
| Protein Name | Retinoic acid receptor beta | | |
| | Organism | Gene ID | UniProt ID |
| | Human | 5915; | P10826; |
| | Mouse | 218772; | P22605; |
| Cellular Localization | Nucleus . Cytoplasm .; [Isoform Beta-1]: Nucleus.; [Isoform Beta-2]: Nucleus.; [Isoform Beta-4]: Cytoplasm. | | |
| Tissue specificity | Expressed in aortic endothelial cells (at protein level). | | |
| Function | Domain:Composed of three domains: a modulating N-terminal domain, a DNA-binding domain and a C-terminal steroid-binding domain.,Function:This is a receptor for retinoic acid. This metabolite has profound effects on vertebrate development. Retinoic acid is a morphogen and is a powerful teratogen. This receptor controls cell function by directly regulating gene expression.,similarity:Belongs to the nuclear hormone receptor family.,similarity:Belongs to the nuclear hormone receptor family. NR1 subfamily.,similarity:Contains 1 nuclear receptor DNA-binding domain., | | |

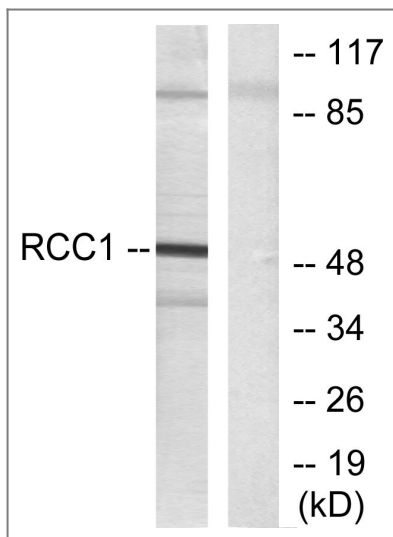
Validation Data



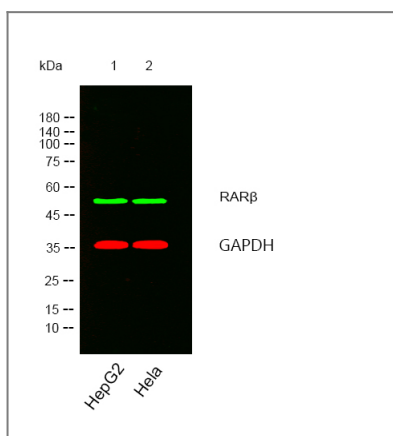
Western Blot analysis of various cells using RARβ Polyclonal Antibody



Immunohistochemistry analysis of paraffin-embedded human breast carcinoma tissue, using Retinoic Acid Receptor beta Antibody. The picture on the right is blocked with the synthesized peptide.



Western blot analysis of lysates from HepG2 cells, using Retinoic Acid Receptor beta Antibody. The lane on the right is blocked with the synthesized peptide.



Western blot analysis of lysates from HepG2, Hela cells, (Green) primary antibody was diluted at 1:1000, 4° over night, secondary antibody was diluted at 1:10000, 37° 1 hour. (Red) loading control antibody was diluted at 1:5000 as loading control, 4° over night, secondary antibody was diluted at 1:10000, 37° 1 hour.

Contact information

Orders: order.cn@immunoway.com
 Support: support.cn@immunoway.com
 Telephone: 400-8787-807(China)
 Website: <http://www.immunoway.com.cn>
 Address: 2200 Ringwood Ave San Jose, CA 95131 USA



Please scan the QR code to access additional product information:
RARβ Rabbit pAb

For Research Use Only. Not for Use in Diagnostic Procedures.

[Antibody](#) | [ELISA Kits](#) | [Protein](#) | [Reagents](#)