

## Repac Rabbit pAb

CatalogNo: YT4051

### Key Features

#### Host Species

- Rabbit

#### Reactivity

- Human, Mouse, Rat

#### Applications

- WB, IHC

#### MW

- 60kD (Observed)

#### Isotype

- IgG

### Recommended Dilution Ratios

WB 1:500-2000

IHC 1:50-300

### Storage

**Storage\*** -15°C to -25°C/1 year (Do not lower than -25°C)

**Formulation** Liquid in PBS containing 50% glycerol, 0.5% BSA and 0.02% sodium azide.

### Basic Information

**Clonality** Polyclonal

### Immunogen Information

**Immunogen** The antiserum was produced against synthesized peptide derived from human RAPGEF5. AA range:431-480

**Specificity** Repac Polyclonal Antibody detects endogenous levels of Repac protein.

### Target Information

**Gene name** RAPGEF5

**Protein Name** Rap guanine nucleotide exchange factor 5

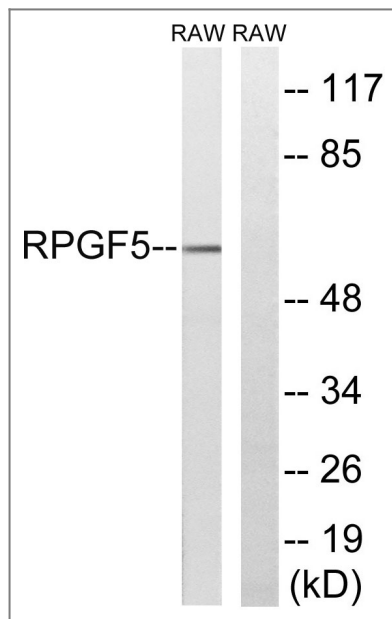
| Organism | Gene ID                  | UniProt ID               |
|----------|--------------------------|--------------------------|
| Human    | <a href="#">9771</a> ;   | <a href="#">Q92565</a> ; |
| Mouse    | <a href="#">217944</a> ; | <a href="#">Q8C0Q9</a> ; |
| Rat      | <a href="#">362799</a> ; | <a href="#">P83900</a> ; |

**Cellular Localization** Nucleus.

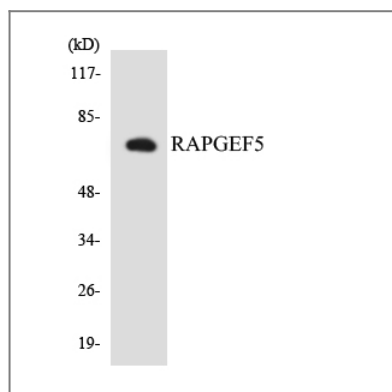
**Tissue specificity** Widely expressed with highest levels in brain.

**Function** Function:Guanine nucleotide exchange factor (GEF) for RAP1A, RAP2A and MRAS/M-Ras-GTP. Its association with MRAS inhibits Rap1 activation.,similarity:Contains 1 N-terminal Ras-GEF domain.,similarity:Contains 1 Ras-GEF domain.,tissue specificity:Widely expressed with highest levels in brain.,

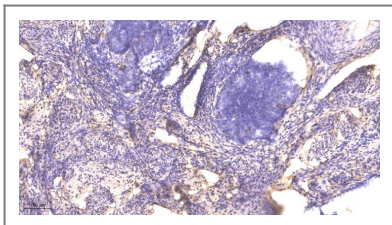
## Validation Data



Western blot analysis of lysates from RAW264.7 cells, using RAPGEF5 Antibody. The lane on the right is blocked with the synthesized peptide.



Western blot analysis of the lysates from COLO205 cells using RAPGEF5 antibody.



Immunohistochemical analysis of paraffin-embedded human cervical carcinoma. 1, Antibody was diluted at 1:200(4° overnight). 2, Tris-EDTA,pH9.0 was used for antigen retrieval. 3,Secondary antibody was diluted at 1:200(room temperature, 45min).

## | Contact information

Orders: [order.cn@immunoway.com](mailto:order.cn@immunoway.com)  
Support: [support.cn@immunoway.com](mailto:support.cn@immunoway.com)  
Telephone: 400-8787-807(China)  
Website: <http://www.immunoway.com.cn>  
Address: 2200 Ringwood Ave San Jose, CA 95131 USA



Please scan the QR code to access additional product information:  
**Repac Rabbit pAb**

---

For Research Use Only. Not for Use in Diagnostic Procedures.

[Antibody](#) | [ELISA Kits](#) | [Protein](#) | [Reagents](#)