

Rsk-1/2/3/4 Rabbit pAb

CatalogNo: YT4183

Key Features

Host Species

- Rabbit

Reactivity

- Human, Mouse

Applications

- WB, ELISA

MW

- 90kD (Observed)

Isotype

- IgG

Recommended Dilution Ratios

WB 1:500-1:2000

ELISA 1:20000

Not yet tested in other applications.

Storage

Storage* -15°C to -25°C/1 year (Do not lower than -25°C)

Formulation Liquid in PBS containing 50% glycerol, 0.5% BSA and 0.02% sodium azide.

Basic Information

Clonality Polyclonal

Immunogen Information

Immunogen The antiserum was produced against synthesized peptide derived from human RSK1/2/3/4. AA range:191-240

Specificity Rsk-1/2/3/4 Polyclonal Antibody detects endogenous levels of Rsk-1/2/3/4 protein.

Target Information

Gene name RPS6KA1

Protein Name Ribosomal protein S6 kinase alpha-1

Organism

Gene ID

UniProt ID

Human [6195](#); [6197](#); [6196](#); [27330](#);

[Q15418](#); [P51812](#); [Q15349](#); [Q9UK32](#);

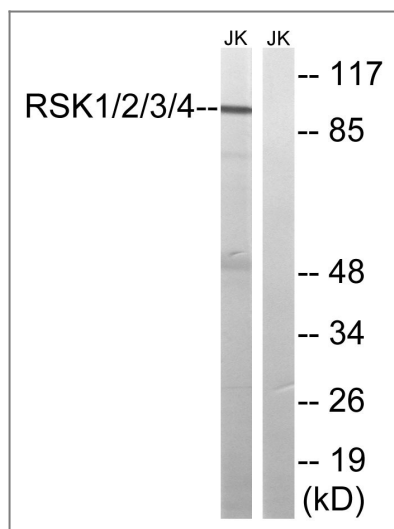
Mouse [110651](#); [20112](#); [67071](#);

Cellular Localization Nucleus. Cytoplasm.

Tissue specificity Colon, Epithelium,

Function Catalytic activity: ATP + a protein = ADP + a phosphoprotein., Caution: The sequence shown here is derived from an Ensembl automatic analysis pipeline and should be considered as preliminary data., cofactor: Magnesium., enzyme regulation: Activated by multiple phosphorylations on threonine and serine residues., Function: Serine/threonine kinase that may play a role in mediating the growth-factor and stress induced activation of the transcription factor CREB., PTM: Autophosphorylated on Ser-380, as part of the activation process., similarity: Belongs to the protein kinase superfamily., similarity: Belongs to the protein kinase superfamily. AGC Ser/Thr protein kinase family. S6 kinase subfamily., similarity: Contains 1 AGC-kinase C-terminal domain., similarity: Contains 2 protein kinase domains., subunit: Forms a complex with either ERK1 or ERK2 in quiescent cells. Transiently dissociates following mitogenic stimulation.,

Validation Data



Western blot analysis of lysates from Jurkat cells, using RSK1/2/3/4 Antibody. The lane on the right is blocked with the synthesized peptide.

Contact information

Orders: order.cn@immunoway.com
Support: support.cn@immunoway.com
Telephone: 400-8787-807(China)
Website: http://www.immunoway.com.cn
Address: 2200 Ringwood Ave San Jose, CA 95131 USA



Please scan the QR code
to access additional
product information:
**Rsk-1/2/3/4 Rabbit
pAb**

For Research Use Only. Not for Use in Diagnostic Procedures.

[Antibody](#) | [ELISA Kits](#) | [Protein](#) | [Reagents](#)