

## RXR $\gamma$ Rabbit pAb

CatalogNo: YT4195

### Key Features

**Host Species**

- Rabbit

**Reactivity**

- Human, Mouse

**Applications**

- WB, IHC, IF, ELISA

**MW**

- 50kD (Observed)

**Isotype**

- IgG

### Recommended Dilution Ratios

**WB 1:500-1:2000****IHC 1:100-1:300****IF 1:200-1:1000****ELISA 1:10000****Not yet tested in other applications.**

### Storage

**Storage\*** -15°C to -25°C/1 year (Do not lower than -25°C)**Formulation** Liquid in PBS containing 50% glycerol, 0.5% BSA and 0.02% sodium azide.

### Basic Information

**Clonality** Polyclonal

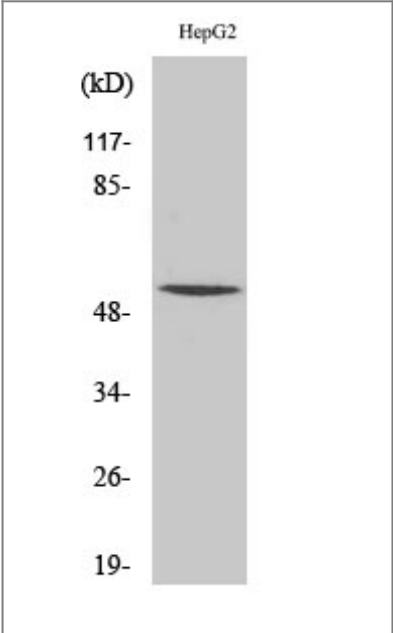
### Immunogen Information

**Immunogen** The antiserum was produced against synthesized peptide derived from human Retinoid X Receptor gamma. AA range: 171-220**Specificity** RXR $\gamma$  Polyclonal Antibody detects endogenous levels of RXR $\gamma$  protein.

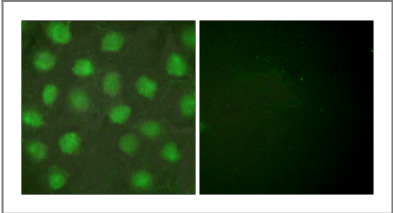
## | Target Information

Gene name	RXRG		
Protein Name	Retinoic acid receptor RXR-gamma		
	Organism	Gene ID	UniProt ID
	Human	<a href="#">6258</a> ;	<a href="#">P48443</a> ;
	Mouse	<a href="#">20183</a> ;	<a href="#">P28705</a> ;
Cellular Localization	Nucleus . Cytoplasm .		
Tissue specificity	Expressed in aortic endothelial cells (at protein level).		
Function	Caution:The sequence shown here is derived from an Ensembl automatic analysis pipeline and should be considered as preliminary data.,Domain:Composed of three domains: a modulating N-terminal domain, a DNA-binding domain and a C-terminal steroid-binding domain.,Function:Nuclear hormone receptor. Involved in the retinoic acid response pathway. Binds 9-cis retinoic acid (9C-RA).,similarity:Belongs to the nuclear hormone receptor family. NR2 subfamily.,similarity:Contains 1 nuclear receptor DNA-binding domain.,		

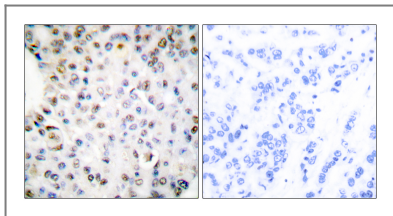
## | Validation Data



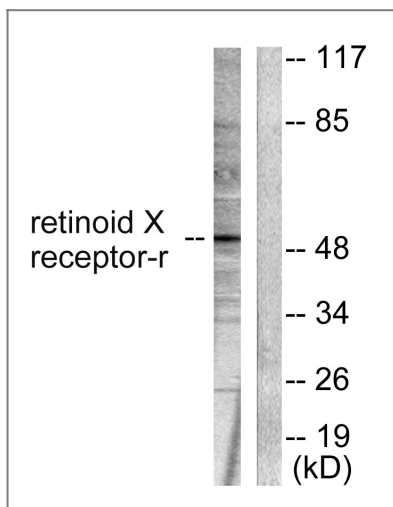
Western Blot analysis of HepG2 cells using RXRγ Polyclonal Antibody cells nucleus extracted by Minute TM Cytoplasmic and Nuclear Fractionation kit (SC-003, Invent biotech, MN, USA).



Immunofluorescence analysis of HUVEC cells, using Retinoid X Receptor gamma Antibody. The picture on the right is blocked with the synthesized peptide.



Immunohistochemistry analysis of paraffin-embedded human breast carcinoma tissue, using Retinoid X Receptor gamma Antibody. The picture on the right is blocked with the synthesized peptide.



Western blot analysis of lysates from HepG2 cells, using Retinoid X Receptor gamma Antibody. The lane on the right is blocked with the synthesized peptide.

## Contact information

Orders: [order.cn@immunoway.com](mailto:order.cn@immunoway.com)  
 Support: [support.cn@immunoway.com](mailto:support.cn@immunoway.com)  
 Telephone: 400-8787-807(China)  
 Website: <http://www.immunoway.com.cn>  
 Address: 2200 Ringwood Ave San Jose, CA 95131 USA



Please scan the QR code to access additional product information:  
**RXRγ Rabbit pAb**

For Research Use Only. Not for Use in Diagnostic Procedures.

[Antibody](#) | [ELISA Kits](#) | [Protein](#) | [Reagents](#)