

TCF-3 Rabbit pAb

CatalogNo: YT4579

Key Features

Host Species

- Rabbit

Reactivity

- Human, Mouse, Rat

Applications

- WB, IHC, IF, ELISA

MW

- 68kD (Observed)

Isotype

- IgG

Recommended Dilution Ratios

WB 1:500-1:2000

IHC 1:100-1:300

ELISA 1:20000

IF 1:50-200

Storage

Storage*

-15°C to -25°C/1 year (Do not lower than -25°C)

Formulation

Liquid in PBS containing 50% glycerol, 0.5% BSA and 0.02% sodium azide.

Basic Information

Clonality

Polyclonal

Immunogen Information

Immunogen

The antiserum was produced against synthesized peptide derived from human TCF3. AA range: 571-620

Specificity

TCF-3 Polyclonal Antibody detects endogenous levels of TCF-3 protein.

Target Information

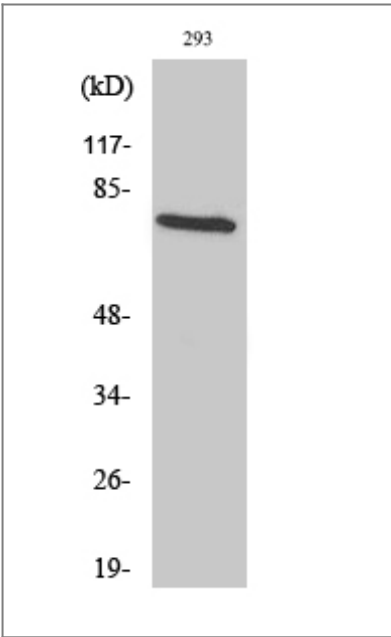
Gene name	TCF3		
Protein Name	Transcription factor E2-alpha		
	Organism	Gene ID	UniProt ID
	Human	6929;	P15923;
	Mouse	21423;	P15806;
	Rat	171046;	P21677;

Cellular Localization Nucleus .

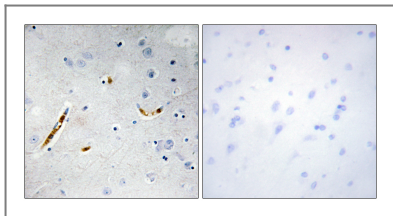
Tissue specificity Lymphoma,Muscle,PCR rescued clones,

Function Disease:Chromosomal aberrations involving TCF3 are cause of forms of pre-B-cell acute lymphoblastic leukemia (B-ALL). Translocation t(1;19)(q23;p13.3) with PBX1; Translocation t(17;19)(q22;p13.3) with HLF. Inversion inv(19)(p13;q13) with TFPT.,Function:Heterodimers between TCF3 and tissue-specific basic helix-loop-helix (bHLH) proteins play major roles in determining tissue-specific cell fate during embryogenesis, like muscle or early B-cell differentiation. Dimers bind DNA on E-box motifs: 5'-CANNTG-3'. Binds to the kappa-E2 site in the kappa immunoglobulin gene enhancer.,PTM:Phosphorylated following NGF stimulation.,similarity:Contains 1 basic helix-loop-helix (bHLH) domain.,subunit:Efficient DNA binding requires dimerization with another bHLH protein. Forms a heterodimer with ASH1 and TWIST2. Isoform E12 interacts with GRIPE and FIGLA (By similarity). Interacts with PTF1A and TGFB1I1. Component of a nuclear TAL-1 complex composed at least of CBFA2T3, LDB1, TAL1 and TCF3 (By similarity). Interacts with UBE2L.,

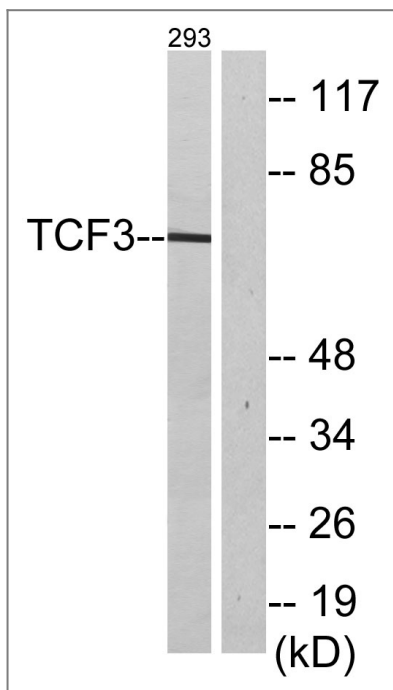
Validation Data



Western Blot analysis of various cells using TCF-3 Polyclonal Antibody



Immunohistochemistry analysis of paraffin-embedded human brain tissue, using TCF3 Antibody. The picture on the right is blocked with the synthesized peptide.



Western blot analysis of lysates from 293 cells, using TCF3 Antibody. The lane on the right is blocked with the synthesized peptide.

Contact information

Orders: order.cn@immunoway.com
 Support: support.cn@immunoway.com
 Telephone: 400-8787-807(China)
 Website: <http://www.immunoway.com.cn>
 Address: 2200 Ringwood Ave San Jose, CA 95131 USA



Please scan the QR code to access additional product information:
TCF-3 Rabbit pAb

For Research Use Only. Not for Use in Diagnostic Procedures.

[Antibody](#) | [ELISA Kits](#) | [Protein](#) | [Reagents](#)