

## TRAF3 Rabbit pAb

CatalogNo: YT4718

### Key Features

#### Host Species

- Rabbit

#### Reactivity

- Human, Mouse

#### Applications

- WB, ELISA

#### MW

- 64kD (Observed)

#### Isotype

- IgG

### Recommended Dilution Ratios

**WB 1:500-1:2000**

**ELISA 1:20000**

**Not yet tested in other applications.**

### Storage

**Storage\*** -15°C to -25°C/1 year (Do not lower than -25°C)

**Formulation** Liquid in PBS containing 50% glycerol, 0.5% BSA and 0.02% sodium azide.

### Basic Information

**Clonality** Polyclonal

### Immunogen Information

**Immunogen** The antiserum was produced against synthesized peptide derived from human TRAF3. AA range: 240-289

**Specificity** TRAF3 Polyclonal Antibody detects endogenous levels of TRAF3 protein.

### Target Information

**Gene name** TRAF3

**Protein Name** TNF receptor-associated factor 3

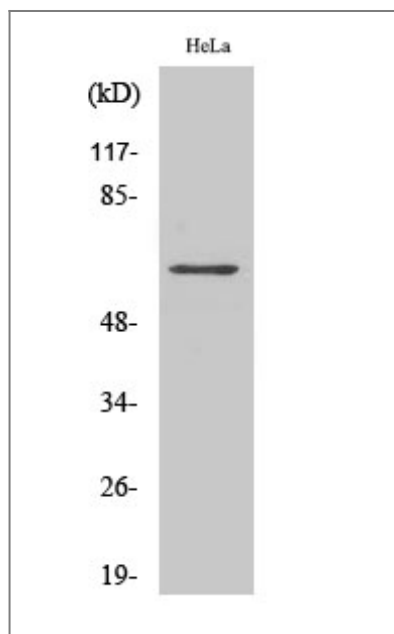
Organism	Gene ID	UniProt ID
Human	<a href="#">7187;</a>	<a href="#">Q13114;</a>
Mouse	<a href="#">22031;</a>	<a href="#">Q60803;</a>

**Cellular Localization** Cytoplasm . Endosome . Mitochondrion . Undergoes endocytosis together with TLR4 upon LPS signaling (By similarity). Co-localized to mitochondria with TRIM35 (PubMed:32562145).

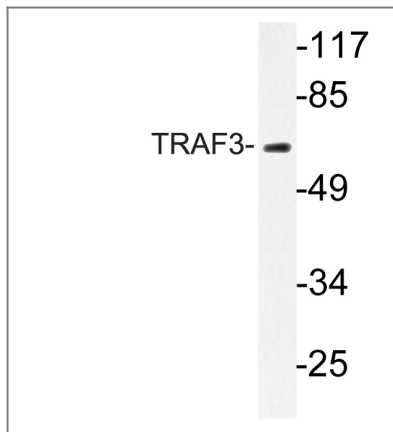
**Tissue specificity** Brain,Fetal brain,Lymphoma,T-cell,

**Function** Caution:The sequence shown here is derived from an Ensembl automatic analysis pipeline and should be considered as preliminary data.,Domain:The MATH/TRAF domain binds to receptor cytoplasmic domains.,Function:Adapter protein and signal transducer that links members of the tumor necrosis factor receptor family to different signaling pathways by association with the receptor cytoplasmic domain and kinases. Seems to be involved in activation of NF-kappa-B and JNK and in apoptosis. Is regulated by TANK/ITRAF which competes with TNFRSF5/CD40 for binding. Seems to play a role T-cell dependent immune responses.,similarity:Contains 1 MATH domain.,similarity:Contains 1 RING-type zinc finger.,similarity:Contains 2 TRAF-type zinc fingers.,subunit:Homotrimer (Probable). Heteromer with TRAF5 (By similarity). Binds to TNFRSF5/CD40. Associates with LTBR/TNFRSF3, TNFRSF4, TNFRSF8/CD30, TNFRSF17/BCMA and EDAR, MAP3K5, MAP3K14, and TRAF-interacting protein TRIP and TRAF and TNF receptor associated protein TTRAP. Binds to TANK/ITRAF and TRAF3IP1. Interacts with TICAM1 (By similarity). Interacts with OTUD5.,

## Validation Data



Western Blot analysis of COLO205 cells using TRAF3 Polyclonal Antibody. Secondary antibody(catalog#:RS0002) was diluted at 1:20000



Western blot analysis of lysate from HeLa cells, using TRAF3 antibody.

## Contact information

Orders: [order.cn@immunoway.com](mailto:order.cn@immunoway.com)  
Support: [support.cn@immunoway.com](mailto:support.cn@immunoway.com)  
Telephone: 400-8787-807(China)  
Website: <http://www.immunoway.com.cn>  
Address: 2200 Ringwood Ave San Jose, CA 95131 USA



Please scan the QR code  
to access additional  
product information:  
**TRAF3 Rabbit pAb**

For Research Use Only. Not for Use in Diagnostic Procedures.

[Antibody](#) | [ELISA Kits](#) | [Protein](#) | [Reagents](#)