

## V-ATPase C2 Rabbit pAb

CatalogNo: YT4859

### Key Features

#### Host Species

- Rabbit

#### Reactivity

- Human,Rat,Mouse,

#### Applications

- WB,ELISA

#### MW

- 48kD (Observed)

#### Isotype

- IgG

### Recommended Dilution Ratios

**WB 1:500-1:2000**

**ELISA 1:20000**

**Not yet tested in other applications.**

### Storage

#### Storage\*

-15°C to -25°C/1 year(Do not lower than -25°C)

#### Formulation

Liquid in PBS containing 50% glycerol, 0.5% BSA and 0.02% sodium azide.

### Basic Information

#### Clonality

Polyclonal

### Immunogen Information

#### Immunogen

The antiserum was produced against synthesized peptide derived from human ATP6V1C2. AA range:121-170

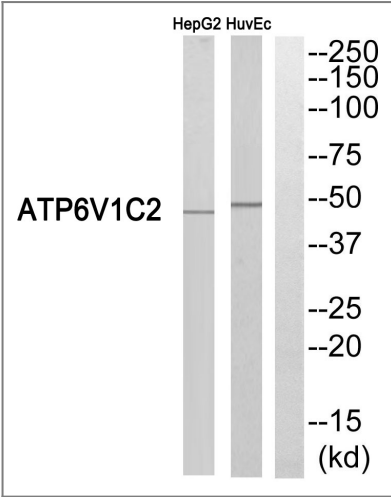
#### Specificity

V-ATPase C2 Polyclonal Antibody detects endogenous levels of V-ATPase C2 protein.

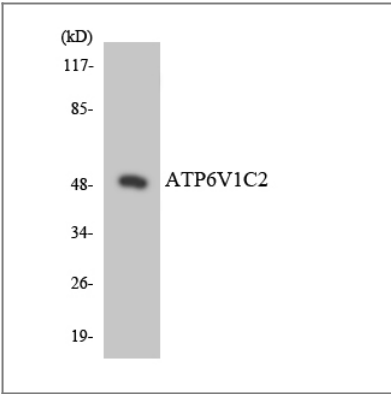
### Target Information

Gene name	ATP6V1C2		
Protein Name	V-type proton ATPase subunit C 2		
	Organism	Gene ID	UniProt ID
	Human	<a href="#">245973</a> ;	<a href="#">Q8NEY4</a> ;
	Mouse		<a href="#">Q99L60</a> ;
Cellular Localization	vacuolar proton-transporting V-type ATPase, V1 domain,lysosomal membrane,cytosol,proton-transporting V-type ATPase, V1 domain,extracellular exosome,		
Tissue specificity	Kidney and placenta.		
Function	Function:Subunit of the peripheral V1 complex of vacuolar ATPase. Subunit C is necessary for the assembly of the catalytic sector of the enzyme and is likely to have a specific function in its catalytic activity. V-ATPase is responsible for acidifying a variety of intracellular compartments in eukaryotic cells.,similarity:Belongs to the V-ATPase C subunit family.,subunit:V-ATPase is an heteromultimeric enzyme composed of a peripheral catalytic V1 complex (components A to H) attached to an integral membrane V0 proton pore complex (components: a, c, c', c'' and d).,tissue specificity:Kidney and placenta.,		

Validation Data



Western blot analysis of ATP6V1C2 Antibody. The lane on the right is blocked with the ATP6V1C2 peptide.



Western blot analysis of the lysates from HT-29 cells using ATP6V1C2 antibody.

## | Contact information

Orders: order.cn@immunoway.com  
Support: support.cn@immunoway.com  
Telephone: 400-8787-807(China)  
Website: <http://www.immunoway.com.cn>  
Address: 2200 Ringwood Ave San Jose, CA 95131 USA



Please scan the QR code  
to access additional  
product information:  
**V-ATPase C2 Rabbit  
pAb**

---

For Research Use Only. Not for Use in Diagnostic Procedures.

[Antibody](#) | [ELISA Kits](#) | [Protein](#) | [Reagents](#)