

AR- β 2 Rabbit pAb

CatalogNo: YT5048

Key Features

Host Species

- Rabbit

Reactivity

- Human, Mouse, Rat

Applications

- WB, ELISA

MW

- 46kD (Observed)

Isotype

- IgG

Recommended Dilution Ratios

WB 1:500-1:2000**ELISA 1:5000****Not yet tested in other applications.**

Storage

Storage*

-15°C to -25°C/1 year (Do not lower than -25°C)

Formulation

Liquid in PBS containing 50% glycerol, 0.5% BSA and 0.02% sodium azide.

Basic Information

Clonality

Polyclonal

Immunogen Information

ImmunogenSynthesized peptide derived from AR- β 2 . at AA range: 300-380**Specificity**AR- β 2 Polyclonal Antibody detects endogenous levels of AR- β 2 protein.

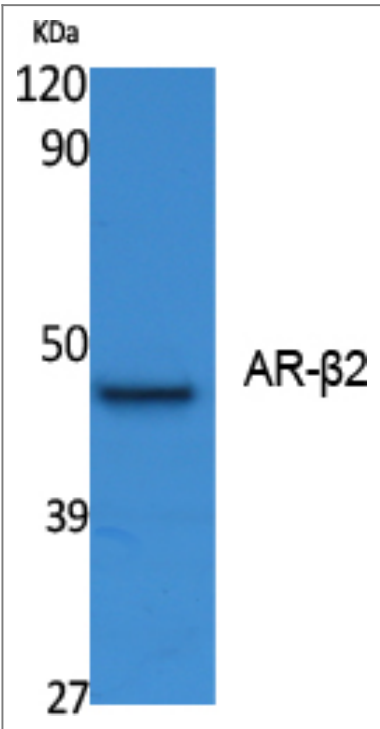
Target Information

Gene name

ADRB2

Protein Name	Beta-2 adrenergic receptor		
	Organism	Gene ID	UniProt ID
	Human	154;	P07550;
	Mouse	11555;	P18762;
	Rat		P10608;
Cellular Localization	Cell membrane ; Multi-pass membrane protein . Early endosome . Golgi apparatus . Colocalizes with VHL at the cell membrane (PubMed:19584355). Activated receptors are internalized into endosomes prior to their degradation in lysosomes (PubMed:20559325). Activated receptors are also detected within the Golgi apparatus (PubMed:27481942). .		
Tissue specificity	Blood,Brain,Fetal brain,Heart,Leukocyte,Prostate,Thyroid,		
Function	Disease:Polymorphic forms of ADRB2 could impart some form of nocturnal asthma.,Function:Beta-adrenergic receptors mediate the catecholamine-induced activation of adenylate cyclase through the action of G proteins. The beta-2-adrenergic receptor binds epinephrine with an approximately 30-fold greater affinity than it does norepinephrine.,PTM:Palmitoylated; may reduce accessibility of Ser-345 and Ser-346 by anchoring Cys-341 to the plasma membrane. Agonist stimulation promotes depalmitoylation and further allows Ser-345 and Ser-346 phosphorylation.,PTM:Phosphorylated by PKA and BARK upon agonist stimulation, which mediates homologous desensitization of the receptor. PKA-mediated phosphorylation seems to facilitate phosphorylation by BARK. Phosphorylated upon DNA damage, probably by ATM or ATR.,PTM:Phosphorylation of Tyr-141 is induced by insulin and leads to supersensitization of the receptor.,similarity:Belongs to the G-protein coupled receptor 1 family.,subunit:Binds SLC9A3R1 and GPRASP1.,		

Validation Data



Western Blot analysis of extracts from K562 cells, using AR-β2 Polyclonal Antibody. Secondary antibody(catalog#:RS0002) was diluted at 1:20000

| Contact information

Orders: order.cn@immunoway.com
Support: support.cn@immunoway.com
Telephone: 400-8787-807(China)
Website: <http://www.immunoway.com.cn>
Address: 2200 Ringwood Ave San Jose, CA 95131 USA



Please scan the QR code
to access additional
product information:
AR- β 2 Rabbit pAb

For Research Use Only. Not for Use in Diagnostic Procedures.

[Antibody](#) | [ELISA Kits](#) | [Protein](#) | [Reagents](#)