

EGF Rabbit pAb

CatalogNo: YT5880

Key Features

Host Species

- Rabbit

Reactivity

- Human, Mouse,

Applications

- WB, IHC, IF, ELISA

MW

- 130kD (Observed)

Isotype

- IgG

Recommended Dilution Ratios

WB 1:500-2000

IHC 1:500-200

ELISA 1:10000-20000

IF 1:50-200

Storage

Storage*

-15°C to -25°C/1 year (Do not lower than -25°C)

Formulation

Liquid in PBS containing 50% glycerol, 0.5% BSA and 0.02% sodium azide.

Basic Information

Clonality

Polyclonal

Immunogen Information

Immunogen

Synthetic peptide from human protein at AA range: 1000-1060

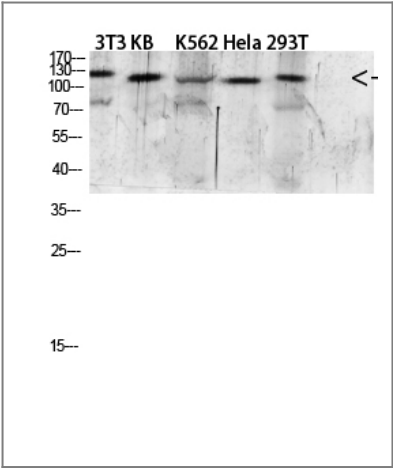
Specificity

The antibody detects endogenous EGF

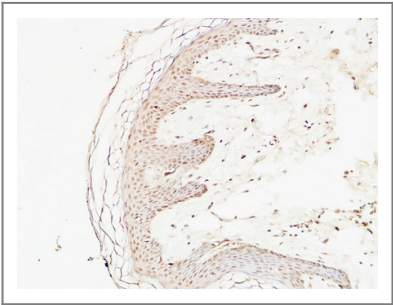
Target Information

Gene name	EGF		
Protein Name	Pro-epidermal growth factor (EGF) [Cleaved into: Epidermal growth factor (Urogastrone)]		
	Organism	Gene ID	UniProt ID
	Human	1950 ;	P01133 ;
	Mouse	13645 ;	P01132 ;
Cellular Localization	Membrane; Single-pass type I membrane protein.		
Tissue specificity	Expressed in kidney, salivary gland, cerebrum and prostate.		
Function	Disease:Defects in EGF are the cause of hypomagnesemia type 4 (HOMG4) [MIM:611718]; also known as renal hypomagnesemia normocalciuric. HOMG4 is a disorder characterized by massive renal hypomagnesemia and normal levels of serum calcium and calcium excretion. Clinical features include seizures, mild-to mederate psychomotor retardation, and brisk tendon reflexes.,Function:EGF stimulates the growth of various epidermal and epithelial tissues in vivo and in vitro and of some fibroblasts in cell culture. Magnesiotropic hormone that stimulates magnesium reabsorption in the renal distal convoluted tubule via engagement of EGFR and activation of the magnesium channel TRPM6.,online information:Epidermal growth factor entry,similarity:Contains 9 EGF-like domains.,similarity:Contains 9 LDL-receptor class B repeats.,tissue specificity:Expressed in kidney, salivary gland, cerebrum and prostate.,		

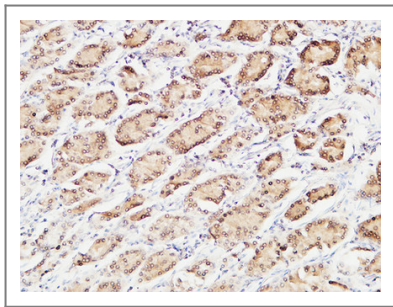
Validation Data



Western blot analysis of 293T mouse-kidney lysate, antibody was diluted at 2000. Secondary antibody(catalog#:RS0002) was diluted at 1:20000



Immunohistochemical analysis of paraffin-embedded Human skin. 1, Antibody was diluted at 1:200(4° overnight). 2, High-pressure and temperature EDTA, pH8.0 was used for antigen retrieval. 3,Secondary antibody was diluted at 1:200(room temperature, 30min).



Immunohistochemical analysis of paraffin-embedded Human gastric cancer. 1, Antibody was diluted at 1:100(4° overnight). 2, High-pressure and temperature EDTA, pH8.0 was used for antigen retrieval. 3,Secondary antibody was diluted at 1:200(room temperature, 30min).

Contact information

Orders: order.cn@immunoway.com
Support: support.cn@immunoway.com
Telephone: 400-8787-807(China)
Website: <http://www.immunoway.com.cn>
Address: 2200 Ringwood Ave San Jose, CA 95131 USA



Please scan the QR code
to access additional
product information:
EGF Rabbit pAb

For Research Use Only. Not for Use in Diagnostic Procedures.

[Antibody](#) | [ELISA Kits](#) | [Protein](#) | [Reagents](#)