

## NT-3 Rabbit pAb

CatalogNo: YT5911

Orthogonal Validated 

### Key Features

#### Host Species

- Rabbit

#### Reactivity

- Human, Mouse, Rat

#### Applications

- IHC, IF, ELISA

#### Isotype

- IgG

### Recommended Dilution Ratios

IHC 1:50-200

ELISA 1:10000-20000

IF 1:50-200

### Storage

**Storage\*** -15°C to -25°C/1 year (Do not lower than -25°C)**Formulation** Liquid in PBS containing 50% glycerol, 0.5% BSA and 0.02% sodium azide.

### Basic Information

**Clonality** Polyclonal

### Immunogen Information

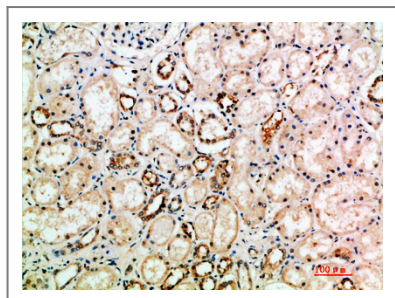
**Immunogen** Synthetic peptide from human protein at AA range: 180-230**Specificity** The antibody detects endogenous NT-3

### Target Information

**Gene name** NTF3

<b>Protein Name</b>	Neurotrophin-3 (NT-3) (HDNF) (Nerve growth factor 2) (NGF-2) (Neurotrophic factor)		
	<b>Organism</b>	<b>Gene ID</b>	<b>UniProt ID</b>
	Human	<a href="#">4908;</a>	<a href="#">P20783;</a>
	Mouse	<a href="#">18205;</a>	<a href="#">P20181;</a>
	Rat		<a href="#">P18280;</a>
<b>Cellular Localization</b>	Secreted.		
<b>Tissue specificity</b>	Brain and peripheral tissues.		
<b>Function</b>	Function:Seems to promotes the survival of visceral and proprioceptive sensory neurons.,polymorphism:Variant Glu-76 (frequently reported as Glu-63) was thought to be associated with severe forms of schizophrenia. This does not seem to be the case.,similarity:Belongs to the NGF-beta family.,tissue specificity:Brain and peripheral tissues.,		

## Validation Data



Immunohistochemical analysis of paraffin-embedded human-kidney, antibody was diluted at 1:200

## Contact information

Orders: [order.cn@immunoway.com](mailto:order.cn@immunoway.com)  
 Support: [support.cn@immunoway.com](mailto:support.cn@immunoway.com)  
 Telephone: 400-8787-807(China)  
 Website: <http://www.immunoway.com.cn>  
 Address: 2200 Ringwood Ave San Jose, CA 95131 USA



Please scan the QR code to access additional product information:  
**NT-3 Rabbit pAb**