

CD80 Rabbit pAb

CatalogNo: YT6014

| Key Features

Host Species

- Rabbit

Reactivity

- Human, Mouse

Applications

- IHC, IF, ELISA

Isotype

- IgG

| Recommended Dilution Ratios

IHC 1:50-200

ELISA 1:10000-20000

IF 1:50-200

| Storage

Storage* -15°C to -25°C/1 year (Do not lower than -25°C)

Formulation Liquid in PBS containing 50% glycerol, 0.5% BSA and 0.02% sodium azide.

| Basic Information

Clonality Polyclonal

| Immunogen Information

Immunogen Synthetic peptide from human protein at AA range: 100-160

Specificity The antibody detects endogenous CD80

| Target Information

Gene name CD80 CD28LG CD28LG1 LAB7

Protein Name T-lymphocyte activation antigen CD80 (Activation B7-1 antigen) (BB1) (CTLA-4 counter-receptor B7.1) (B7) (CD antigen CD80)

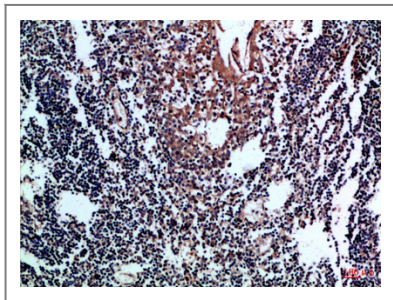
| Organism | Gene ID | UniProt ID |
|----------|-------------------------|--------------------------|
| Human | 941 ; | P33681 ; |
| Mouse | 12519 ; | Q00609 ; |

Cellular Localization Membrane; Single-pass type I membrane protein.

Tissue specificity Expressed on activated B-cells, macrophages and dendritic cells.

Function Function:Involved in the costimulatory signal essential for T-lymphocyte activation. T-cell proliferation and cytokine production is induced by the binding of CD28 or CTLA-4 to this receptor.,similarity:Contains 1 Ig-like C2-type (immunoglobulin-like) domain.,similarity:Contains 1 Ig-like V-type (immunoglobulin-like) domain.,subunit:Interacts with adenovirus subgroup B fiber proteins and acts as a receptor for these viruses.,tissue specificity:Expressed on activated B-cells, macrophages and dendritic cells.,

Validation Data



Immunohistochemical analysis of paraffin-embedded Human-tonsil, antibody was diluted at 1:100

Contact information

Orders: order.cn@immunoway.com
Support: support.cn@immunoway.com
Telephone: 400-8787-807(China)
Website: <http://www.immunoway.com.cn>
Address: 2200 Ringwood Ave San Jose, CA 95131 USA



Please scan the QR code to access additional product information:

CD80 Rabbit pAb