

## Glypican-2 Rabbit pAb

CatalogNo: YT6217

### | Key Features

#### Host Species

- Rabbit

#### Reactivity

- Human,Rat,Mouse,

#### Applications

- IHC,IF,WB

#### MW

- 65kD (Observed)

#### Isotype

- IgG

### | Recommended Dilution Ratios

IHC 1:50-200

WB 1:500-2000

IF 1:50-200

### | Storage

#### Storage\*

-15°C to -25°C/1 year(Do not lower than -25°C)

#### Formulation

Liquid in PBS containing 50% glycerol, 0.5% BSA and 0.02% sodium azide.

### | Basic Information

#### Clonality

Polyclonal

### | Immunogen Information

#### Immunogen

Synthesized peptide derived from human Glypican-2

#### Specificity

This antibody detects endogenous levels of human Glypican-2

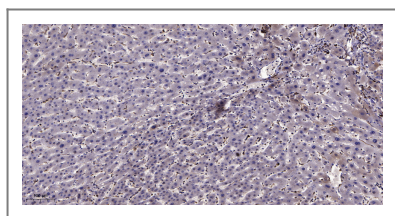
### | Target Information

#### Gene name

GPC2

<b>Protein Name</b>	Glypican-2		
	<b>Organism</b>	<b>Gene ID</b>	<b>UniProt ID</b>
	Human	<a href="#">221914</a> ;	<a href="#">Q8N158</a> ;
<b>Cellular Localization</b>	Cell membrane ; Lipid-anchor, GPI-anchor ; Extracellular side .; [Secreted glypican-2]: Secreted, extracellular space .		
<b>Tissue specificity</b>	Brain,		
<b>Function</b>	Function:Cell surface proteoglycan that bears heparan sulfate. May fulfill a function related to the motile behaviors of developing neurons.,similarity:Belongs to the glypican family.,		

## Validation Data



Immunohistochemical analysis of paraffin-embedded human liver cancer. 1, Antibody was diluted at 1:200(4° overnight). 2, Tris-EDTA,pH9.0 was used for antigen retrieval. 3,Secondary antibody was diluted at 1:200(room temperature, 45min).

## Contact information

Orders: [order.cn@immunoway.com](mailto:order.cn@immunoway.com)  
 Support: [support.cn@immunoway.com](mailto:support.cn@immunoway.com)  
 Telephone: 400-8787-807(China)  
 Website: <http://www.immunoway.com.cn>  
 Address: 2200 Ringwood Ave San Jose, CA 95131 USA



Please scan the QR code to access additional product information:  
**Glypican-2 Rabbit pAb**

For Research Use Only. Not for Use in Diagnostic Procedures.

[Antibody](#) | [ELISA Kits](#) | [Protein](#) | [Reagents](#)