

## GG12C Rabbit pAb

CatalogNo: YT6351

### Key Features

#### Host Species

- Rabbit

#### Reactivity

- Human

#### Applications

- WB

#### MW

- 13kD (Calculated)

#### Isotype

- IgG

### Recommended Dilution Ratios

WB 1:500-2000

### Storage

**Storage\*** -15°C to -25°C/1 year(Do not lower than -25°C)

**Formulation** Liquid in PBS containing 50% glycerol, 0.5% BSA and 0.02% sodium azide.

### Basic Information

**Clonality** Polyclonal

### Immunogen Information

**Immunogen** Synthesized peptide derived from human GG12C AA range: 42-92

**Specificity** This antibody detects endogenous levels of GG12C at Human

### Target Information

**Gene name** GAGE12B; GAGE12C; GAGE12D; GAGE12E

**Protein Name** GG12C

**Organism**

Human

**Gene ID**

[100132399;](#)

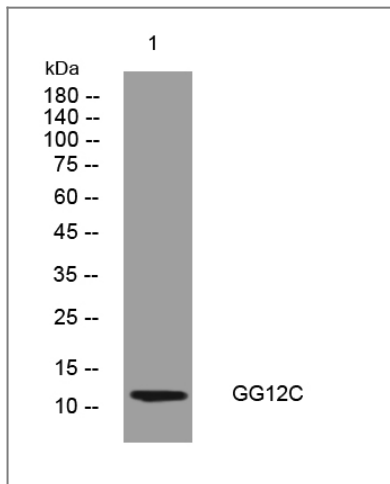
**UniProt ID**

[A1L429;](#)

**Function**

Function:Antigen, recognized on melanoma by autologous cytolytic T-lymphocytes.,Function:Antigen, recognized on melanoma by autologous cytolytic T-lymphocytes. Completely silent in normal adult tissues, except testis.,similarity:Belongs to the GAGE family.,tissue specificity:Expressed in a variety of tumor tissues but not in normal tissues, except testis.,tissue specificity:Expressed in some prostate cancer tissues but not in normal prostate tissue.,tissue specificity:Not expressed in normal tissues, except in testis, but expressed by a large proportion of tumors of various histological origins.,

## Validation Data



Western blot analysis of lysates from 293T cells, primary antibody was diluted at 1:1000, 4° over night

## Contact information

Orders: [order.cn@immunoway.com](mailto:order.cn@immunoway.com)  
Support: [support.cn@immunoway.com](mailto:support.cn@immunoway.com)  
Telephone: 400-8787-807(China)  
Website: <http://www.immunoway.com.cn>  
Address: 2200 Ringwood Ave San Jose, CA 95131 USA



Please scan the QR code to access additional product information:  
**GG12C Rabbit pAb**

For Research Use Only. Not for Use in Diagnostic Procedures.

[Antibody](#) | [ELISA Kits](#) | [Protein](#) | [Reagents](#)