

## KDEL1 Rabbit pAb

CatalogNo: YT6401

### Key Features

#### Host Species

- Rabbit

#### Reactivity

- Human, Mouse

#### Applications

- WB, ELISA, IHC

#### MW

- 55kD (Calculated)

#### Isotype

- IgG

### Recommended Dilution Ratios

WB 1:500-2000

IHC 1:50-300

ELISA 1:2000-20000

### Storage

#### Storage\*

-15°C to -25°C/1 year (Do not lower than -25°C)

#### Formulation

Liquid in PBS containing 50% glycerol, 0.5% BSA and 0.02% sodium azide.

### Basic Information

#### Clonality

Polyclonal

### Immunogen Information

#### Immunogen

Synthesized peptide derived from human KDEL1 AA range: 4-54

#### Specificity

This antibody detects endogenous levels of KDEL1 at Human/Mouse

### Target Information

#### Gene name

KDELC1 EP58 UNQ1910/PRO4357

**Protein Name** KDEL1

**Organism**

**Gene ID**

**UniProt ID**

Human

[79070;](#)

[Q6UW63;](#)

Mouse

[72050;](#)

[Q9JHP7;](#)

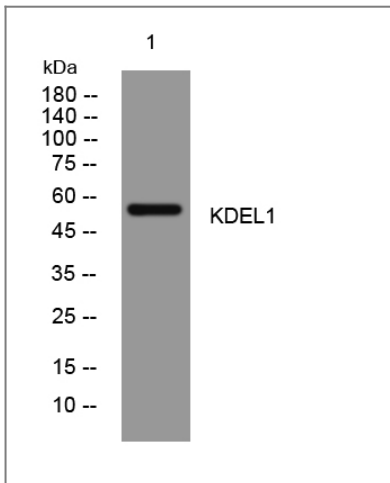
**Cellular  
Localization**

Endoplasmic reticulum lumen .

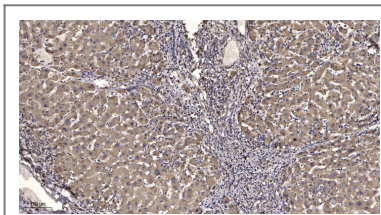
**Function**

PTM:N-glycosylated.,similarity:Belongs to the KDELC family.,similarity:Contains 1 filamin repeat.,

## Validation Data



Western blot analysis of lysates from KB cells, primary antibody was diluted at 1:1000, 4° over night



Immunohistochemical analysis of paraffin-embedded human liver cancer. 1, Antibody was diluted at 1:200(4° overnight). 2, Tris-EDTA,pH9.0 was used for antigen retrieval. 3,Secondary antibody was diluted at 1:200(room temperature, 45min).

## Contact information

Orders: order.cn@immunoway.com  
Support: support.cn@immunoway.com  
Telephone: 400-8787-807(China)  
Website: <http://www.immunoway.com.cn>  
Address: 2200 Ringwood Ave San Jose, CA 95131 USA



Please scan the QR code to access additional product information:  
**KDEL1 Rabbit pAb**

