

C1T9A Rabbit pAb

CatalogNo: YT6634

| Key Features

Host Species

- Rabbit

Reactivity

- Human, Mouse

Applications

- WB

MW

- 37kD (Calculated)

Isotype

- IgG

| Recommended Dilution Ratios

WB 1:500-2000

| Storage

Storage*

-15°C to -25°C/1 year (Do not lower than -25°C)

Formulation

Liquid in PBS containing 50% glycerol, 0.5% BSA and 0.02% sodium azide.

| Basic Information

Clonality

Polyclonal

| Immunogen Information

Immunogen

Synthesized peptide derived from human C1T9A AA range: 28-78

Specificity

This antibody detects endogenous levels of C1T9A at Human

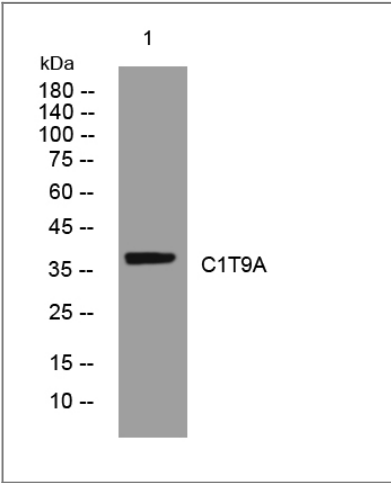
| Target Information

Gene name

C1QTNF9 C1QTNF9A UNQ6503/PRO21380

Protein Name	C1T9A		
	Organism	Gene ID	UniProt ID
	Human	338872;	P0C862;
Cellular Localization	Secreted .		
Tissue specificity	Expressed predominantly in adipose tissue.		
Function	similarity:Contains 1 C1q domain.,similarity:Contains 3 collagen-like domains.,		

| Validation Data



Western blot analysis of lysates from Jurkat cells, primary antibody was diluted at 1:1000, 4°over night

| Contact information

Orders: order.cn@immunoway.com
Support: support.cn@immunoway.com
Telephone: 400-8787-807(China)
Website: http://www.immunoway.com.cn
Address: 2200 Ringwood Ave San Jose, CA 95131 USA



Please scan the QR code to access additional product information:
C1T9A Rabbit pAb