

ITM2C Rabbit pAb

CatalogNo: YT6651

Key Features

Host Species

- Rabbit

Reactivity

- Human, Mouse, Rat

Applications

- WB, IHC

MW

- 29kD (Calculated)

Isotype

- IgG

Recommended Dilution Ratios

WB 1:500-2000

IHC 1:50-300

Storage

Storage*

-15°C to -25°C/1 year (Do not lower than -25°C)

Formulation

Liquid in PBS containing 50% glycerol, 0.5% BSA and 0.02% sodium azide.

Basic Information

Clonality

Polyclonal

Immunogen Information

Immunogen

Synthesized peptide derived from human ITM2C AA range: 1-51

Specificity

This antibody detects endogenous levels of ITM2C at Human/Mouse/Rat

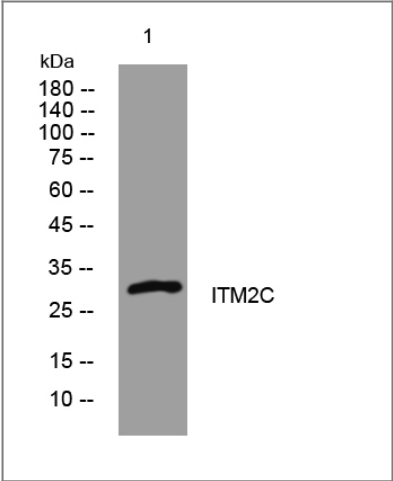
Target Information

Gene name

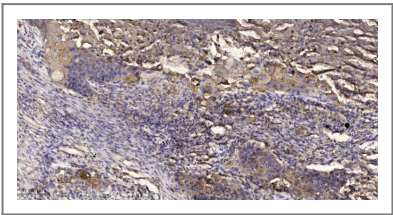
ITM2C BRI3 hucep-14 NPD018 PSEC0047

Protein Name	ITM2C		
	Organism	Gene ID	UniProt ID
	Human	81618;	Q9NQX7;
	Mouse	64294;	Q91VK4;
	Rat	301575;	Q5PQL7;
Cellular Localization	Lysosome membrane ; Single-pass type II membrane protein . Cell membrane ; Single-pass type II membrane protein .		
Tissue specificity	High levels in the brain, specifically in the cerebral cortex, medulla, amygdala, hippocampus, thalamus, caudate nucleus, cerebellum, olfactory lobe and spinal cord. Very low levels in other organs.		
Function	PTM:Type I membrane-bound, as well as soluble, furin has a pre-eminent role in ITM2C proteolytic processing. PCSK7 and PCSK5 may also be involved although to a lesser extent. The soluble form of PCSK7 is incapable of processing ITM2C.,similarity:Belongs to the ITM2 family.,similarity:Contains 1 BRICHOS domain.,subunit:Interacts with BACE1.,tissue specificity:High levels in the brain, specifically in the cerebral cortex, medulla, amygdala, hippocampus, thalamus, caudate nucleus, cerebellum, olfactory lobe and spinal cord. Very low levels in other organs.,		

| Validation Data



Western blot analysis of lysates from MDA-MB cells, primary antibody was diluted at 1:1000, 4°over night



Immunohistochemical analysis of paraffin-embedded human Squamous cell carcinoma of lung. 1, Antibody was diluted at 1:200(4° overnight). 2, Tris-EDTA,pH9.0 was used for antigen retrieval. 3,Secondary antibody was diluted at 1:200(room temperature, 45min).

| Contact information

Orders: order.cn@immunoway.com
Support: support.cn@immunoway.com
Telephone: 400-8787-807(China)
Website: <http://www.immunoway.com.cn>
Address: 2200 Ringwood Ave San Jose, CA 95131 USA



Please scan the QR code
to access additional
product information:
ITM2C Rabbit pAb

For Research Use Only. Not for Use in Diagnostic Procedures.

[Antibody](#) | [ELISA Kits](#) | [Protein](#) | [Reagents](#)