

## SMS1 Rabbit pAb

CatalogNo: YT6800

### Key Features

**Host Species**

- Rabbit

**Reactivity**

- Human, Mouse, Rat

**Applications**

- WB, ELISA, IHC

**MW**

- 46kD (Calculated)

**Isotype**

- IgG

### Recommended Dilution Ratios

WB 1:500-2000

IHC 1:50-300

ELISA 1:2000-20000

### Storage

**Storage\***

-15°C to -25°C/1 year (Do not lower than -25°C)

**Formulation**

Liquid in PBS containing 50% glycerol, 0.5% BSA and 0.02% sodium azide.

### Basic Information

**Clonality**

Polyclonal

### Immunogen Information

**Immunogen**

Synthesized peptide derived from human SMS1 AA range: 156-206

**Specificity**

This antibody detects endogenous levels of SMS1 at Human/Mouse/Rat

### Target Information

**Gene name**

SGMS1 MOB SMS1 TMEM23

Protein Name SMS1

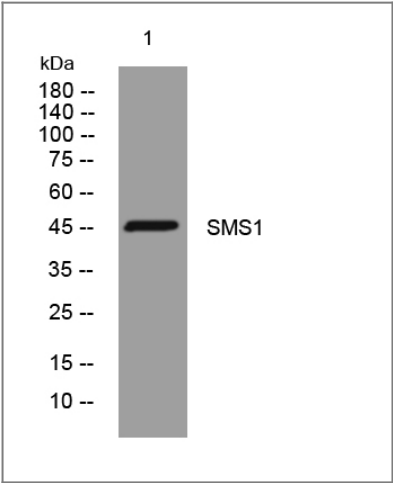
Organism	Gene ID	UniProt ID
Human	<a href="#">259230</a> ;	<a href="#">Q86VZ5</a> ;
Mouse	<a href="#">208449</a> ;	<a href="#">Q8VCQ6</a> ;
Rat	<a href="#">353229</a> ;	<a href="#">Q7TSX5</a> ;

Cellular Localization Golgi apparatus membrane ; Multi-pass membrane protein .

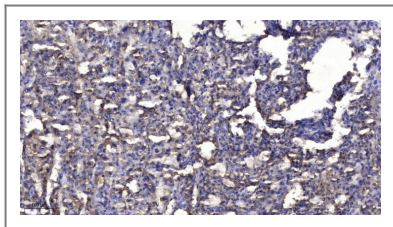
Tissue specificity Brain, heart, kidney, liver, muscle and stomach.

Function Catalytic activity:A ceramide + a phosphatidylcholine = a sphingomyelin + a 1,2-diacyl-sn-glycerol.,enzyme regulation:Inhibited by bacterial PC-phospholipase C inhibitor D609.,Function:Bidirectional lipid cholinephosphotransferase capable of converting phosphatidylcholine (PC) and ceramide to sphingomyelin (SM) and diacylglycerol (DAG) and vice versa. Direction is dependent on the relative concentrations of DAG and ceramide as phosphocholine acceptors. Directly and specifically recognizes the choline head group on the substrate. Also requires two fatty chains on the choline-P donor molecule in order to be recognized efficiently as a substrate. Does not function strictly as a SM synthase. Suppresses BAX-mediated apoptosis and also prevents cell death in response to stimuli such as hydrogen peroxide, osmotic stress, elevated temperature and exogenously supplied sphingolipids. May protect against cell death by reversing the stress-inducible increase in levels of proapoptotic ceramide. Required for cell growth.,miscellaneous:Overexpression of the human protein in mouse causes increased non-HDL-sphingomyelin and non-HDL cholesterol levels, decreased HDL-sphingomyelin and HDL-cholesterol levels and increases lipoprotein atherogenic potential.,sequence Caution:Unusual initiator. The initiator methionine is coded by a non-canonical CTG leucine codon.,similarity:Belongs to the sphingomyelin synthase family.,similarity:Contains 1 SAM (sterile alpha motif) domain.,tissue specificity:Brain, heart, kidney, liver, muscle and stomach.,

Validation Data



Western blot analysis of lysates from KB cells, primary antibody was diluted at 1:1000, 4°over night



Immunohistochemical analysis of paraffin-embedded human liver cancer. 1, Antibody was diluted at 1:200(4° overnight). 2, Tris-EDTA,pH9.0 was used for antigen retrieval. 3,Secondary antibody was diluted at 1:200(room temperature, 45min).

## | Contact information

Orders: [order.cn@immunoway.com](mailto:order.cn@immunoway.com)  
Support: [support.cn@immunoway.com](mailto:support.cn@immunoway.com)  
Telephone: 400-8787-807(China)  
Website: <http://www.immunoway.com.cn>  
Address: 2200 Ringwood Ave San Jose, CA 95131 USA



Please scan the QR code to access additional product information:  
**SMS1 Rabbit pAb**

---

For Research Use Only. Not for Use in Diagnostic Procedures.

[Antibody](#) | [ELISA Kits](#) | [Protein](#) | [Reagents](#)