

DRAM2 Rabbit pAb

CatalogNo: YT6810

| Key Features

Host Species

- Rabbit

Reactivity

- Human, Mouse, Rat

Applications

- WB

MW

- 29kD (Calculated)

Isotype

- IgG

| Recommended Dilution Ratios

WB 1:500-2000

| Storage

Storage* -15°C to -25°C/1 year (Do not lower than -25°C)

Formulation Liquid in PBS containing 50% glycerol, 0.5% BSA and 0.02% sodium azide.

| Basic Information

Clonality Polyclonal

| Immunogen Information

Immunogen Synthesized peptide derived from human DRAM2 AA range: 57-107

Specificity This antibody detects endogenous levels of DRAM2 at Human/Mouse/Rat

| Target Information

Gene name DRAM2 TMEM77 PSEC0031 UNQ154/PRO180

Protein Name DRAM2

| Organism | Gene ID | UniProt ID |
|----------|--------------------------|--------------------------|
| Human | 128338 ; | Q6UX65 ; |
| Mouse | 67171 ; | Q9CR48 ; |
| Rat | 362011 ; | Q5BK09 ; |

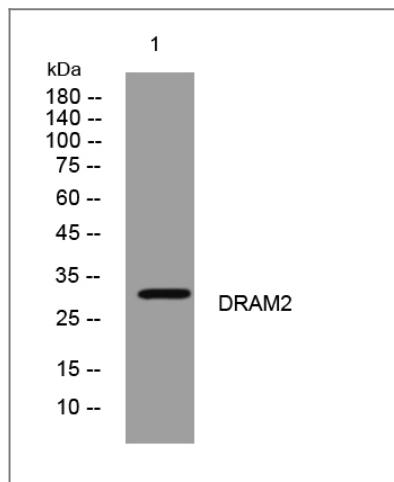
Cellular Localization

Lysosome membrane ; Multi-pass membrane protein . Photoreceptor inner segment . Apical cell membrane . Localized to photoreceptor inner segments and to the apical surface of retinal pigment epithelial cells. .

Tissue specificity

Expression is down-regulated in ovarian tumors (at protein level). Widely expressed with highest levels in placenta and heart. Expressed in the retina. Not detected in brain or thymus.

Validation Data



Western blot analysis of lysates from THP-1 cells, primary antibody was diluted at 1:1000, 4°over night

Contact information

Orders: order.cn@immunoway.com
Support: support.cn@immunoway.com
Telephone: 400-8787-807(China)
Website: <http://www.immunoway.com.cn>
Address: 2200 Ringwood Ave San Jose, CA 95131 USA



Please scan the QR code to access additional product information:
DRAM2 Rabbit pAb