

KR102 Rabbit pAb

CatalogNo: YT7011

Key Features

Host Species

- Rabbit

Reactivity

- Human

Applications

- WB,ELISA,IHC

MW

- 28kD (Calculated)

Isotype

- IgG

Recommended Dilution Ratios

WB 1:500-2000**IHC 1:50-300****ELISA 1:2000-20000**

Storage

Storage*

-15°C to -25°C/1 year(Do not lower than -25°C)

Formulation

Liquid in PBS containing 50% glycerol, 0.5% BSA and 0.02% sodium azide.

Basic Information

Clonality

Polyclonal

Immunogen Information

Immunogen

Synthesized peptide derived from human KR102 AA range: 173-223

Specificity

This antibody detects endogenous levels of KR102 at Human

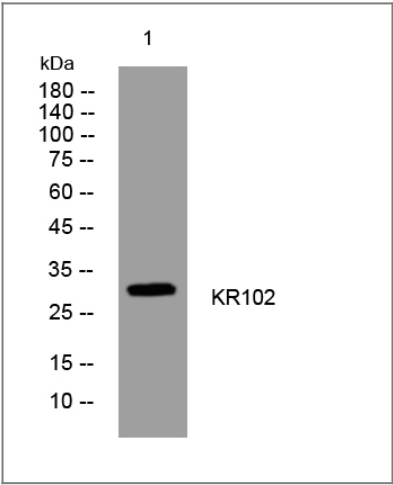
Target Information

Gene name

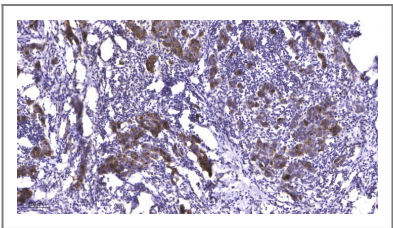
KRTAP10-2 KAP10.2 KAP18-2 KRTAP10.2 KRTAP18-2 KRTAP18.2

Protein Name	KR102		
	Organism	Gene ID	UniProt ID
	Human	386679 ;	P60368 ;
Cellular Localization	keratin filament,		
Tissue specificity	Restricted to a narrow region of the hair fiber cuticle, lying approximately 20 cell layers above the apex of the dermal papilla of the hair root; not detected in any other tissues.		
Function	<p>Alternative products:A number of isoforms are produced,Function:In the hair cortex, hair keratin intermediate filaments are embedded in an interfilamentous matrix, consisting of hair keratin-associated proteins (KRTAP), which are essential for the formation of a rigid and resistant hair shaft through their extensive disulfide bond cross-linking with abundant cysteine residues of hair keratins. The matrix proteins include the high-sulfur and high-glycine-tyrosine keratins.,similarity:Belongs to the KRTAP type 10 family.,subunit:Interacts with hair keratins.,tissue specificity:Restricted to a narrow region of the hair fiber cuticle, lying approximately 20 cell layers above the apex of the dermal papilla of the hair root; not detected in any other tissues.,</p>		

Validation Data



Western blot analysis of lysates from AD293 cells, primary antibody was diluted at 1:1000, 4°over night



Immunohistochemical analysis of paraffin-embedded human Breast cancer. 1, Antibody was diluted at 1:200(4° overnight). 2, Tris-EDTA,pH9.0 was used for antigen retrieval. 3,Secondary antibody was diluted at 1:200(room temperature, 45min).

Contact information

Orders: order.cn@immunoway.com
Support: support.cn@immunoway.com
Telephone: 400-8787-807(China)
Website: <http://www.immunoway.com.cn>
Address: 2200 Ringwood Ave San Jose, CA 95131 USA



Please scan the QR code
to access additional
product information:
KR102 Rabbit pAb

For Research Use Only. Not for Use in Diagnostic Procedures.

[Antibody](#) | [ELISA Kits](#) | [Protein](#) | [Reagents](#)