

## DB133 Rabbit pAb

CatalogNo: YT7012

### Key Features

#### Host Species

- Rabbit

#### Reactivity

- Human

#### Applications

- IHC,IF

#### MW

- 7kD (Calculated)

#### Isotype

- IgG

### Recommended Dilution Ratios

IHC 1:50-200

IF 1:50-200

### Storage

**Storage\*** -15°C to -25°C/1 year(Do not lower than -25°C)

**Formulation** Liquid in PBS containing 50% glycerol, 0.5% BSA and 0.02% sodium azide.

### Basic Information

**Clonality** Polyclonal

### Immunogen Information

**Immunogen** Synthesized peptide derived from human DB133 AA range: 2-52

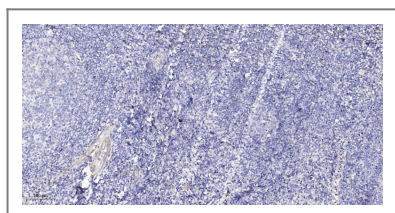
**Specificity** This antibody detects endogenous levels of DB133 at Human

### Target Information

**Gene name** DEFB133

<b>Protein Name</b>	DB133		
	<b>Organism</b>	<b>Gene ID</b>	<b>UniProt ID</b>
	Human	<a href="#">403339;</a>	<a href="#">Q30KQ1;</a>
<b>Cellular Localization</b>	Secreted .		
<b>Function</b>	Caution:Was termed (Ref.2) DEFB134.,Function:Has antibacterial activity .,similarity:Belongs to the beta-defensin family.,		

## | Validation Data



Immunohistochemical analysis of paraffin-embedded human tonsil. 1, Antibody was diluted at 1:200(4° overnight). 2, Tris-EDTA,pH9.0 was used for antigen retrieval. 3,Secondary antibody was diluted at 1:200(room temperature, 30min).

## | Contact information

Orders: [order.cn@immunoway.com](mailto:order.cn@immunoway.com)  
 Support: [support.cn@immunoway.com](mailto:support.cn@immunoway.com)  
 Telephone: 400-8787-807(China)  
 Website: <http://www.immunoway.com.cn>  
 Address: 2200 Ringwood Ave San Jose, CA 95131 USA



Please scan the QR code to access additional product information:  
**DB133 Rabbit pAb**

For Research Use Only. Not for Use in Diagnostic Procedures.

[Antibody](#) | [ELISA Kits](#) | [Protein](#) | [Reagents](#)