

RBP2 Rabbit pAb

CatalogNo: YT7076

Key Features

Host Species

- Rabbit

Reactivity

- Human, Mouse

Applications

- IHC, IF

MW

- 355kD (Calculated)

Isotype

- IgG

Recommended Dilution Ratios

IHC 1:50-200

IF 1:50-200

Storage

Storage*

-15°C to -25°C/1 year (Do not lower than -25°C)

Formulation

Liquid in PBS containing 50% glycerol, 0.5% BSA and 0.02% sodium azide.

Basic Information

Clonality

Polyclonal

Immunogen Information

Immunogen

Synthesized peptide derived from human RBP2 AA range: 108-158

Specificity

This antibody detects endogenous levels of RBP2 at Human/Mouse

Target Information

Gene name

RANBP2 NUP358

Protein Name

RBP2

Organism**Gene ID****UniProt ID**

Human

[5903;](#)[P49792;](#)

Mouse

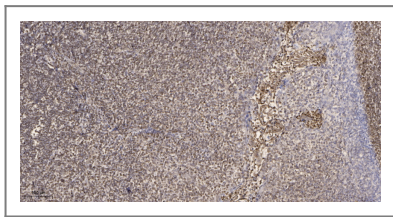
[19386;](#)[Q9ERU9;](#)**Cellular
Localization**

Nucleus . Nucleus membrane . Nucleus, nuclear pore complex . Nucleus envelope .
Detected in diffuse and discrete intranuclear foci (PubMed:11839768). Cytoplasmic
filaments (PubMed:7775481). .

Function

Disease:Defects in RANBP2 are the cause of susceptibility to acute necrotizing
encephalopathy type 1 (ANE1) [MIM:608033]. Acute necrotizing encephalopathy (ANE) is a
rapidly progressive encephalopathy, seizures, and coma that can occur within days in
otherwise healthy children after common viral infections such as influenza and
parainfluenza, without evidence of viral infection of the brain or inflammatory cell
infiltration. Brain T2-weighted magnetic resonance imaging reveals characteristic symmetric
lesions present in the thalami, pons, and brainstem.,Domain:Contains F-X-F-G
repeats.,Function:E3 SUMO-protein ligase which facilitates SUMO1 and SUMO2 conjugation
by UBE2I. Involved in transport factor (Ran-GTP, karyopherin)-mediated protein import via
the F-G repeat-containing domain which acts as a docking site for substrates. Could also
have isomerase or chaperone activity and may bind RNA or DNA. Component of the nuclear
export pathway. Specific docking site for the nuclear export factor
exportin-1.,pathway:Protein modification; protein sumoylation.,PTM:Polyubiquitinated by
PARK2, which leads to proteasomal degradation.,similarity:Contains 1 PPIase cyclophilin-
type domain.,similarity:Contains 1 TPR repeat.,similarity:Contains 4 RanBD1
domains.,similarity:Contains 8 RanBP2-type zinc fingers.,subcellular location:Cytoplasmic
filaments.,subunit:Forms a tight complex with RANBP1 and UBE2I. Interacts with SUMO1 but
not SUMO2. Interacts with PARK2. Interacts with sumoylated RANGAP1.,

Validation Data



Immunohistochemical analysis of paraffin-embedded human tonsil. 1, Antibody was diluted at 1:200(4° overnight). 2, Tris-EDTA,pH9.0 was used for antigen retrieval. 3,Secondary antibody was diluted at 1:200(room temperature, 45min).

Contact information

Orders: order.cn@immunoway.com
Support: support.cn@immunoway.com
Telephone: 400-8787-807(China)
Website: <http://www.immunoway.com.cn>
Address: 2200 Ringwood Ave San Jose, CA 95131 USA



Please scan the QR code
to access additional
product information:
RBP2 Rabbit pAb

