

MTCH1 Rabbit pAb

CatalogNo: YT7114

Key Features

Host Species

- Rabbit

Reactivity

- Human, Mouse

Applications

- WB, ELISA, IHC

MW

- 43kD (Calculated)

Isotype

- IgG

Recommended Dilution Ratios

WB 1:500-2000**IHC 1:50-300****ELISA 1:2000-20000**

Storage

Storage*

-15°C to -25°C/1 year (Do not lower than -25°C)

Formulation

Liquid in PBS containing 50% glycerol, 0.5% BSA and 0.02% sodium azide.

Basic Information

Clonality

Polyclonal

Immunogen Information

Immunogen

Synthesized peptide derived from human MTCH1 AA range: 235-285

Specificity

This antibody detects endogenous levels of MTCH1 at Human/Mouse

Target Information

Gene name

MTCH1 PSAP CGI-64 UNQ1871/PRO4314

Protein Name MTCH1

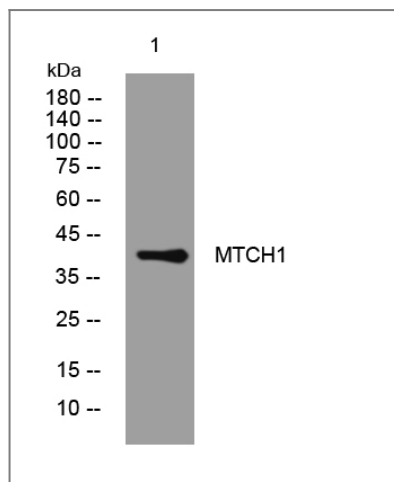
Organism	Gene ID	UniProt ID
Human	23787 ;	Q9NZJ7 ;
Mouse	56462 ;	Q791T5 ;

Cellular Localization Mitochondrion outer membrane ; Multi-pass membrane protein .

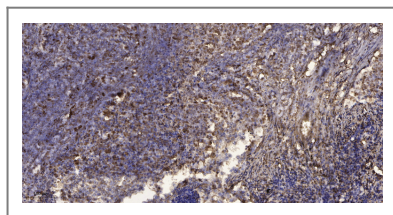
Tissue specificity Widely expressed with a predominant expression in brain.

Function Function:Potential mitochondrial transporter. May play a role in apoptosis.,similarity:Belongs to the mitochondrial carrier family.,similarity:Contains 2 Solcar repeats.,subunit:Interacts with PSEN1.,tissue specificity:Widely expressed with a predominant expression in brain.,

Validation Data



Western blot analysis of lysates from A431 cells, primary antibody was diluted at 1:1000, 4° over night



Immunohistochemical analysis of paraffin-embedded human Squamous cell carcinoma of lung. 1, Antibody was diluted at 1:200(4° overnight). 2, Tris-EDTA,pH9.0 was used for antigen retrieval. 3,Secondary antibody was diluted at 1:200(room temperature, 45min).

Contact information

Orders: order.cn@immunoway.com
Support: support.cn@immunoway.com
Telephone: 400-8787-807(China)
Website: <http://www.immunoway.com.cn>
Address: 2200 Ringwood Ave San Jose, CA 95131 USA



Please scan the QR code to access additional product information:
MTCH1 Rabbit pAb

