

POTEC Rabbit pAb

CatalogNo: YT7417

| Key Features

Host Species

- Rabbit

Reactivity

- Human

Applications

- WB

MW

- 60kD (Calculated)

Isotype

- IgG

| Recommended Dilution Ratios

WB 1:500-2000

| Storage

Storage*

-15°C to -25°C/1 year(Do not lower than -25°C)

Formulation

Liquid in PBS containing 50% glycerol, 0.5% BSA and 0.02% sodium azide.

| Basic Information

Clonality

Polyclonal

| Immunogen Information

Immunogen

Synthesized peptide derived from human POTEC AA range: 265-315

Specificity

This antibody detects endogenous levels of POTEC at Human

| Target Information

Gene name

POTEC A26B2 POTE18

Protein Name POTE

Organism

Gene ID

UniProt ID

Human

[388468](#);

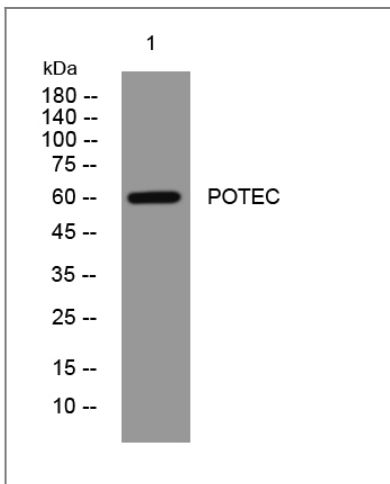
[B2RU33](#);

Tissue specificity Expressed in prostate and testis.

Function

similarity:Belongs to the POTE family.,similarity:Contains 6 ANK repeats.,similarity:Contains 7 ANK repeats.,tissue specificity:Expressed in prostate and testis.,tissue specificity:Expressed in prostate, ovary, testis, placenta and prostate cancer cell lines. Localizes to basal and terminal prostate epithelial cells.,

Validation Data



Western blot analysis of lysates from HeLa cells, primary antibody was diluted at 1:1000, 4°over night

Contact information

Orders: order.cn@immunoway.com
Support: support.cn@immunoway.com
Telephone: 400-8787-807(China)
Website: <http://www.immunoway.com.cn>
Address: 2200 Ringwood Ave San Jose, CA 95131 USA



Please scan the QR code to access additional product information:
POTE Rabbit pAb

For Research Use Only. Not for Use in Diagnostic Procedures.

[Antibody](#) | [ELISA Kits](#) | [Protein](#) | [Reagents](#)