

## CLCB Rabbit pAb

CatalogNo: YT7442

### | Key Features

#### Host Species

- Rabbit

#### Reactivity

- Human, Mouse, Rat

#### Applications

- WB

#### MW

- 25kD (Calculated)

#### Isotype

- IgG

### | Recommended Dilution Ratios

WB 1:500-2000

### | Storage

**Storage\*** -15°C to -25°C/1 year (Do not lower than -25°C)

**Formulation** Liquid in PBS containing 50% glycerol, 0.5% BSA and 0.02% sodium azide.

### | Basic Information

**Clonality** Polyclonal

### | Immunogen Information

**Immunogen** Synthesized peptide derived from human CLCB AA range: 168-218

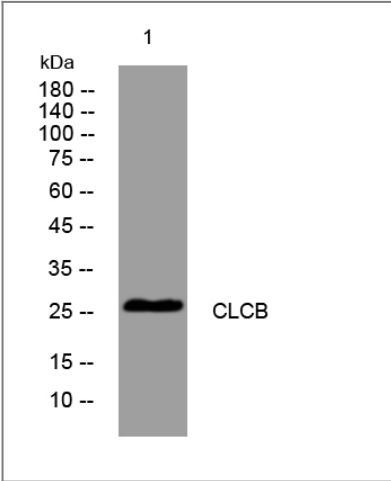
**Specificity** This antibody detects endogenous levels of CLCB at Human/Mouse/Rat

### | Target Information

**Gene name** CLTB

Protein Name	CLCB		
	Organism	Gene ID	UniProt ID
	Human	<a href="#">1212;</a>	<a href="#">P09497;</a>
	Mouse	<a href="#">74325;</a>	<a href="#">Q6IRU5;</a>
	Rat	<a href="#">116561;</a>	<a href="#">P08082;</a>
Cellular Localization	Cytoplasmic vesicle membrane; Peripheral membrane protein; Cytoplasmic side. Membrane, coated pit; Peripheral membrane protein; Cytoplasmic side. Cytoplasmic face of coated pits and vesicles.		
Function	Function:Clathrin is the major protein of the polyhedral coat of coated pits and vesicles.,subcellular location:Cytoplasmic face of coated pits and vesicles.,subunit:Clathrin coats are formed from molecules containing 3 heavy chains and 3 light chains. Interacts (via N-terminus) with HIP1. Interacts with HIP1R.,		

| Validation Data



Western blot analysis of lysates from SW480 cells, primary antibody was diluted at 1:1000, 4°over night

| Contact information

Orders: order.cn@immunoway.com  
Support: support.cn@immunoway.com  
Telephone: 400-8787-807(China)  
Website: http://www.immunoway.com.cn  
Address: 2200 Ringwood Ave San Jose, CA 95131 USA



Please scan the QR code to access additional product information:  
**CLCB Rabbit pAb**