

Z658B Rabbit pAb

CatalogNo: YT7458

| Key Features

Host Species

- Rabbit

Reactivity

- Human

Applications

- WB

MW

- 90kD (Calculated)

Isotype

- IgG

| Recommended Dilution Ratios

WB 1:500-2000

| Storage

Storage* -15°C to -25°C/1 year(Do not lower than -25°C)

Formulation Liquid in PBS containing 50% glycerol, 0.5% BSA and 0.02% sodium azide.

| Basic Information

Clonality Polyclonal

| Immunogen Information

Immunogen Synthesized peptide derived from human Z658B AA range: 541-591

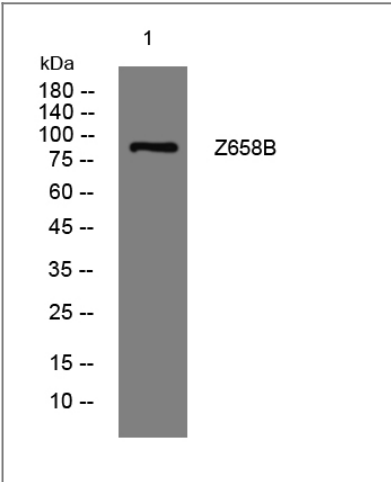
Specificity This antibody detects endogenous levels of Z658B at Human

| Target Information

Gene name ZNF658B

Protein Name	Z658B		
	Organism	Gene ID	UniProt ID
	Human		Q4V348 ;
Cellular Localization	Nucleus .		
Function	Function:May be involved in transcriptional regulation.,similarity:Belongs to the krueppel C2H2-type zinc-finger protein family.,similarity:Contains 21 C2H2-type zinc fingers.,		

| Validation Data



Western blot analysis of lysates from SW480 cells, primary antibody was diluted at 1:1000, 4°over night

| Contact information

Orders:

order.cn@immunoway.com

Support:

support.cn@immunoway.com

Telephone:

400-8787-807(China)

Website:

http://www.immunoway.com.cn

Address:

2200 Ringwood Ave San Jose, CA 95131 USA



Please scan the QR code to access additional product information:
Z658B Rabbit pAb