

## ZDBF2 Rabbit pAb

CatalogNo: YT7467

### Key Features

#### Host Species

- Rabbit

#### Reactivity

- Human, Mouse

#### Applications

- WB

#### MW

- 259kD (Calculated)

#### Isotype

- IgG

### Recommended Dilution Ratios

WB 1:500-2000

### Storage

**Storage\*** -15°C to -25°C/1 year (Do not lower than -25°C)

**Formulation** Liquid in PBS containing 50% glycerol, 0.5% BSA and 0.02% sodium azide.

### Basic Information

**Clonality** Polyclonal

### Immunogen Information

**Immunogen** Synthesized peptide derived from human ZDBF2 AA range: 919-969

**Specificity** This antibody detects endogenous levels of ZDBF2 at Human/Mouse

### Target Information

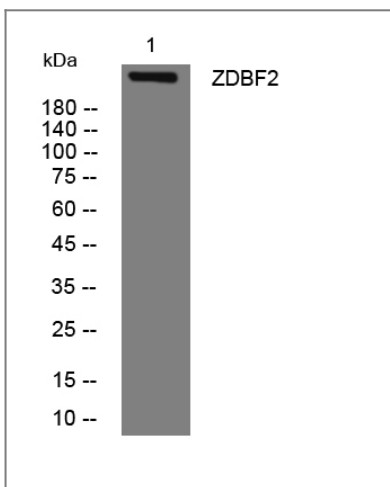
**Gene name** ZDBF2 KIAA1571

**Protein Name** ZDBF2

Organism	Gene ID	UniProt ID
Human	<a href="#">57683;</a>	<a href="#">Q9HCK1;</a>
Mouse	<a href="#">73884;</a>	<a href="#">Q5SS00;</a>

**Function** similarity:Contains 1 DBF4-type zinc finger.,

## Validation Data



Western blot analysis of lysates from U2OS cells, primary antibody was diluted at 1:1000, 4° over night

## Contact information

Orders: [order.cn@immunoway.com](mailto:order.cn@immunoway.com)  
Support: [support.cn@immunoway.com](mailto:support.cn@immunoway.com)  
Telephone: 400-8787-807(China)  
Website: <http://www.immunoway.com.cn>  
Address: 2200 Ringwood Ave San Jose, CA 95131 USA



Please scan the QR code to access additional product information:  
**ZDBF2 Rabbit pAb**

For Research Use Only. Not for Use in Diagnostic Procedures.

[Antibody](#) | [ELISA Kits](#) | [Protein](#) | [Reagents](#)