

RN213 Rabbit pAb

CatalogNo: YT7705

Key Features

Host Species

- Rabbit

Reactivity

- Human, Mouse

Applications

- IHC, IF

MW

- 573kD (Calculated)

Isotype

- IgG

Recommended Dilution Ratios

IHC 1:50-200

IF 1:50-200

Storage

Storage*

-15°C to -25°C/1 year (Do not lower than -25°C)

Formulation

Liquid in PBS containing 50% glycerol, 0.5% BSA and 0.02% sodium azide.

Basic Information

Clonality

Polyclonal

Immunogen Information

Immunogen

Synthesized peptide derived from human RN213. AA range: 307-407

Specificity

This antibody detects endogenous levels of RN213 at Human/Mouse

Target Information

Gene name

RNF213 ALO17 C17orf27 KIAA1554 KIAA1618 MYSTR

Protein Name RN213

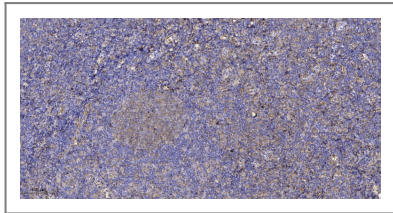
Organism	Gene ID	UniProt ID
Human	57674 ;	Q63HN8 ;
Mouse		E9Q555 ;

Cellular Localization Cytoplasm, cytosol . Lipid droplet .

Tissue specificity Widely expressed (at protein level). ; [Isoform 1]: Major isoform detected in all tissues examined. ; [Isoform 2]: Minor isoform with restricted expression.

Function Disease:A chromosomal aberration involving ALO17 is associated with anaplastic large-cell lymphoma (ALCL). Translocation t(2;17)(p23;q25) with ALK.,sequence Caution:Translated as Gln.,similarity:Contains 1 RING-type zinc finger.,

| Validation Data



Immunohistochemical analysis of paraffin-embedded human tonsil. 1, Antibody was diluted at 1:200(4° overnight). 2, Tris-EDTA,pH9.0 was used for antigen retrieval. 3,Secondary antibody was diluted at 1:200(room temperature, 30min).

| Contact information

Orders: order.cn@immunoway.com
Support: support.cn@immunoway.com
Telephone: 400-8787-807(China)
Website: <http://www.immunoway.com.cn>
Address: 2200 Ringwood Ave San Jose, CA 95131 USA



Please scan the QR code to access additional product information:
RN213 Rabbit pAb

For Research Use Only. Not for Use in Diagnostic Procedures.

[Antibody](#) | [ELISA Kits](#) | [Protein](#) | [Reagents](#)