

## UQCRC1 Rabbit pAb

CatalogNo: YT7734

### Key Features

#### Host Species

- Rabbit

#### Reactivity

- Human,Mouse,Rat

#### Applications

- WB,ELISA,IHC

#### MW

- 53kD (Calculated)

#### Isotype

- IgG

### Storage

**Storage\*** -15°C to -25°C/1 year(Do not lower than -25°C)

**Formulation** Liquid in PBS containing 50% glycerol, 0.5% BSA and 0.02% sodium azide.

### Recommended Dilution Ratios

**WB 1:500-2000**

**IHC 1:50-300**

**ELISA 1:2000-20000**

### Basic Information

**Clonality** Polyclonal

### Immunogen Information

**Immunogen** Synthesized peptide derived from human QCR1 AA range: 164-214

**Specificity** This antibody detects endogenous levels of QCR1 at Human/Mouse/Rat

### Target Information

**Gene name** UQCRC1

**Protein Name** QCR1

| Organism | Gene ID                  | UniProt ID               |
|----------|--------------------------|--------------------------|
| Human    | <a href="#">7384</a> ;   | <a href="#">P31930</a> ; |
| Mouse    | <a href="#">22273</a> ;  | <a href="#">Q9CZ13</a> ; |
| Rat      | <a href="#">301011</a> ; | <a href="#">Q68FY0</a> ; |

**Cellular Localization**

Mitochondrion inner membrane ; Peripheral membrane protein ; Matrix side .

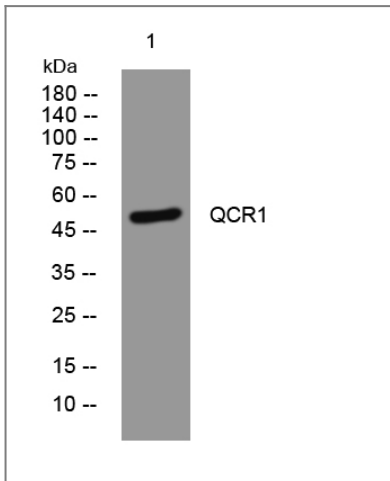
**Tissue specificity**

Expressed in brain, including substantia nigra, striatum, cortex and cerebellum, and in spinal cord, heart, kidney, liver and muscle.

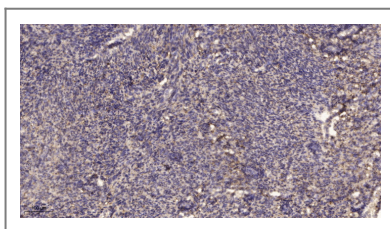
**Function**

Caution:Does not seem to have a protease activity as it lack the zinc-binding site.,Function:This is a component of the ubiquinol-cytochrome c reductase complex (complex III or cytochrome b-c1 complex), which is part of the mitochondrial respiratory chain. This protein may mediate formation of the complex between cytochromes c and c1.,similarity:Belongs to the peptidase M16 family. UQCRC1/QCR1 subfamily.,subunit:The bc1 complex contains 11 subunits: 3 respiratory subunits (cytochrome b, cytochrome c1 and Rieske/UQCRFS1), 2 core proteins (UQCRC1/QCR1 and UQCRC2/QCR2) and 6 low-molecular weight proteins (UQCRH/QCR6, UQCRB/QCR7, UQCRQ/QCR8, UQCR10/QCR9, UQCR11/QCR10 and a cleavage product of Rieske/UQCRFS1),.

## Validation Data



Western blot analysis of lysates from 293T cells, primary antibody was diluted at 1:1000, 4° over night



Immunohistochemical analysis of paraffin-embedded human uterus. 1, Antibody was diluted at 1:200(4° overnight). 2, Tris-EDTA,pH9.0 was used for antigen retrieval. 3,Secondary antibody was diluted at 1:200(room temperature, 45min).

## | Contact information

Orders: order.cn@immunoway.com  
Support: support.cn@immunoway.com  
Telephone: 400-8787-807(China)  
Website: <http://www.immunoway.com.cn>  
Address: 2200 Ringwood Ave San Jose, CA 95131 USA



Please scan the QR code  
to access additional  
product information:  
**UQCRC1 Rabbit pAb**

---

For Research Use Only. Not for Use in Diagnostic Procedures.

[Antibody](#) | [ELISA Kits](#) | [Protein](#) | [Reagents](#)