

GSDME N-terminal Rabbit pAb

CatalogNo: YT7990

Orthogonal Validated 

Key Features

Host Species

- Rabbit

Reactivity

- Human, Mouse, Rat

Applications

- IF, WB, IHC

MW

- 36kD, 55kD (Observed)

Isotype

- IgG

Recommended Dilution Ratios

IF 1:50-200

WB 1:5000-20000

IHC 1:200-300

Storage

Storage* -15°C to -25°C/1 year (Do not lower than -25°C)**Formulation** Liquid in PBS containing 50% glycerol, and 0.02% sodium azide.

Basic Information

Clonality Polyclonal

Immunogen Information

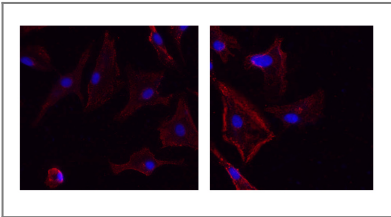
Immunogen Synthesized peptide derived from human GSDME. AA range: 1-100**Specificity** The antibody detects endogenous full length and n-terminal fragment of gsdme protein,

Target Information

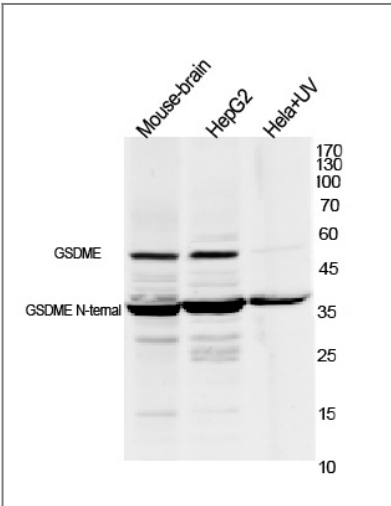
Gene name GSDME

Protein Name	Gasdermin-E,DFNA5,Dfna5h,EG14210,2310037D07Rik .4932441K13Rik ,ICERE 1,ICERE-1,Deafness, autosomal dominant 5,Non-syndromic hearing impairment protein 5,GSDME-NT		
	Organism	Gene ID	UniProt ID
	Human	1687;	O60443;
Cellular Localization	[Gasdermin-E, N-terminal]: Cell membrane ; Multi-pass membrane protein .; [Gasdermin-E]: Cytoplasm, cytosol .		
Tissue specificity	Expressed in cochlea (PubMed:9771715). Low level of expression in heart, brain, placenta, lung, liver, skeletal muscle, kidney and pancreas, with highest expression in placenta (PubMed:9771715).		
Function	Cleavage at Asp-270 by CASP3 (mature and uncleaved precursor forms) or granzyme B (GZMB) relieves autoinhibition and is sufficient to initiate pyroptosis.		

Validation Data



Immunofluorescence analysis of un-treated (left) A549 and UV treated(right) A549 cell. 1,primary Antibody was diluted at 1:200(4°C overnight). 2, Goat Anti Rabbit IgG (H&L) - Alexa Fluor 594 Secondary antibody was diluted at 1:1000(room temperature, 50min).3, Picture B: DAPI(blue) 10min.



Western blot analysis of lysates from 1)mouse-brain, 2)Hela cells treated by UV 15min,3) HepG2 cells, primary antibody was diluted at 1:1000, 4°over night, secondary antibody HRP goat anti rabbit (Immunoway:RS0002) was diluted at 1:10000

Contact information

Orders: order.cn@immunoway.com
Support: support.cn@immunoway.com
Telephone: 400-8787-807(China)
Website: <http://www.immunoway.com.cn>
Address: 2200 Ringwood Ave San Jose, CA 95131 USA



Please scan the QR code
to access additional
product information:
**GSDME N-terminal
Rabbit pAb**

For Research Use Only. Not for Use in Diagnostic Procedures.

[Antibody](#) | [ELISA Kits](#) | [Protein](#) | [Reagents](#)