

二抗产品手册

Guide for Secondary Antibody



公司简介

ImmunoWay Biotechnology Company (简称Immunoway) 公司成立于2002年, 于2012年在美国德克萨斯州注册品牌。

公司于2014年投入研发病理级免疫组化专用抗体, 国际著名单克隆抗体专家指导研发, 免疫原针对免疫组化实验而设计, 单克隆细胞株的筛选, 抗体的验证均经过千张阳性切片和阴性切片检测, 明确组织定位和亚细胞定位, 抗体特异性强, 灵敏度高, 低背景, 按照体外诊断试剂备案和注册要求研发生产。临床免疫组化应用于病理的辅助诊断和鉴别诊断, 为疾病治疗提供客观的指导方案。目前抗体种类已近200种, 覆盖肿瘤病理诊断, 如乳腺癌, 宫颈癌, 结肠癌, 胃癌, 肝癌, 淋巴瘤, 前列腺癌, 甲状腺癌等所需检测指标的绝大部分。

自公司成立一直专注于抗体的研发和生产, 多克隆抗体种类达15000+, 单克隆抗体种类2000+, 检测液态样本Elisa试剂盒700+, 检测细胞样本Cell-Based Colorimetric ELISA Kits 2000+, 满足广大科研用户的使用和需求。

Immunoway将不断研发和生产出优质的抗体及相关产品, 为临床和广大科研工作者提供更好的工具, 共同服务于生命科学。

Immunoway产品线

200+ 病理级免疫组化专用抗体

18000 科研级一抗

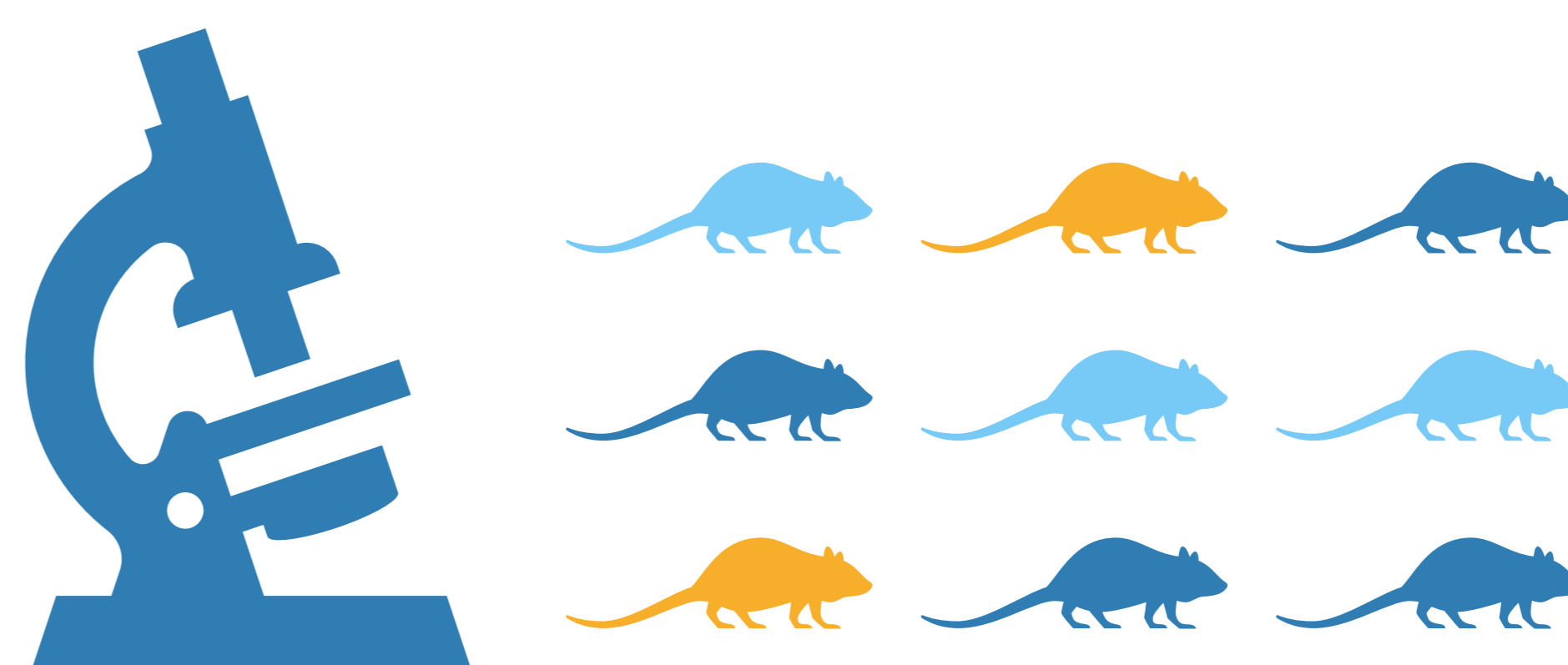
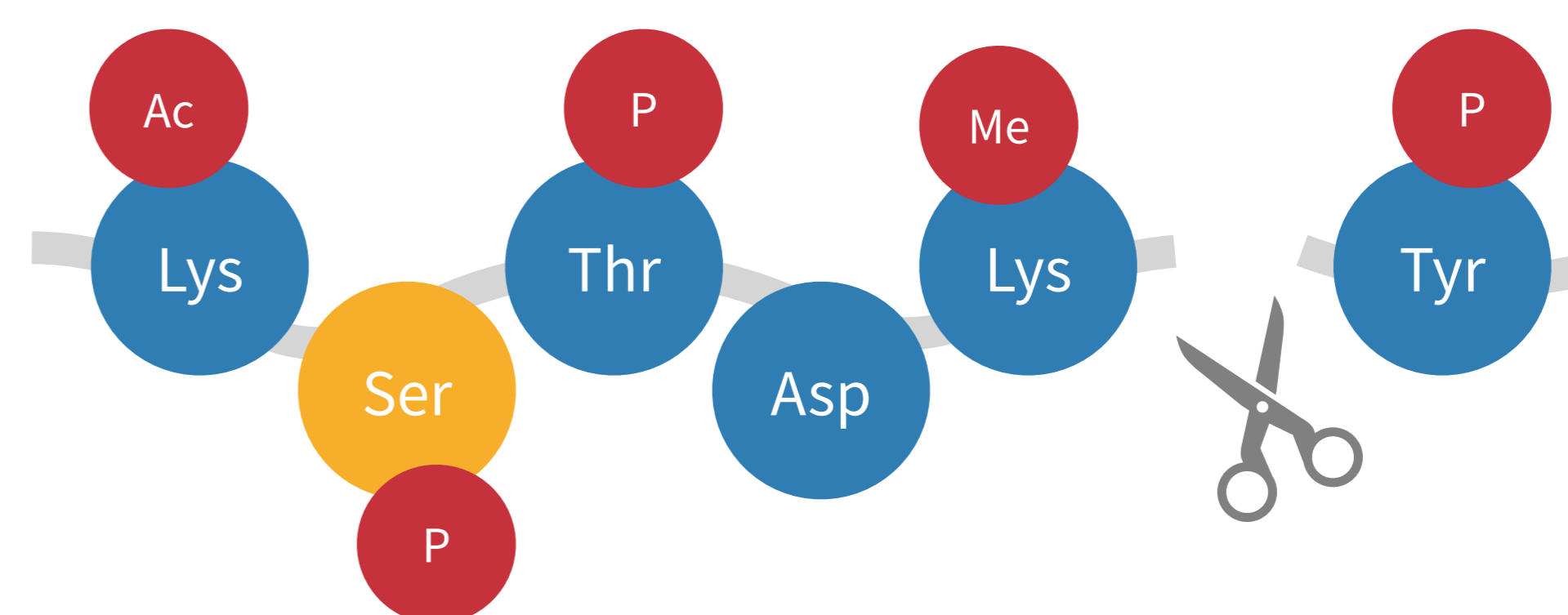
1300 小分子化合物

1000+ 二抗

200+ 标签内参荧光蛋白抗体

700+ ELISA试剂盒

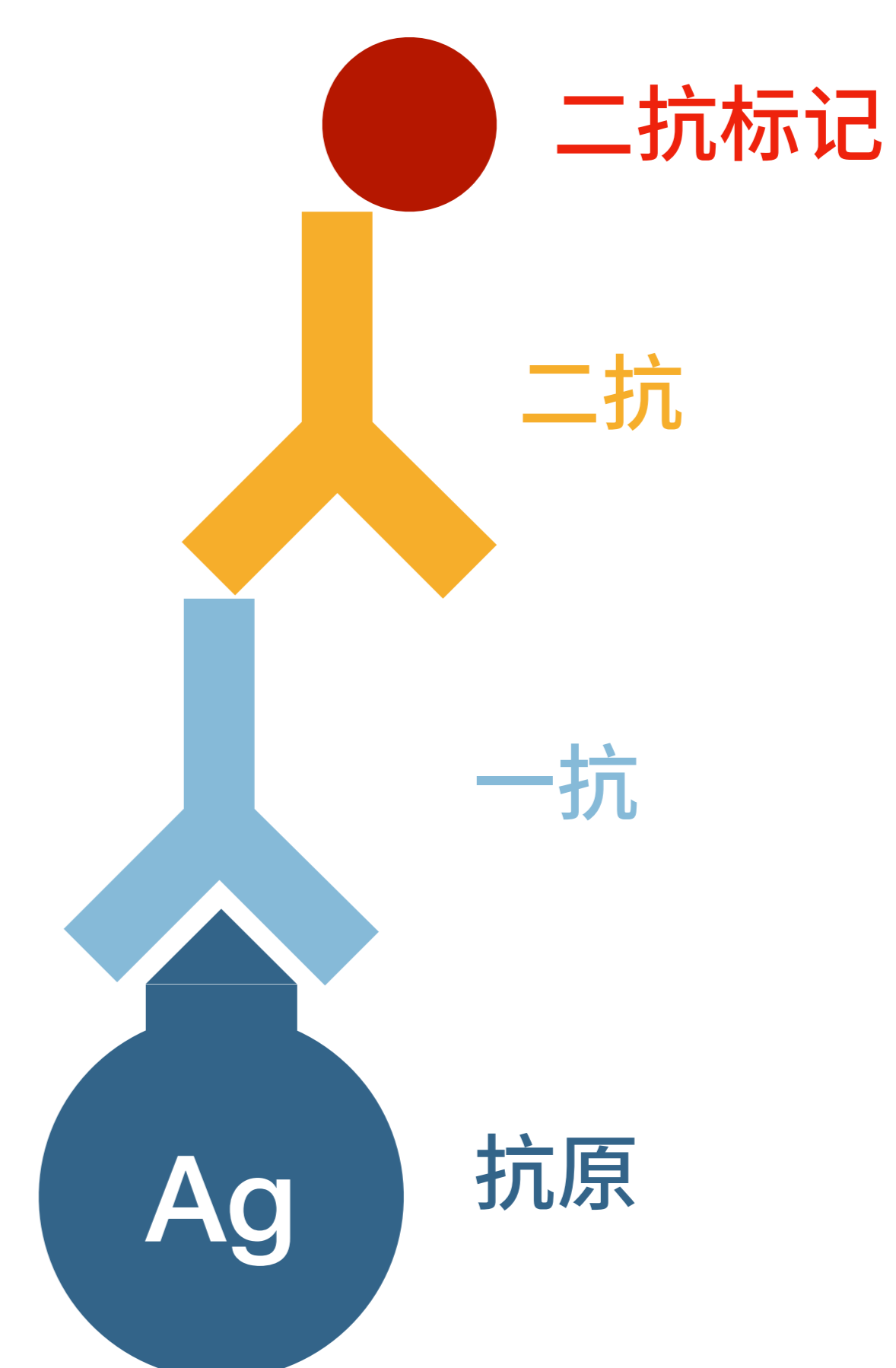
2000+ Cell-Based ELISA试剂盒



概念

第一抗体是能和抗原特异性识别和结合的，如蛋白检测常用的一抗。第二抗体是能和抗体结合，即抗体的抗体，主要用于检测抗体的存在。

体外蛋白检测时一抗是针对抗原的抗体，二抗是针对一抗的抗体。



二抗的选择原则

二抗的选择取决于一抗的种属来源、种类、分型，检测片段，实验目的及与检测仪器相匹配的不同标记。

区分一抗的种属来源。

二抗的宿主来源应与一抗不同，一抗的来源可以有多种，如兔子，小鼠，山羊，猴子，鸡.....二抗则选择xx抗兔子，xx抗小鼠，xx抗山羊...

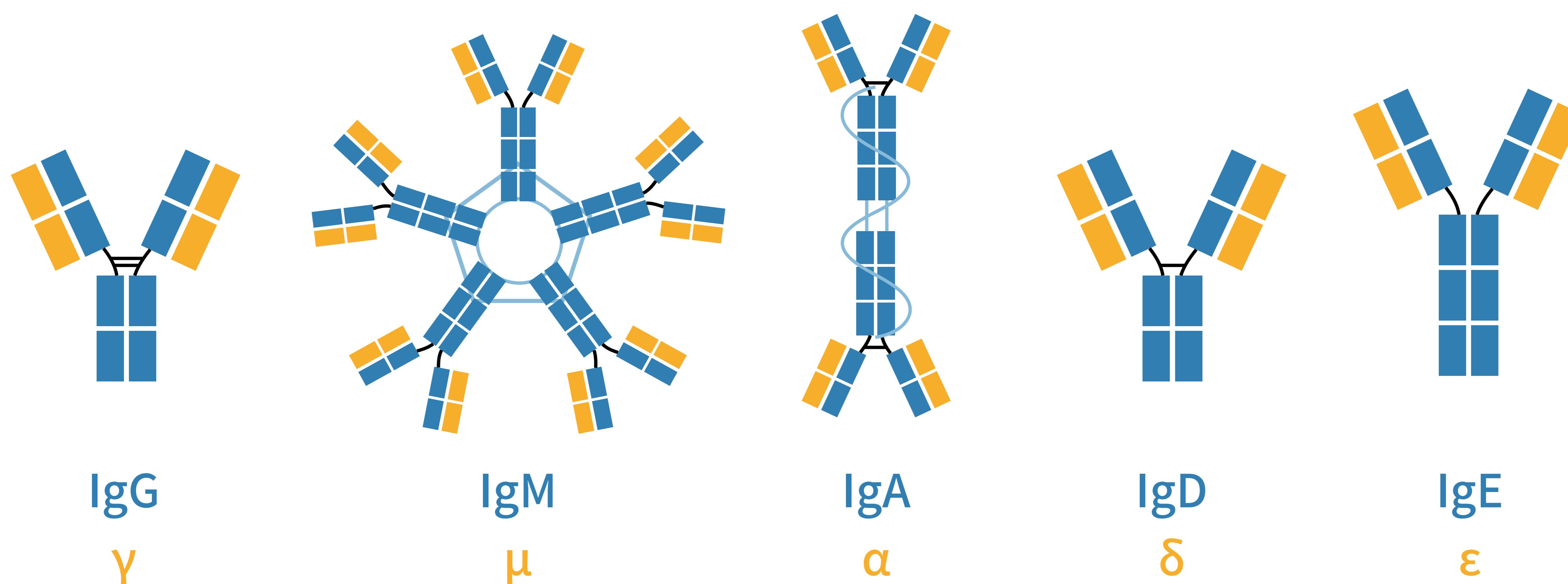
区分一抗的种类、分型和片段。

一抗因其重链恒定区的氨基酸组成和排列顺序不同，其抗原性也不同。据此，哺乳类可将抗体分为5类，即IgM、IgD、IgG、IgA和IgE，其相应的重链分别为 μ 链、 δ 链、 γ 链、 α 链和 ϵ 链。

不同类的Ig具有不同的特征，如链内和链间二硫键的数量和位置、结构域的数量及铰链区的长度等均不完全相同。即使是同一类的Ig，其铰链区氨基酸组成和重链二硫键的数量、位置也不同，据此又可将同类Ig分为不同的亚类。例如，人IgG可分为四个亚类，包括IgG1、IgG2、IgG3和IgG4；人IgA可分为IgA1和IgA2两个亚类。IgY普遍存在于鸟类、爬行动物和两栖类。

轻链可分为两种，分别为kappa(κ)链和lambda(λ)链。据此，可将Ig分为两型，即 κ 型和 λ 型。

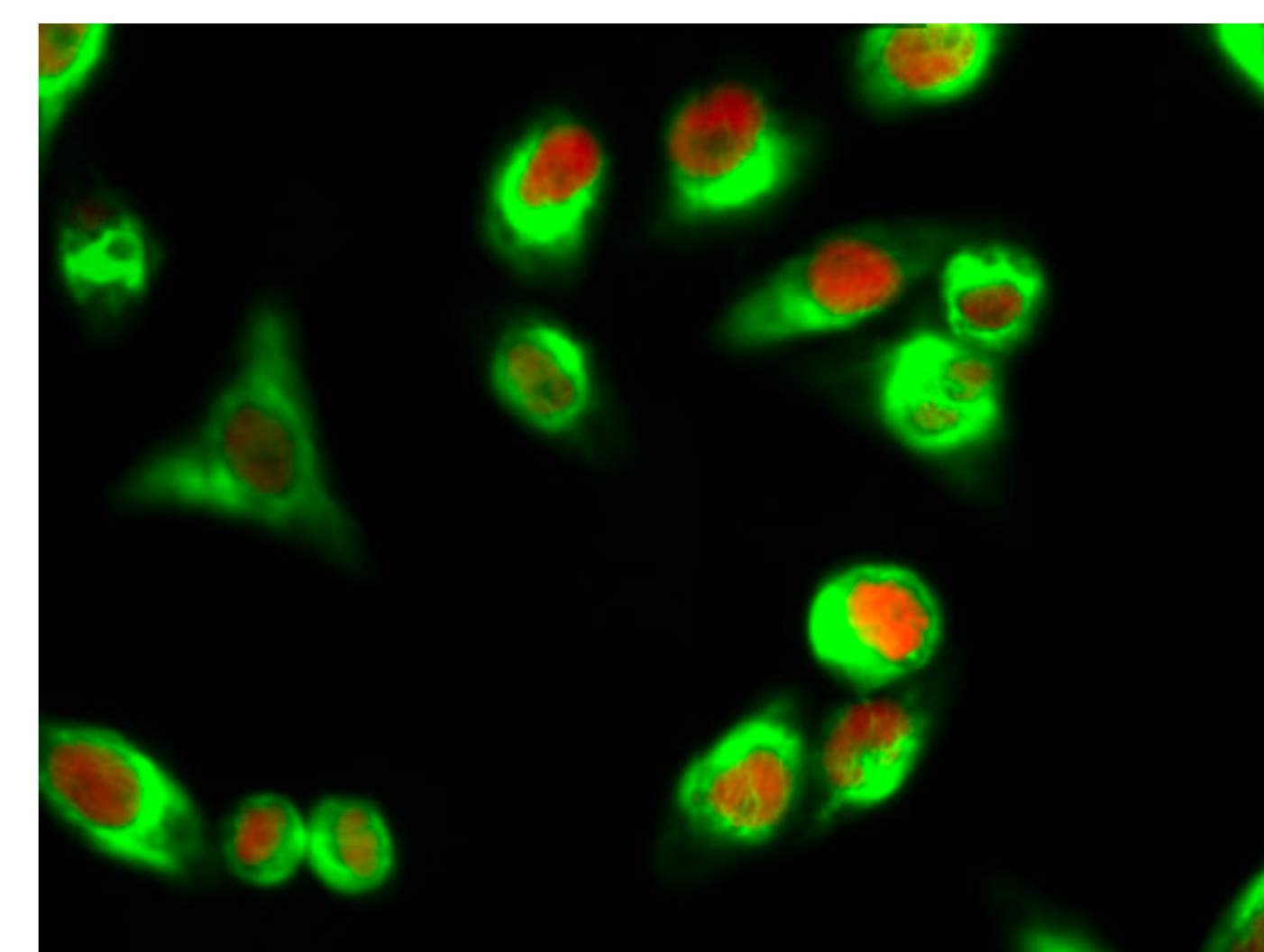
经木瓜蛋白酶水解的Ig是在铰链区二硫键连接的两条重链的近N端，可将Ig裂解为两个完全相同的Fab段和一个Fc段。



根据实验目的选择不同的标记

A. 荧光标记:

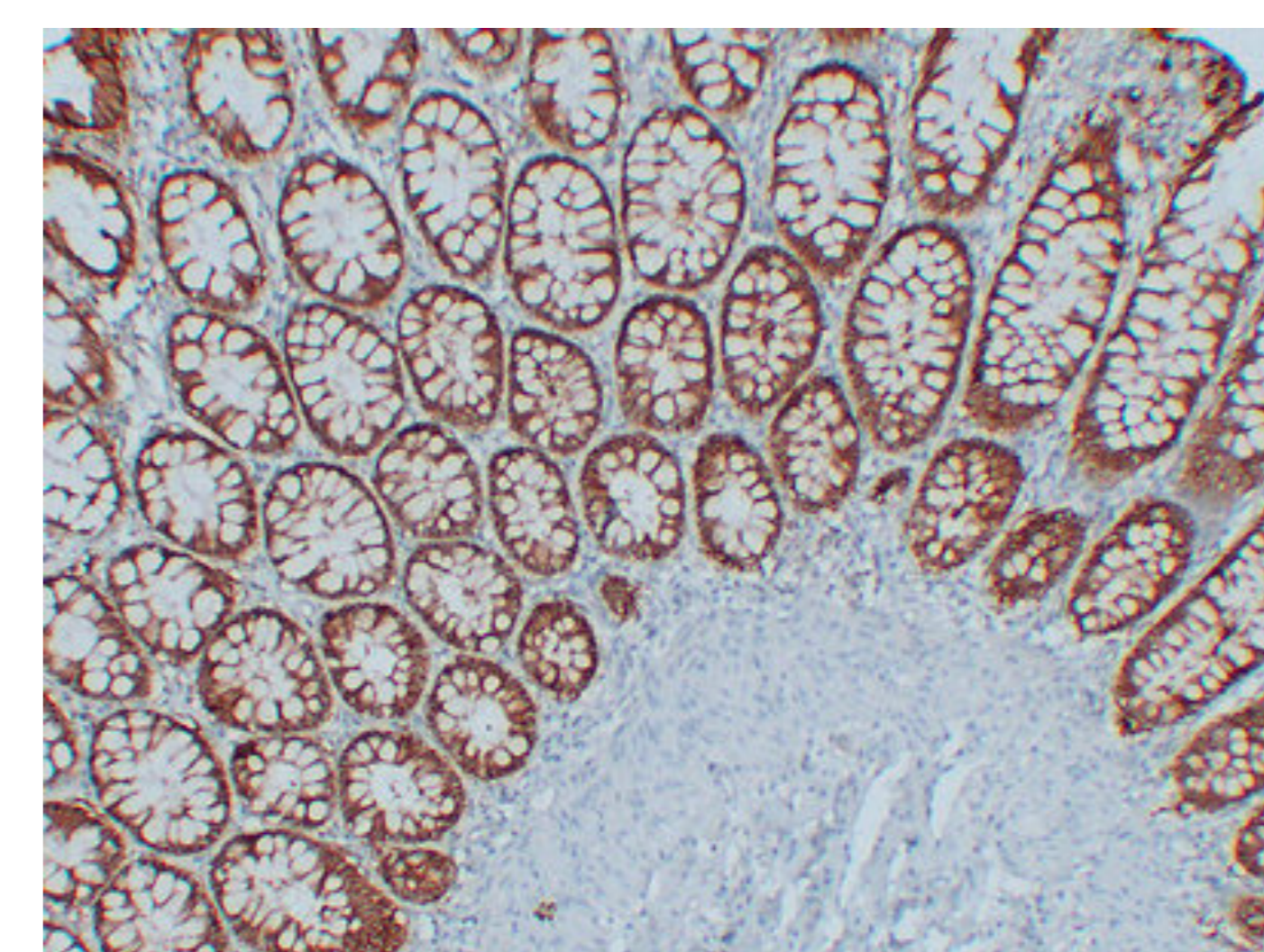
应用在免疫荧光技术 (IF) 上, 临床检验上用作对细菌, 病毒和寄生虫的检验及自身免疫病的诊断等; 在生命科学基础研究中用于细胞或组织中靶蛋白的检测, 实现对靶蛋白定性/相对定量的分析, 明确其亚细胞定位/共定位, 观察显微结构等。应用在流式细胞术 (FCM) 上, 对单细胞悬液进行快速定性, 定量分析和分选技术。不仅可以对细胞表面抗原进行检测, 也能对细胞内生物大分子进行检测, 能够在细胞水平上对相关疾病进行诊断和病程检测。



Immunofluorescence analysis of HeLa cell. 1. Cyclin A Polyclonal Antibody (red) was diluted at 1:200(4° overnight). β -actin Monoclonal Antibody (5B7) (green) was diluted at 1:200(4° overnight). 2. Goat Anti Rabbit Alexa Fluor 594 Catalog: RS3611 was diluted at 1:1000 (room temperature, 50min). Goat Anti Mouse Alexa Fluor 488 Catalog: RS3208 was diluted at 1:1000 (room temperature, 50min).

B. HRP标记:

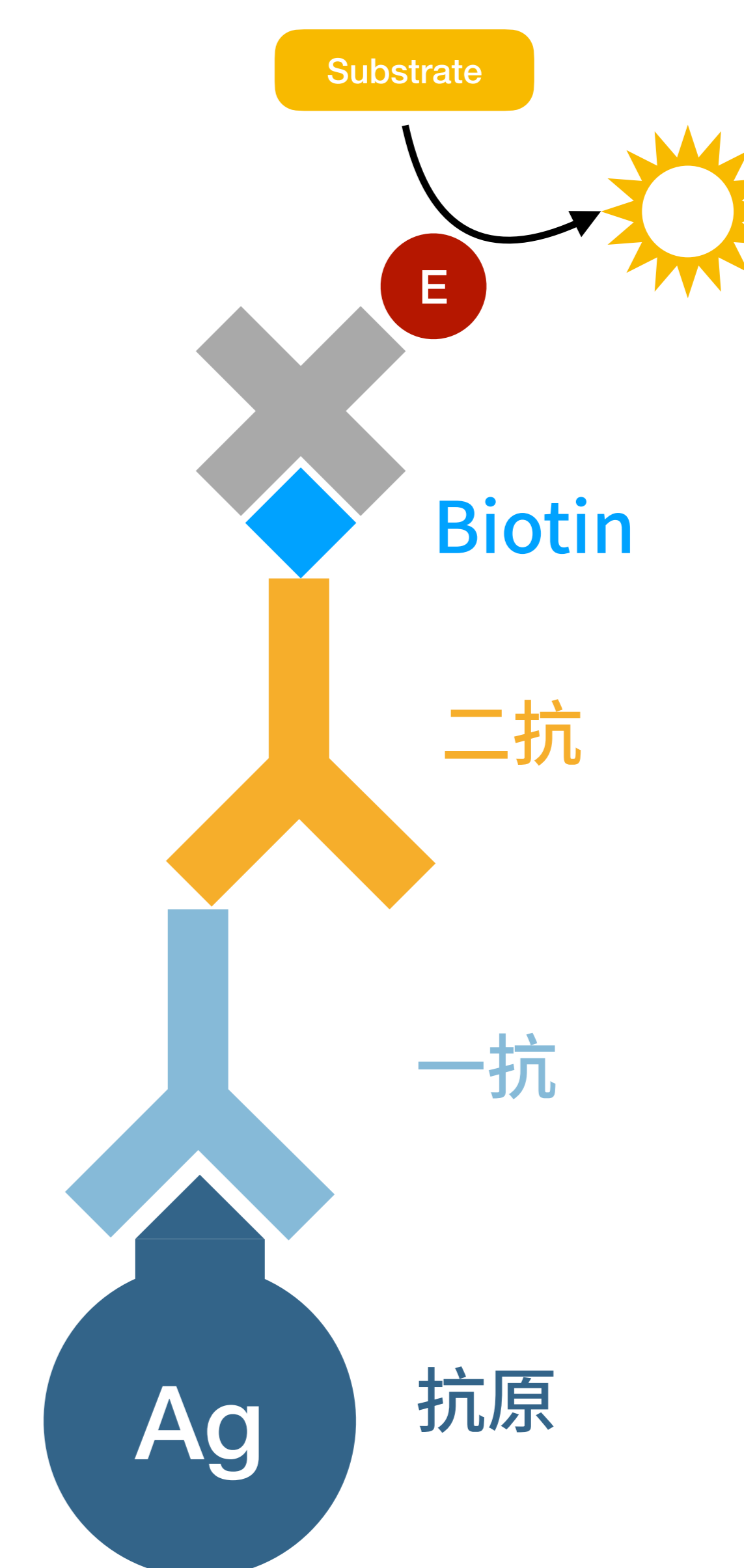
应用在免疫印迹法 (WB) 上, 将靶蛋白转移到膜上, 对蛋白进行着色, 实现对靶蛋白定性/相对定量的分析。应用在免疫组化 (IHC) 和免疫细胞化学 (ICC) 上, 通过化学反应显色来确定组织细胞内抗原 (多肽和蛋白质), 对其进行定位、定性及相对定量的研究。应用在酶联免疫吸附测定 (ELISA) 上, 将可溶性的抗原或抗体结合到聚苯乙烯等固相载体上, 利用抗原抗体结合专一性进行免疫反应的定性和定量检测方法。



Immunohistochemical analysis of paraffin-embedded Colon. 1. Antibody was diluted at 1:200(4° overnight). 2. Citric acid, pH6.0 was used for antigen retrieval. 3. Secondary antibody was diluted at 1:200 (room temperature, 30min).

C. Biotin标记:

生物素-亲和素系统几乎可与目前研究成功的各种标记物结合。生物素与亲和素之间高亲和力的牢固结合以及多级放大效应, 使BAS免疫标记和有关示踪分析更加灵敏。应用于WB, IHC-p, IF/ICC, ELISA等实现微量抗原、抗体定性、定量检测及定位观察研究的新技术。



D. AU标记:

胶体金是由氯金酸(HAuCl_4)在还原剂如白磷、抗坏血酸、枸橼酸钠、鞣酸等作用下, 可聚合成一定大小的金颗粒, 并由于静电作用成为一种稳定的胶体状态, 形成带负电的疏水胶溶液, 由于静电作用而成为稳定的胶体状态, 故称胶体金。是一种常用的标记技术, 以胶体金作为示踪标志物应用于抗原抗体的一种新型的免疫标记技术, 有其独特的优点。近年已在各种生物学研究中广泛使用。在临床使用的免疫印迹技术几乎都使用其标记。同时在流式、电镜、免疫、分子生物学以至生物芯片中都可能利用到。

常用荧光标记

Alexa Fluor 是美国分子探针公司开发的系列荧光染料，非常适合于激光共聚焦的系列荧光染料，其特色为激发峰值适合于激光器的谱线，发射峰比较窄，有利于多种荧光标记。荧光强度优于其他光谱特性类似的染料；耐光性更好，可允许更长时间来采集图像；PH耐受性好，荧光强度在广泛的PH范围内能维持高水平；水溶性良好，避免了Alexa Fluor偶联抗体沉淀和凝集，综合性能佳。

Name	Ex/Em	Color
Alexa Fluor 350	346/442	Blue
Alexa Fluor 405	401/421	Blue
Alexa Fluor 488	488/519	Green
Alexa Fluor 532	532/553	Yellow
Alexa Fluor 555	555/565	Yellow
Alexa Fluor 568	578/603	Red/Orange
Alexa Fluor 594	590/617	Red/Orange
Alexa Fluor 633	632/647	Red
Alexa Fluor 647	650/665	Red
Alexa Fluor 660	663/690	Near IR
Alexa Fluor 680	679/702	Near IR
Alexa Fluor 750	749/775	Near IR
Alexa Fluor 790	784/814	Near IR

Dylight 是一种新的荧光团，与传统的荧光团相比，其分子量相对较小，因此一个大分子上可以标记更多的Dylight，同时单个的Dylight荧光团，其荧光强度更强，特异性更好；Dylight对光更稳定，这意味着其具有更高的抗淬灭性，种类也很全，DyLight 350-800，多种荧光可选，综合性能佳。另外，Dylight还有适配Odyssey系统的近红外和远红外二抗，分别是Dylight 680和Dylight 800。

Name	Ex/Em	Color
DyLight 350	353/432	Blue
DyLight 405	400/420	Blue
DyLight 488	493/518	Green
DyLight 549	562/576	Yellow
DyLight 594	593/618	Red/Orange
DyLight 649	652/672	Red
DyLight 680	692/712	Near IR
DyLight 800	777/794	Near IR

花菁素Cy 即是一类荧光团，包括绿色的Cy2、黄红色的Cy3、红色的Cy5、近红外的Cy5.5等荧光染料，由于结构的稍微区别，其吸收和发射波长也有所区别。其水溶性和对光稳定性较强,荧光量子产率较高,对pH等环境不敏感，可用于多重染色。

Name	Ex/Em	Color
Cy2	489/506	Green
Cy3	550/570	Yellow
Cy3.5	581/594	Red/Orange
Cy5	650/670	Red
Cy5.5	675/694	Near IR
Cy7	743/767	Near IR

FITC 即异硫氰酸荧光素，是应用很广泛的荧光素。其呈现明亮的黄绿色荧光。其优势是分子量较小，每一个抗体可标记几个FITC分子，具有很好的对比度，其缺点是淬灭相对较快，在弱酸性条件下，FITC基团荧光更弱。

罗丹明 (Rhodamin) 及其衍生物则是带黄红色荧光的荧光素，包括TRITC、Texas Red等。罗丹明及其衍生物与FITC的绿色荧光对比鲜明，可配合用于双重标记或对比染色。其荧光淬灭慢，但是其荧光强度相对偏弱。

二抗常用配色推荐

多色搭配检测时，为了避免抗体之间交叉反应，非直标一抗要选择不同的种属来源，以避免荧光素之间的串色干扰。

Alexa Fluor 常用搭配

颜色数量	488	555	594	647
2色	✓	✓		
	✓		✓	
3色	✓		✓	✓
4色	✓	✓	✓	✓

Dylight 常用搭配

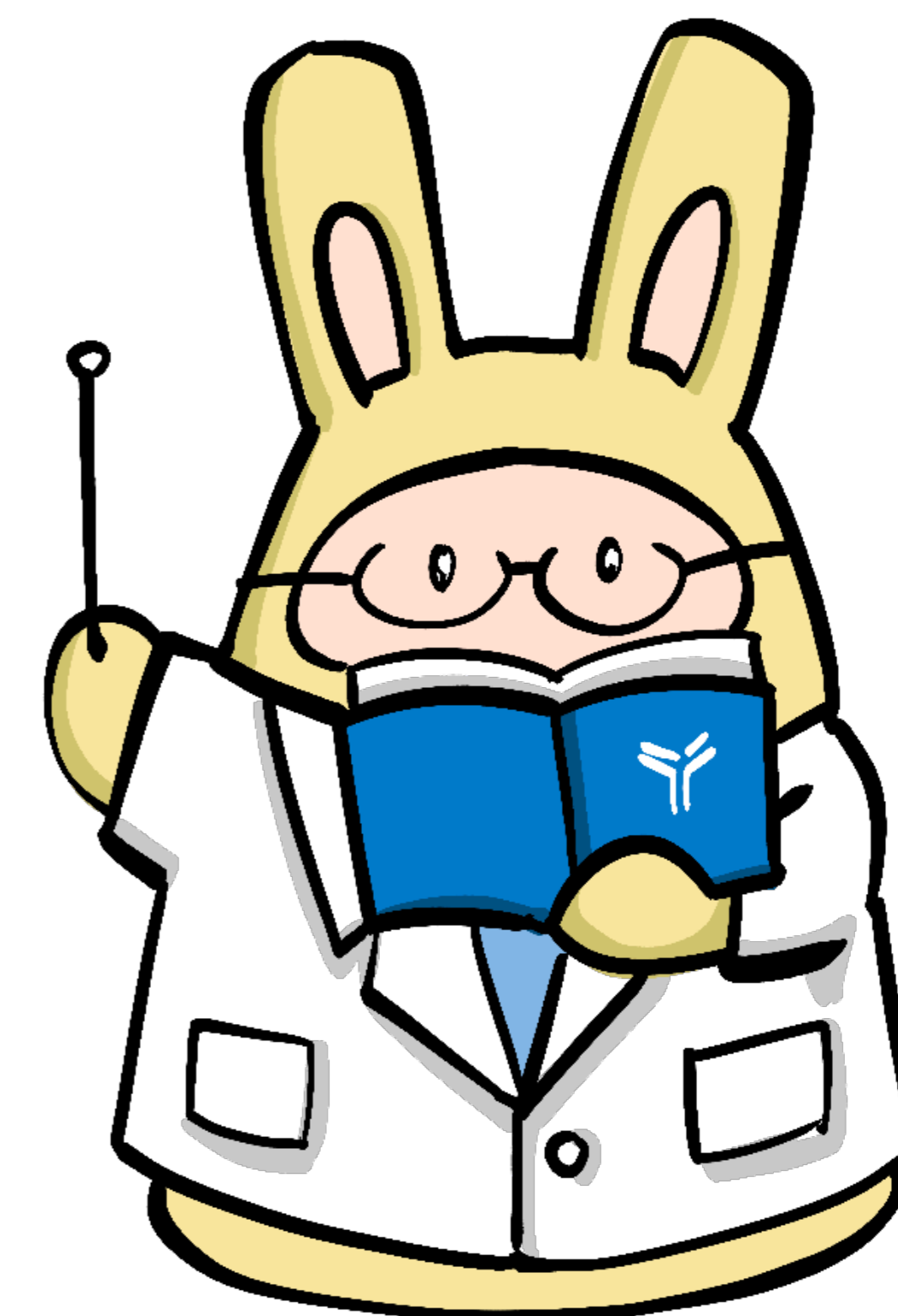
颜色数量	488	549	594	649
2色	✓	✓		
	✓		✓	
3色	✓		✓	✓
4色	✓	✓	✓	✓

荧光WB常用双色搭配

如DyLight 680/DyLight 800。(适配机型LI-COR Odyssey, Invitrogen iBright CL1000 & FL1000, Bio-Rad ChemiDoc MP等)

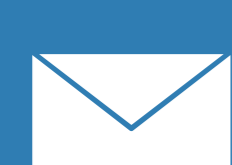
Immunoway 二抗优势

- ★ 特异性强，灵敏度高，低背景，高稀释比。
- ★ 种类1000+；
- ★ 一抗来源于Bovine,Cat,Chicken,Dog,Donkey,Duck,Goat,Guinea Pig, Horse,Human, Monkey, mouse, Pig, Rabbit, Rat, Sheep....均有对应二抗可选择；
- ★ 覆盖针对同一种属来源抗体不同的类别，分型和片段；
- ★ 多种标记，如HRP，Alexa Fluor系列，Dylight系列，FITC,AU，BIOTIN等供选择；
- ★ 满足多种实验需求，如WB,IHC-p,Elisa,IF/ICC,FCM等。



常用二抗列表 (现货)

产品名称	货号	种属	应用	规格
Goat anti Rabbit/Mouse polymer HRP, Ready to Use	RS0011	mouse Rabbit	IHC-p,IF(paraffin section)	1mL 10mL 100mL
Rabbit Anti Bovine IgG (H&L) - Alexa Fluor 594	RS3612	Bovine	Elisa,IF/ICC,FCM	100ul/1mL
HRP*Polyclonal Rabbit Anti Bovine IgG (h+l)	RS030224	Bovine	WB,IHC-p,IF/ICC,ELISA	100ul
Rabbit Anti Cat IgG(h+l)	RS020226	Cat	WB,IHC-p,IF/ICC,ELISA	100ul
BIOTIN*Polyclonal Goat Anti Chicken IgY (IgG)(h+l)	RS030835	Chicken	WB,IHC-p,IF/ICC,ELISA	100ul
HRP*Monoclonal mouse Anti Chicken IgY	RS030241	Chicken	WB,IHC-p,IF/ICC,ELISA	100ul
HRP*Polyclonal Rabbit Anti Chicken IgY (IgG)	RS030219	Chicken	WB,IHC-p,IF/ICC,ELISA	100ul
Rabbit Anti Dog IgG(h+l)	RS020211	Dog	WB,IHC-p,IF/ICC,ELISA	100ul
FITC*Polyclonal Rabbit Anti Duck IgY (IgG)	RS030627	Duck	WB,IHC-p,IF/ICC,ELISA	100ul
HRP*Monoclonal mouse Anti Duck IgY	RS030242	Duck	WB,IHC-p,IF/ICC,ELISA	100ul
HRP*Polyclonal Rabbit Anti Duck IgY (IgG)	RS030227	Duck	WB,IHC-p,IF/ICC,ELISA	100ul
Rabbit Anti Goat IgG (H&L) - Alexa Fluor 488	RS3218	Goat	Elisa,IF/ICC,FCM	100ul/1mL
Rabbit Anti Goat IgG (H&L) - Alexa Fluor 555	RS3418	Goat	Elisa,IF/ICC,FCM	100ul/1mL
Rabbit Anti Goat IgG (H&L) - Alexa Fluor 594	RS3618	Goat	Elisa,IF/ICC,FCM	100ul/1mL
Rabbit Anti Goat IgG (H&L) - Alexa Fluor 647	RS3818	Goat	Elisa,IF/ICC,FCM	100ul/1mL
Rabbit Anti Goat IgG (H&L) FITC	RS2323	Goat	IF/ICC,FCM	100ul/1mL
Rabbit Anti Goat IgG (H&L) HRP	RS2123	Goat	Elisa,WB,IHC,ICC	100ul/1mL
Rabbit Anti Sheep/Goat IgG	RS020231	Goat	WB,IHC-p,IF/ICC,ELISA	100ul
Dylight 549, Rabbit Anti Goat IgG	RS23330	Goat	IF/ICC,FCM	100ul/1mL
Dylight 649, Rabbit Anti Goat IgG	RS23630	Goat	IF/ICC,FCM	100ul/1mL
HRP*Polyclonal Rabbit Anti Goat IgG(h+l)	RS030221	Goat	WB,IHC-p,IF/ICC,ELISA	100ul
FITC*Polyclonal Rabbit Anti Guinea Pig IgG	RS030625	Guinea Pig	WB,IHC-p,IF/ICC,ELISA	100ul
HRP*Polyclonal Rabbit Anti Guinea Pig IgG	RS030225	Guinea Pig	WB,IHC-p,IF/ICC,ELISA	100ul
HRP*Polyclonal Rabbit Anti Horse IgG(h+l)	RS030220	Horse	WB,IHC-p,IF/ICC,ELISA	100ul
Goat Anti Human IgG Fab	RS020233	Human	WB,IHC-p,IF/ICC,ELISA	100ul
Goat Anti Human IgG FC	RS020220	Human	WB,IHC-p,IF/ICC,ELISA	100ul
Goat Anti Human IgG(h+l)	RS020227	Human	WB,IHC-p,IF/ICC,ELISA	100ul
Goat Anti Human IgM(u chain)	RS020213	Human	WB,IHC-p,IF/ICC,ELISA	100ul
HRP*Monoclonal mouse Anti Human IgG1	RS030248	Human	WB,IHC-p,IF/ICC,ELISA	100ul
HRP*Monoclonal mouse Anti Human IgG2	RS030245	Human	WB,IHC-p,IF/ICC,ELISA	100ul
HRP*Monoclonal mouse Anti Human IgG4	RS030247	Human	WB,IHC-p,IF/ICC,ELISA	100ul
HRP*Monoclonal mouse Anti Human Fab	RS030203	Human	WB,IHC-p,IF/ICC,ELISA	100ul
HRP*Polyclonal Goat Anti Human Ig	RS030250	Human	WB,IHC-p,IF/ICC,ELISA	100ul
HRP*Polyclonal Goat Anti Human IgG FC	RS030237	Human	WB,IHC-p,IF/ICC,ELISA	100ul
HRP*Polyclonal Goat Anti Human IgM(u chain)	RS030238	Human	WB,IHC-p,IF/ICC,ELISA	100ul
HRP*Polyclonal Rabbit Anti Human IgG(h+l)	RS030230	Human	WB,IHC-p,IF/ICC,ELISA	100ul
HRP*Polyclonal Rabbit Anti Human IgM(u chain)	RS030216	Human	WB,IHC-p,IF/ICC,ELISA	100ul



产品名称	货号	种属	应用	规格
Monoclonal mouse Anti Human Ig Kappa	RS010209	Human	WB,IHC-p,IF/ICC,ELISA	100ul
Monoclonal mouse Anti Human Ig Lambda	RS010210	Human	WB,IHC-p,IF/ICC,ELISA	100ul
Monoclonal mouse Anti Human IgG(Fab)	RS010203	Human	WB,IHC-p,IF/ICC,ELISA	100ul
Monoclonal mouse Anti Human IgG(FC)	RS010202	Human	WB,IHC-p,IF/ICC,ELISA	100ul
Monoclonal mouse Anti Human IgG1	RS010215	Human	WB,IHC-p,IF/ICC,ELISA	100ul
Monoclonal mouse Anti Human IgG2	RS010214	Human	WB,IHC-p,IF/ICC,ELISA	100ul
Monoclonal mouse Anti Human IgG4	RS010211	Human	WB,IHC-p,IF/ICC,ELISA	100ul
Monoclonal mouse Anti Human IgM	RS010204	Human	WB,IHC-p,IF/ICC,ELISA	100ul
Rabbit Anti Human IgG FC	RS020221	Human	WB,IHC-p,IF/ICC,ELISA	100ul
Rabbit Anti Human IgG(h+l)	RS020218	Human	WB,IHC-p,IF/ICC,ELISA	100ul
Rabbit Anti Human IgM (u chain)	RS020210	Human	WB,IHC-p,IF/ICC,ELISA	100ul
BIOTIN*Monoclonal mouse Anti Human IgA	RS030849	Human	WB,IHC-p,IF/ICC,ELISA	100ul
BIOTIN*Monoclonal mouse Anti Human Fab	RS030803	Human	WB,IHC-p,IF/ICC,ELISA	100ul
FITC*Polyclonal Goat Anti Human IgG(h+l)	RS030633	Human	WB,IHC-p,IF/ICC,ELISA	100ul
Mouse Anti Monkey IgG (H&L) HRP	RS2139	Monkey	Elisa,WB,IHC,ICC	100ul/1mL
Rabbit Anti Monkey IgG (H&L) - Alexa Fluor 532	RS3326	Monkey	Elisa,IF/ICC,FCM	100ul/1mL
Rabbit Anti Monkey IgG(h+l)	RS020217	Monkey	WB,IHC-p,IF/ICC,ELISA	100ul
HRP*Monoclonal mouse Anti Monkey IgG	RS030204	Monkey	WB,IHC-p,IF/ICC,ELISA	100ul
HRP*Polyclonal Rabbit Anti Monkey IgG(h+l)	RS030223	Monkey	WB,IHC-p,IF/ICC,ELISA	100ul
Goat Anti Mouse IgG (H&L) - Alexa Fluor 488	RS3208	mouse	Elisa,IF/ICC,FCM	100ul/1mL
Goat Anti Mouse IgG (H&L) - Alexa Fluor 555	RS3408	mouse	Elisa,IF/ICC,FCM	100ul/1mL
Goat Anti Mouse IgG (H&L) - Alexa Fluor 594	RS3608	mouse	Elisa,IF/ICC,FCM	100ul/1mL
Goat Anti Mouse IgG (H&L) - Alexa Fluor 647	RS3808	mouse	Elisa,IF/ICC,FCM	100ul/1mL
Goat Anti Mouse IgG (H&L) - Alexa Fluor 680	RS4008	mouse	IF/ICC,FCM,WB	100ul/1mL
Goat Anti Mouse IgG(H+L)	RS0007	mouse	WB,IHC,IF/ICC,ELISA	100ul 1mL
Rabbit Anti Mouse IgG (H&L) HRP	RS2131	mouse	Elisa,WB,IHC,ICC	100ul/1mL
BIOTIN* Goat Anti Mouse IgG(H+L)	RS0005	mouse	WB,IHC,IF/ICC,ELISA	100ul 1mL
DyLight 488, Goat Anti Mouse IgG	RS23210	mouse	IF/ICC,FCM	100ul/1mL
Dylight 549, Goat Anti Mouse IgG	RS23310	mouse	IF/ICC,FCM	100ul/1mL
Dylight 594, Goat Anti Mouse IgG	RS23410	mouse	IF/ICC,FCM	100ul/1mL
Dylight 649, Goat Anti Mouse IgG	RS23610	mouse	IF/ICC,FCM	100ul/1mL
Dylight 680, Goat Anti Mouse IgG	RS23710	mouse	IF/ICC,FCM,WB	100ul/1mL
Dylight 800, Goat Anti Mouse IgG	RS23910	mouse	IF/ICC,FCM,WB	100ul/1mL
FITC* Goat Anti Mouse IgG(H+L)	RS0003	mouse	IHC,IF/ICC,ELISA	100ul 1mL
HRP* Goat Anti Mouse IgG(H+L)	RS0001	mouse	WB,IHC-p,IF(P),ELISA	100ul 1mL
HRP*Polyclonal Goat Anti Mouse IgA	RS030211	mouse	WB,IHC-p,IF/ICC,ELISA	100ul
HRP*Polyclonal Goat Anti Mouse IgG1	RS030208	mouse	WB,IHC-p,IF/ICC,ELISA	100ul
HRP*Polyclonal Goat Anti Mouse IgG2a	RS030206	mouse	WB,IHC-p,IF/ICC,ELISA	100ul
HRP*Polyclonal Goat Anti Mouse IgM(u chain)	RS030210	mouse	WB,IHC-p,IF/ICC,ELISA	100ul
HRP*Polyclonal Rabbit Anti Mouse IgG(h+l)	RS030213	mouse	WB,IHC-p,IF/ICC,ELISA	100ul
FITC*Polyclonal Rabbit Anti Pig IgG(h+l)	RS030618	Pig	WB,IHC-p,IF/ICC,ELISA	100ul
HRP*Monoclonal mouse Anti Pig IgG	RS030232	Pig	WB,IHC-p,IF/ICC,ELISA	100ul



产品名称	货号	种属	应用	规格
Goat Anti Rabbit IgG (H&L) - Alexa Fluor 488	RS3211	Rabbit	Elisa,IF/ICC,FCM	100ul/1mL
Goat Anti Rabbit IgG (H&L) - Alexa Fluor 555	RS3411	Rabbit	Elisa,IF/ICC,FCM	100ul/1mL
Goat Anti Rabbit IgG (H&L) - Alexa Fluor 594	RS3611	Rabbit	Elisa,IF/ICC,FCM	100ul/1mL
Goat Anti Rabbit IgG (H&L) - Alexa Fluor 647	RS3811	Rabbit	Elisa,IF/ICC,FCM	100ul/1mL
Goat Anti Rabbit IgG (H&L) - Alexa Fluor 680	RS4011	Rabbit	IF/ICC,FCM,WB	100ul/1mL
HRP* Goat Anti Rabbit IgG(H+L)	RS0002	Rabbit	WB,IHC-p,IF(P),ELISA	100ul 1mL
BIOTIN* Goat Anti Rabbit IgG(H+L)	RS0006	Rabbit	WB,IHC,IF/ICC,ELISA	100ul 1mL
Dylight 488, Goat Anti Rabbit IgG	RS23220	Rabbit	IF/ICC,FCM	100ul/1mL
Dylight 549, Goat Anti Rabbit IgG	RS23320	Rabbit	IF/ICC,FCM	100ul/1mL
Dylight 594, Goat Anti Rabbit IgG	RS23420	Rabbit	IF/ICC,FCM	100ul/1mL
Dylight 649, Goat Anti Rabbit IgG	RS23620	Rabbit	IF/ICC,FCM	100ul/1mL
Dylight 680, Goat Anti Rabbit IgG	RS23720	Rabbit	IF/ICC,FCM,WB	100ul/1mL
Dylight 800, Goat Anti Rabbit IgG	RS23920	Rabbit	IF/ICC,FCM,WB	100ul/1mL
FITC* Goat Anti Rabbit IgG(H+L)	RS0004	Rabbit	WB,IHC,IF/ICC,ELISA	100ul 1mL
Rabbit Anti Rat IgG (H&L) - Alexa Fluor 488	RS3229	Rat	Elisa,IF/ICC,FCM	100ul/1mL
Rabbit Anti Rat IgG (H&L) - Alexa Fluor 594	RS3629	Rat	Elisa,IF/ICC,FCM	100ul/1mL
Rabbit Anti Rat IgG (H&L) HRP	RS2133	Rat	Elisa,WB,IHC,ICC	100ul/1mL
Rabbit Anti Rat IgG(h+l)	RS020224	Rat	WB,IHC-p,IF/ICC,ELISA	100ul
Dylight 488, Goat Anti Rat IgG	RS23240	Rat	IF/ICC,FCM	100ul/1mL
Dylight 549, Goat Anti Rat IgG	RS23340	Rat	IF/ICC,FCM	100ul/1mL
Dylight 594, Goat Anti Rat IgG	RS23440	Rat	IF/ICC,FCM	100ul/1mL
Dylight 649, Goat Anti Rat IgG	RS23640	Rat	IF/ICC,FCM	100ul/1mL
FITC*Polyclonal Rabbit Anti Rat IgG(h+l)	RS030626	Rat	WB,IHC-p,IF/ICC,ELISA	100ul
HRP*Polyclonal Rabbit Anti Rat IgG(h+l)	RS030226	Rat	WB,IHC-p,IF/ICC,ELISA	100ul
BIOTIN*Polyclonal Rabbit Anti Sheep IgG(h+l)	RS030831	Sheep	WB,IHC-p,IF/ICC,ELISA	100ul
HRP*Polyclonal Rabbit Anti Sheep IgG(h+l)	RS030231	Sheep	WB,IHC-p,IF/ICC,ELISA	100ul
HRP*Polyclonal Goat Anti Tree shrew IgG(H+L)	RS030251	Treeshw	WB,IHC-p,IF/ICC,ELISA	100ul
Monoclonal mouse Anti HBsAg	RS010101	HBsAg	WB,IHC-p,IF/ICC,ELISA	100ul
Polyclonal Goat Anti HBsAg	RS020108	HBsAg	WB,IHC-p,IF/ICC,ELISA	100ul
HRP*Monoclonal mouse Anti His	RS030104	His	WB,IHC-p,IF/ICC,ELISA	100ul
Monoclonal mouse Anti Hiv(P24)	RS010105	Hiv	WB,IHC-p,IF/ICC,ELISA	100ul
Polyclonal Rabbit Anti OVA	RS020105	OVA	WB,IHC-p,IF/ICC,ELISA	100ul
Monoclonal mouse Anti Zearalenone	RS010111	Zearalenone	WB,IHC-p,IF/ICC,ELISA	100ul

小鼠靶标二抗精选

产品名称	货号	种属	应用	规格
Goat Anti Mouse IgG (H&L) - Alexa Fluor 350	RS3008	mouse	Elisa,IF/ICC,FCM	100ul/1mL
Goat Anti Mouse IgG (H&L) - Alexa Fluor 405	RS3108	mouse	Elisa,IF/ICC,FCM	100ul/1mL
Goat Anti Mouse IgG (H&L) - Alexa Fluor 488	RS3208	mouse	Elisa,IF/ICC,FCM	100ul/1mL
Goat Anti Mouse IgG (H&L) - Alexa Fluor 532	RS3308	mouse	Elisa,IF/ICC,FCM	100ul/1mL
Goat Anti Mouse IgG (H&L) - Alexa Fluor 555	RS3408	mouse	Elisa,IF/ICC,FCM	100ul/1mL
Goat Anti Mouse IgG (H&L) - Alexa Fluor 568	RS3508	mouse	Elisa,IF/ICC,FCM	100ul/1mL
Goat Anti Mouse IgG (H&L) - Alexa Fluor 594	RS3608	mouse	Elisa,IF/ICC,FCM	100ul/1mL
Goat Anti Mouse IgG (H&L) - Alexa Fluor 633	RS3708	mouse	Elisa,IF/ICC,FCM	100ul/1mL
Goat Anti Mouse IgG (H&L) - Alexa Fluor 647	RS3808	mouse	Elisa,IF/ICC,FCM	100ul/1mL
Goat Anti Mouse IgG (H&L) - Alexa Fluor 660	RS3908	mouse	Elisa,IF/ICC,FCM	100ul/1mL
Goat Anti Mouse IgG (H&L) - Alexa Fluor 680	RS4008	mouse	IF/ICC,FCM,WB	100ul/1mL
Goat Anti Mouse IgG (H&L) - Alexa Fluor 750	RS4108	mouse	Elisa,IF/ICC,FCM	100ul/1mL
Goat Anti Mouse IgG (H&L) - Alexa Fluor 790	RS4208	mouse	Elisa,IF/ICC,FCM	100ul/1mL
Goat Anti Mouse IgG (H&L) Biotin	RS2208	mouse	Elisa,WB,IHC,ICC	100ul/1mL
Goat Anti Mouse IgG (H&L) FITC	RS2308	mouse	IF/ICC,FCM	100ul/1mL
Goat Anti Mouse IgG (H&L) HRP	RS2108	mouse	Elisa,WB,IHC,ICC	100ul/1mL
Goat Anti Mouse IgG(H+L)	RS0007	mouse	WB,IHC,IF/ICC,ELISA	100ul 1mL
Goat Anti Mouse IgM (u chain)	RS020206	mouse	WB,IHC-p,IF/ICC,ELISA	100ul
Goat Anti Mouse IgM mu chain - Alexa Fluor 350	RS3009	mouse	Elisa,IF/ICC,FCM	100ul/1mL
Goat Anti Mouse IgM mu chain - Alexa Fluor 405	RS3109	mouse	Elisa,IF/ICC,FCM	100ul/1mL
Goat Anti Mouse IgM mu chain - Alexa Fluor 488	RS3209	mouse	Elisa,IF/ICC,FCM	100ul/1mL
Goat Anti Mouse IgM mu chain - Alexa Fluor 532	RS3309	mouse	Elisa,IF/ICC,FCM	100ul/1mL
Goat Anti Mouse IgM mu chain - Alexa Fluor 555	RS3409	mouse	Elisa,IF/ICC,FCM	100ul/1mL
Goat Anti Mouse IgM mu chain - Alexa Fluor 568	RS3509	mouse	Elisa,IF/ICC,FCM	100ul/1mL
Goat Anti Mouse IgM mu chain - Alexa Fluor 594	RS3609	mouse	Elisa,IF/ICC,FCM	100ul/1mL
Goat Anti Mouse IgM mu chain - Alexa Fluor 633	RS3709	mouse	Elisa,IF/ICC,FCM	100ul/1mL
Goat Anti Mouse IgM mu chain - Alexa Fluor 647	RS3809	mouse	Elisa,IF/ICC,FCM	100ul/1mL
Goat Anti Mouse IgM mu chain - Alexa Fluor 660	RS3909	mouse	Elisa,IF/ICC,FCM	100ul/1mL
Goat Anti Mouse IgM mu chain - Alexa Fluor 680	RS4009	mouse	IF/ICC,FCM,WB	100ul/1mL
Goat Anti Mouse IgM mu chain - Alexa Fluor 750	RS4109	mouse	Elisa,IF/ICC,FCM	100ul/1mL
Goat Anti Mouse IgM mu chain - Alexa Fluor 790	RS4209	mouse	Elisa,IF/ICC,FCM	100ul/1mL



产品名称	货号	种属	应用	规格
Goat Anti-Mouse IgG (H&L) - Cy3	RS4308	mouse	IF/ICC,FCM	100ul 1mL
Goat Anti-Mouse IgG (H&L) - Cy5	RS4408	mouse	IF/ICC,FCM	100ul 1mL
Goat Anti-Mouse IgG (H&L) - Cy5.5	RS4508	mouse	IF/ICC,FCM	100ul 1mL
Goat Anti-Mouse IgG (H&L) - Cy7	RS4608	mouse	IF/ICC,FCM	100ul 1mL
Goat Anti-Mouse IgG (H&L) - Texas Red	RS2708	mouse	IF/ICC,FCM	100ul 1mL
Goat Anti-Mouse IgM mu chain - Cy3	RS4309	mouse	IF/ICC,FCM	100ul 1mL
Goat Anti-Mouse IgM mu chain - Cy5	RS4409	mouse	IF/ICC,FCM	100ul 1mL
Goat Anti-Mouse IgM mu chain - Cy5.5	RS4509	mouse	IF/ICC,FCM	100ul 1mL
Goat Anti-Mouse IgM mu chain - Cy7	RS4609	mouse	IF/ICC,FCM	100ul 1mL
Goat Anti-Mouse IgM mu chain - Texas Red	RS2709	mouse	IF/ICC,FCM	100ul 1mL
Rabbit Anti mouse IgG(h+l)	RS020209	mouse	WB,IHC-p,IF/ICC,ELISA	100ul
Rabbit Anti Mouse IgG (H&L) - Alexa Fluor 350	RS3027	mouse	Elisa,IF/ICC,FCM	100ul/1mL
Rabbit Anti Mouse IgG (H&L) - Alexa Fluor 405	RS3127	mouse	Elisa,IF/ICC,FCM	100ul/1mL
Rabbit Anti Mouse IgG (H&L) - Alexa Fluor 488	RS3227	mouse	Elisa,IF/ICC,FCM	100ul/1mL
Rabbit Anti Mouse IgG (H&L) - Alexa Fluor 532	RS3327	mouse	Elisa,IF/ICC,FCM	100ul/1mL
Rabbit Anti Mouse IgG (H&L) - Alexa Fluor 555	RS3427	mouse	Elisa,IF/ICC,FCM	100ul/1mL
Rabbit Anti Mouse IgG (H&L) - Alexa Fluor 568	RS3527	mouse	Elisa,IF/ICC,FCM	100ul/1mL
Rabbit Anti Mouse IgG (H&L) - Alexa Fluor 594	RS3627	mouse	Elisa,IF/ICC,FCM	100ul/1mL
Rabbit Anti Mouse IgG (H&L) - Alexa Fluor 633	RS3727	mouse	Elisa,IF/ICC,FCM	100ul/1mL
Rabbit Anti Mouse IgG (H&L) - Alexa Fluor 647	RS3827	mouse	Elisa,IF/ICC,FCM	100ul/1mL
Rabbit Anti Mouse IgG (H&L) - Alexa Fluor 660	RS3927	mouse	Elisa,IF/ICC,FCM	100ul/1mL
Rabbit Anti Mouse IgG (H&L) - Alexa Fluor 680	RS4027	mouse	IF/ICC,FCM,WB	100ul/1mL
Rabbit Anti Mouse IgG (H&L) - Alexa Fluor 750	RS4127	mouse	Elisa,IF/ICC,FCM	100ul/1mL
Rabbit Anti Mouse IgG (H&L) - Alexa Fluor 790	RS4227	mouse	Elisa,IF/ICC,FCM	100ul/1mL
Rabbit Anti Mouse IgG (H&L) Biotin	RS2231	mouse	Elisa,WB,IHC,ICC	100ul/1mL
Rabbit Anti Mouse IgG (H&L) FITC	RS2331	mouse	IF/ICC,FCM	100ul/1mL
Rabbit Anti Mouse IgG (H&L) HRP	RS2131	mouse	Elisa,WB,IHC,ICC	100ul/1mL
Rabbit Anti-Mouse IgG (H&L) - Cy3	RS4327	mouse	IF/ICC,FCM	100ul 1mL
Rabbit Anti-Mouse IgG (H&L) - Cy5	RS4427	mouse	IF/ICC,FCM	100ul 1mL
Rabbit Anti-Mouse IgG (H&L) - Cy5.5	RS4527	mouse	IF/ICC,FCM	100ul 1mL
Rabbit Anti-Mouse IgG (H&L) - Cy7	RS4627	mouse	IF/ICC,FCM	100ul 1mL
Rabbit Anti-Mouse IgG (H&L) - Texas Red	RS2727	mouse	IF/ICC,FCM	100ul 1mL



产品名称	货号	种属	应用	规格
AU*Polyclonal Goat Anti Mouse IgA	RS030411	mouse	WB,IHC-p,IF/ICC,ELISA	100ul
AU*Polyclonal Goat Anti Mouse IgG H+L	RS030405	mouse	WB,IHC-p,IF/ICC,ELISA	100ul
AU*Polyclonal Goat Anti Mouse IgG1	RS030408	mouse	WB,IHC-p,IF/ICC,ELISA	100ul
AU*Polyclonal Goat Anti Mouse IgG2a	RS030406	mouse	WB,IHC-p,IF/ICC,ELISA	100ul
AU*Polyclonal Goat Anti Mouse IgG2b	RS030407	mouse	WB,IHC-p,IF/ICC,ELISA	100ul
AU*Polyclonal Goat Anti Mouse IgG3	RS030409	mouse	WB,IHC-p,IF/ICC,ELISA	100ul
AU*Polyclonal Goat Anti Mouse IgM(u chain)	RS030410	mouse	WB,IHC-p,IF/ICC,ELISA	100ul
AU*Polyclonal Goat Anti Mouse Kappa	RS030414	mouse	WB,IHC-p,IF/ICC,ELISA	100ul
AU*Polyclonal Goat Anti Mouse Lambda	RS030415	mouse	WB,IHC-p,IF/ICC,ELISA	100ul
AU*Polyclonal Rabbit Anti Mouse IgG(h+l)	RS030413	mouse	WB,IHC-p,IF/ICC,ELISA	100ul
BIOTIN* Goat Anti Mouse IgG(H+L)	RS0005	mouse	WB,IHC,IF/ICC,ELISA	100ul 1mL
BIOTIN*Polyclonal Goat Anti Mouse IgA	RS030811	mouse	WB,IHC-p,IF/ICC,ELISA	100ul
BIOTIN*Polyclonal Goat Anti Mouse IgG1	RS030808	mouse	WB,IHC-p,IF/ICC,ELISA	100ul
BIOTIN*Polyclonal Goat Anti Mouse IgG2a	RS030806	mouse	WB,IHC-p,IF/ICC,ELISA	100ul
BIOTIN*Polyclonal Goat Anti Mouse IgG2b	RS030807	mouse	WB,IHC-p,IF/ICC,ELISA	100ul
BIOTIN*Polyclonal Goat Anti Mouse IgG3	RS030809	mouse	WB,IHC-p,IF/ICC,ELISA	100ul
BIOTIN*Polyclonal Goat Anti Mouse IgM(u chain)	RS030810	mouse	WB,IHC-p,IF/ICC,ELISA	100ul
BIOTIN*Polyclonal Goat Anti Mouse Kappa	RS030814	mouse	WB,IHC-p,IF/ICC,ELISA	100ul
BIOTIN*Polyclonal Goat Anti Mouse Lambda	RS030815	mouse	WB,IHC-p,IF/ICC,ELISA	100ul
BIOTIN*Polyclonal Rabbit Anti Mouse IgG(h+l)	RS030813	mouse	WB,IHC-p,IF/ICC,ELISA	100ul
DyLight 350, Goat Anti Mouse IgG	RS23010	mouse	IF/ICC,FCM	100ul/1mL
DyLight 405, Goat Anti Mouse IgG	RS23110	mouse	IF/ICC,FCM	100ul/1mL
DyLight 488, Goat Anti Mouse IgG	RS23210	mouse	IF/ICC,FCM	100ul/1mL
Dylight 549, Goat Anti Mouse IgG	RS23310	mouse	IF/ICC,FCM	100ul/1mL
Dylight 594, Goat Anti Mouse IgG	RS23410	mouse	IF/ICC,FCM	100ul/1mL
Dylight 649, Goat Anti Mouse IgG	RS23610	mouse	IF/ICC,FCM	100ul/1mL
Dylight 680, Goat Anti Mouse IgG	RS23710	mouse	IF/ICC,FCM,WB	100ul/1mL
Dylight 800, Goat Anti Mouse IgG	RS23910	mouse	IF/ICC,FCM,WB	100ul/1mL



产品名称	货号	种属	应用	规格
FITC* Goat Anti Mouse IgG(H+L)	RS0003	mouse	IHC,IF/ICC,ELISA	100ul 1mL
FITC*Polyclonal Goat Anti Mouse IgA	RS030611	mouse	WB,IHC-p,IF/ICC,ELISA	100ul
FITC*Polyclonal Goat Anti Mouse IgG1	RS030608	mouse	WB,IHC-p,IF/ICC,ELISA	100ul
FITC*Polyclonal Goat Anti Mouse IgG2a	RS030606	mouse	WB,IHC-p,IF/ICC,ELISA	100ul
FITC*Polyclonal Goat Anti Mouse IgG2b	RS030607	mouse	WB,IHC-p,IF/ICC,ELISA	100ul
FITC*Polyclonal Goat Anti Mouse IgG3	RS030609	mouse	WB,IHC-p,IF/ICC,ELISA	100ul
FITC*Polyclonal Goat Anti Mouse IgM(u chain)	RS030610	mouse	WB,IHC-p,IF/ICC,ELISA	100ul
FITC*Polyclonal Goat Anti Mouse Kappa	RS030614	mouse	WB,IHC-p,IF/ICC,ELISA	100ul
FITC*Polyclonal Goat Anti Mouse Lambda	RS030615	mouse	WB,IHC-p,IF/ICC,ELISA	100ul
FITC*Polyclonal Rabbit Anti Mouse IgG(h+l)	RS030613	mouse	WB,IHC-p,IF/ICC,ELISA	100ul
HRP* Goat Anti Mouse IgG(H+L)	RS0001	mouse	WB,IHC-p,IF(paraffin section),ELISA	100ul 1mL
HRP*Polyclonal Goat Anti Mouse IgA	RS030211	mouse	WB,IHC-p,IF/ICC,ELISA	100ul
HRP*Polyclonal Goat Anti Mouse IgG1	RS030208	mouse	WB,IHC-p,IF/ICC,ELISA	100ul
HRP*Polyclonal Goat Anti Mouse IgG2a	RS030206	mouse	WB,IHC-p,IF/ICC,ELISA	100ul
HRP*Polyclonal Goat Anti Mouse IgG2b	RS030207	mouse	WB,IHC-p,IF/ICC,ELISA	100ul
HRP*Polyclonal Goat Anti Mouse IgG3	RS030209	mouse	WB,IHC-p,IF/ICC,ELISA	100ul
HRP*Polyclonal Goat Anti Mouse IgM(u chain)	RS030210	mouse	WB,IHC-p,IF/ICC,ELISA	100ul
HRP*Polyclonal Goat Anti Mouse Kappa	RS030214	mouse	WB,IHC-p,IF/ICC,ELISA	100ul
HRP*Polyclonal Goat Anti Mouse Lambda	RS030215	mouse	WB,IHC-p,IF/ICC,ELISA	100ul
HRP*Polyclonal Rabbit Anti Mouse IgG(h+l)	RS030213	mouse	WB,IHC-p,IF/ICC,ELISA	100ul

微信扫描下方二维码
查询更多二抗产品



常用内参抗体列表

细胞器	名称	货号	产品名称	种属	应用	大小KD
胞浆	beta actin	YT0099	Actin β pAb	H,M,R,Fish	IF,WB,IHC-p,ELISA	42
		YM3028	β -actin mAb(5B7)	H,R,M,Mk,Dg,Ch,Hm,Rb,Insect	IF,WB,IHC-p	42
		YM3121	β -actin mAb	Zebrafish	WB	42
		YM33038	Actin beta rabbit pAb	Drosophilidae	WB	42
		YM33033	Actin beta rabbit pAb	C.elegans	WB	42
		YM3034	Plant actin mAb(Q30)	Various Plants	WB	42
	GAPDH	YT5052	GAPDH pAb	H,M,R	WB,IHC-p,ELISA	36
		YM3029	GAPDH mAb(2B8)	H,R,M,Mk,Dg,Ch,Hm,Rb,Pig,Sh,Insect, Yeast	WB,IF,IHC-p	36
		YM33039	GAPDH rabbit pAb	Drosophilidae	WB	36
		YM33034	GAPDH rabbit pAb	C.elegans	WB	36
	beta-tubulin	YT4780	Tubulin β pAb	H,M,R,Pig,Cow	WB,IHC-p,IF,ELISA	50
		YM3139	β -tubulin mAb(Mix)	H,R,M,Mk,Dg,Ch,Hm, Rb	WB,IHC-p,IP	50
		YM33036	Tubulin beta rabbit pAb	C.elegans	WB	50
胞核	lamin B1	YT5180	Lamin B1 pAb	H,M,R	WB,IHC-p,ELISA	55
		YM3036	Lamin B1 mAb(7C11)	H,R,M	WB,IHC-p,IF,IP	55
	PCNA	YT3617	PCNA pAb	H,M,R,Mk	WB,IHC-p,ELISA	36
		YM3031	PCNA mAb(12D10)	H,R,M	WB,IF,IHC-p	36
	histone H3	YT2163	Histone H3 pAb	H,M,R	WB,IHC-p,IF,ELISA	15
		YM3038	Histone H3 mAb(1G1)	H,M,R,Yeast	WB,IHC-p,IF,IP	15
YM33037		Histone H3 rabbit pAb	H,M,R Cel. Yeast	WB,IP	15	
胞膜	Na ⁺ /K ⁺ -ATPase α 1	YT2971	Na ⁺ /K ⁺ -ATPase α 1 pAb	H,M,R	WB,ELISA	100
外泌体	CD9	YT0782	CD9 pAb	H,M,R	WB,IHC-p,IF,ELISA	25
	CD81	YT5394	CD81 pAb	H,M,R	IF,WB,ELISA	26
	CD63	YT5525	CD63 pAb	H	IF,WB,IHC-p,ELISA	26
自噬小体	ATG12	YT7272	ATG12 rabbit pAb	H, M,R	WB	15
	LC3B	YM3381	LC3B pAb	H,M,R	WB,IF,IHC-p	14,16
线粒体	COXIV	YT1074	COX4 pAb	H	WB,IHC-p,IF,ELISA	17
		YM3033	COX IV mAb(6C8)	H,R,M	WB,IHC-p,IF,	17
	VDAC1/Porin	YT5390	VDAC1 pAb	H,M,R	WB,ELISA	31
	ATP5A	YT0399	ATP5A pAb	H,M,R	WB,IHC-p,ELISA	60
	Tom20	YT4696	Tom20 pAb	H,M,R	WB,ELISA	17
肉质网	Calregulin	YT0620	Calregulin pAb	H,M,R,Mk	WB,IHC-p,IF,ELISA	48
	Calnexin	YT0613	Calnexin pAb	H,M,R	WB,IHC-p,IF,ELISA	90
	Endoplasmin	YT1560	Endoplasmin pAb	H,M	WB,IHC-p,IF,ELISA	92
	ERp57/ERp60	YT5220	ERp57 pAb	H,M,R	WB,IHC-p,ELISA	55
高尔基体	GRASP55	YT2053	GRASP55 pAb	H,M,R	WB,IHC-p,ELISA	47
	GOLGA2/GM130	YT6291	GM130 pAb	H, M, R	WB, ELISA	130
中心体	CENPJ	YN1577	CENPJ pAb	H,M	WB,ELISA	147
内含体	RAB11B	YT3919	Rab 11B pAb	H,M,R	WB,ELISA	28

发表文章

发表时间	应用Immunoway产品发表文章，精选部分文献如下：	货号	抗体名称
2020	K Ma, et al. "Neuroprotective effect of Hongjing I granules on erectile dysfunction in a rat model of bilateral cavernous nerve injury." Biomedicine & Pharmacotherapy	RS3511	Goat Anti Rabbit IgG (H&L) - Alexa Fluor 568
2019	Zhang, JiaRui, et al. "Intracellular ion and protein nanoparticle-induced osmotic pressure modify astrocyte swelling and brain edema in response to glutamate stimuli." Redox Biology	RS0001	HRP* Goat Anti Mouse IgG(H+L)
2020	Zhaozhao Si, et al. "Gold nanorods-based multicolor immunosensor for visual detection of enterovirus 71 infection." Microchimica Acta	RS030238	HRP* Polyclonal Goat Anti Human IgM(u chain)
2018	Li, Xiaojing, et al. "Selenoprotein S silencing triggers mouse hepatoma cells apoptosis and necrosis involving in intracellular calcium imbalance and ROS-mPTP-ATP." Biochimica Et Biophysica Acta-general Subjects	RS0002	HRP* Goat Anti Rabbit IgG(H+L)
2019	Zhang, Zi-Bin, et al. "miRNA-7a-2-3p Inhibits Neuronal Apoptosis in Oxygen-Glucose Deprivation (OGD) Model." Frontiers in neuroscience	RS0004	FITC* Goat Anti Rabbit IgG(H+L)
2018	Xiao, Ning, et al. "CDK5-mediated tau accumulation triggers methamphetamine-induced neuronal apoptosis via endoplasmic reticulum-associated degradation pathway." Toxicology letters	RS0003	FITC* Goat Anti Mouse IgG(H+L)
2018	Liu, Jiaxin, et al. "Bax inhibitor-1 suppresses early brain injury following experimental subarachnoid hemorrhage in rats." International journal of molecular medicine	RS030826	BIOTIN* Polyclonal Rabbit Anti Rat IgG(h+l)
2018	Zhao, Yang, et al. "The lncRNA MACC1-AS1 promotes gastric cancer cell metabolic plasticity via AMPK/Lin28 mediated mRNA stability of MACC1." Molecular cancer	YP0575	AMPKα1/2 (phospho Thr183/172) PAb
2014	Zhang, Kai-liang, et al. "Blockage of a miR-21/EGFR regulatory feedback loop augments anti-EGFR therapy in glioblastomas." Cancer letters	YT0247	AP-1 PAb
2018	Hu, Yunhui, et al. "Sabutoclax, pan-active BCL-2 protein family antagonist, overcomes drug resistance and eliminates cancer stem cells in breast cancer." Cancer letters	YM3041	Bcl-2 MAb(6B5)
2018	Huang, Jin-lan, et al. "The long non-coding RNA PTTG3P promotes cell growth and metastasis via up-regulating PTTG1 and activating PI3K/AKT signaling in hepatocellular carcinoma." Molecular cancer	YC0026	Caspase-3 PAb
2014	Liu, Meifang, et al. "The use of antibody modified liposomes loaded with AMO-1 to deliver oligonucleotides to ischemic myocardium for arrhythmia therapy." Biomaterials	YT1046	Connexin 43 PAb
2017	ZHANG, Haiyang, et al. Exosome-delivered EGFR regulates liver microenvironment to promote gastric cancer liver metastasis. Nature communications	YT1326	Desmin PAb
2015	Wang, Dapeng, et al. "Hypermethylation of the Keap1 gene inactivates its function, promotes Nrf2 nuclear accumulation, and is involved in arsenite-induced human keratinocyte transformation." Free Radical Biology and Medicine 89 (2015): 209-219.	YT1388	Dnmt3b PAb
2020	Q Zhou, et al. "PRL-3 facilitates Hepatocellular Carcinoma progression by co-amplifying with and activating FAK." Theranostics	YP0739	FAK (Tyr397) PAb
2020	Xixi Zheng, et al. "Exosomes derived from 5-fluorouracil-resistant colon cancer cells are enriched in GDF15 and can promote angiogenesis." Journal of Cancer	YT1659	FAK PAb
2015	Li, L., et al. Deacetylation of tumor-suppressor MST1 in Hippo pathway induces its degradation through HBXIP-elevated HDAC6 in promotion of breast cancer growth. Oncogene	YT2118	HDAC6 PAb
2020	TengPan, et al. "Centromere protein U (CENPU) enhances angiogenesis in triple-negative breast cancer by inhibiting ubiquitin-proteasomal degradation of COX-2." Cancer Letters	YT2133	HIF-1α PAb
2019	Zhang, Huiyun, et al. "Role of IL - 18 in atopic asthma is determined by balance of IL - 18/IL - 18BP/IL - 18R." Journal of cellular and molecular medicine	KE1140	Human IL-18 BPa ELISA
2019	Yu, Xinfeng, et al. "CXCL12/CXCR4 promotes inflammation-driven colorectal cancer progression through activation of RhoA signaling by sponging miR-133a-3p." Journal of Experimental & Clinical Cancer Research	KE1372	Human TNF-α ELISA
2019	Chuangxin Lin, et al. "Activation of mTORC1 in subchondral bone preosteoblasts promotes osteoarthritis by stimulating bone sclerosis and secretion of CXCL12." Bone Research	YM3064	Ki 67 MAb(4A8)
2015	Liu, Xing, et al. "TTK activates Akt and promotes proliferation and migration of hepatocellular carcinoma cells." Oncotarget	YT2690	Mdm2 PAb
2018	Chen, Jie, et al. "KLHL22 activates amino-acid-dependent mTORC1 signalling to promote tumorigenesis and ageing." Nature	YM3203	Myc-Tag PAb
2015	Zhang, Yuqiang, et al. "Mst3b promotes spinal cord neuronal regeneration by promoting growth cone branching out in spinal cord injury rats." Molecular neurobiology	YT2960	N/H/K-Ras PAb
2016	KIVELÄ, Riikka, et al. The transcription factor Prox1 is essential for satellite cell differentiation and muscle fibre-type regulation. Nature communications	YT5381	NFATc1 PAb
2016	Hu, Wen, et al. "Chronic glucocorticoids exposure enhances neurodegeneration in the frontal cortex and hippocampus via NLRP-1 inflammasome activation in male mice." Brain, behavior, and immunity	YM3111	NFκB p65 MAb(5G6)
2014	Li, Yinghui, et al. "The oncoprotein HBXIP enhances migration of breast cancer cells through increasing filopodia formation involving MEKK2/ERK1/2/Capn4 signaling." Cancer letters	YT3984	Raf-B PAb
2017	Chen, Yao, et al. "Activation of CD137 signaling accelerates vascular calcification in vivo and vitro." International journal of cardiology	YT5356	RUNX2 PAb
2018	Zhang, Hong, et al. "Therapeutic potential of bixin in PM2. 5 particles-induced lung injury in an Nrf2-dependent manner." Free Radical Biology and Medicine	YT4632	TGFβ1 PAb
2015	Liu, Fengchao, et al. "TGF-β1 acts through miR-155 to down-regulate TP53INP1 in promoting epithelial-mesenchymal transition and cancer stem cell phenotypes." Cancer letters	YT4879	Vimentin PAb
2019	Yang, Chun - He, et al. "Melatonin promotes secondary hair follicle development of early post - natal cashmere goat and improves cashmere quantity and quality by enhancing antioxidant capacity and suppressing apoptosis." Journal of pineal research	YM3028	β-actin MAb(5B7)



常用试剂

货号	中文名称	产品规格	目录价格	货期
RS0029	30%Acr-Bis(29:1)溶液	500ml	245	现货
RS0012	10%SDS溶液	500ml	400	现货
RS0013	1M Tris-HCl缓冲液,pH6.8	500ml	200	现货
RS0014	1.5M Tris-HCl缓冲液,pH8.8	500ml	200	现货
RS0015	SDS变性电泳上样缓冲液,5X	2x1ml/10x1ml	40/300	现货
RS0025	SDS电泳缓冲液 (Tris-Gly) ,10X	500ml	200	现货
D01-250	彩色预染marker(10-180kD)	250ul/250ul*2/250*10	360/720/3400	现货
RS0028	转移缓冲液 (Tris-Gly转膜液) ,10X	500ml	200	现货
RS0021	丽春红S染色液,1X	500ml	300	现货
RS0017	TBST洗涤缓冲液,pH7.5,10X	500ml	120	现货
RS0018	PBST洗涤缓冲液,pH7.5,10X	500ml	120	现货
RS0023	Tris缓冲盐溶液(TBS),pH7.4,10X	500ml	120	现货
RS0032	PBS缓冲液 pH7.2-7.4 无Ca ²⁺ , Mg ²⁺ ,1X	500ml	95	现货
RS0033	PBS缓冲液 pH7.2-7.4 无Ca ²⁺ , Mg ²⁺ ,10X	500ml	120	现货
RS0022	一抗二抗去除液	500ml	400	现货
YS0002	抗原修复液柠檬酸50X, pH6.0	100mL/250mL	80/160	现货
YS0003	抗原修复液20X,EDTA pH8.0	100mL/250mL	60/120	现货
YS0004	抗原修复液20X,EDTA PH9.0	100mL/250mL	60/120	现货
YS0001	免疫组化抗体稀释液	50mL/100mL/500mL	300/500/2000	现货
YS0005	苏木素染色液	250mL	750	现货
RS0017L	TBST洗涤缓冲液,pH7.5,10X	10x500mL	900	现货
RS0018L	PBST洗涤缓冲液,pH7.5,10X	10x500mL	900	现货
RS0023L	Tris缓冲盐溶液(TBS),pH7.4,10X	10x500mL	900	现货
RS0025L	SDS电泳缓冲液 (Tris-Gly) ,10X	10x500mL	1500	现货
RS0028L	转移缓冲液 (Tris-Gly转膜液) ,10X	10x500mL	1500	现货
RS0032L	PBS缓冲液 pH7.2-7.4 无Ca ²⁺ , Mg ²⁺ ,1X	10x500mL	700	现货
RS0033L	PBS缓冲液 pH7.2-7.4 无Ca ²⁺ , Mg ²⁺ ,10X	10x500mL	900	现货
RS0024	蛋白提取试剂盒	50Tests	1300	现货



Best tools for immunology research

 order.cn@immunoway.com

 www.immunoway.com

 400-8787-807