

## XBP1 (PT0319R) PT® Rabbit mAb

CatalogNo: YM8188 **Recombinant** 

### Key Features

#### Host Species

- Rabbit

#### Reactivity

- Human, Mouse, Rat,

#### Applications

- WB, IHC, IF, IP, ELISA

#### MW

- 29kD (Calculated)  
35kD, 60kD (Observed)

#### Isotype

- IgG, Kappa

### Recommended Dilution Ratios

IHC 1:200-1:1000

WB 1:1000-1:5000

IF 1:200-1:1000

ELISA 1:5000-1:20000

IP 1:50-1:200,

### Storage

**Storage\*** -15°C to -25°C/1 year (Do not lower than -25°C)**Formulation** PBS, 50% glycerol, 0.05% Proclin 300, 0.05% BSA

### Basic Information

**Clonality** Monoclonal**Clone Number** PT0319R

### Immunogen Information

**Sequence** X-box-binding protein 1**Specificity** Endogenous

---

## Target Information

**Gene name** >>Protein processing in endoplasmic reticulum;>>Non-alcoholic fatty liver disease;>>Alzheimer disease;>>Parkinson disease;>>Amyotrophic lateral sclerosis;>>Spinocerebellar ataxia;>>Pathways of neurodegeneration - multiple diseases;>>Lipid and atherosclerosis

**Protein Name** XBP1

Organism	Gene ID	UniProt ID
Human	<a href="#">7494;</a>	<a href="#">P17861;</a>
Mouse		<a href="#">O35426;</a>

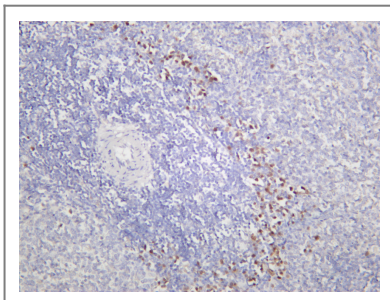
**Cellular Localization** Nucleus

**Tissue specificity** Expressed in plasma cells in rheumatoid synovium (PubMed:11460154). Over-expressed in primary breast cancer and metastatic breast cancer cells (PubMed:25280941). Isoform 1 and isoform 2 are expressed at higher level in proliferating as compared to confluent quiescent endothelial cells (PubMed:19416856).

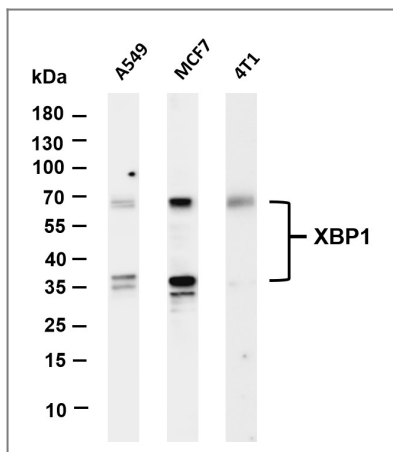
**Function** Disease:Genetic variations in XBP1 could be associated with susceptibility to major affective disorder type 7 (MAFD7) [MIM:612371]. Major affective disorders represent a class of mental disorders characterized by a disturbance in mood as their predominant feature.,Function:Transcription factor essential for hepatocyte growth, the differentiation of plasma cells, the immunoglobulin secretion, and the unfolded protein response (UPR). Acts during endoplasmic reticulum stress (ER) by activating unfolded protein response (UPR) target genes via direct binding to the UPR element (UPRE). Binds DNA preferably to the CRE-like element 5'-GATGACGTG[*TG*]<sub>N(3)</sub>[*AT*]<sub>T-3'</sub>, and also to some TPA response elements (TRE). Binds to the HLA DR-alpha promoter. Binds to the Tax-responsive element (TRE) of HTLV-I.,induction:Up-regulated by ATF6 via direct binding to the ERSE in response to endoplasmic reticulum stress.,similarity:Belongs to the bZIP family.,similarity:Contains 1 bZIP domain.,

---

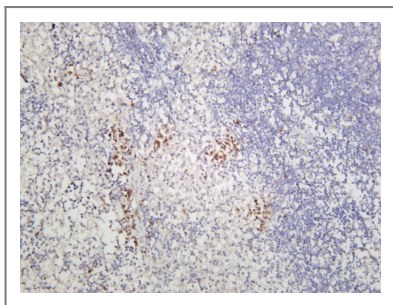
## Validation Data



Rat spleen was stained with anti-XBP1 (PT0319R) rabbit antibody



Various whole cell lysates were separated by 4-20% SDS-PAGE, and the membrane was blotted with anti-XBP1 (PT0319R) antibody. The HRP-conjugated Goat anti-Rabbit IgG(H + L) antibody was used to detect the antibody. Lane 1: A549 Lane 2: MCF7 Lane 3: 4T1 Predicted band size: 29kDa Observed band size: 35, 60kDa



Mouse spleen was stained with anti-XBP1 (PT0319R) rabbit antibody

## Contact information

Orders: [order.cn@immunoway.com](mailto:order.cn@immunoway.com)  
 Support: [support.cn@immunoway.com](mailto:support.cn@immunoway.com)  
 Telephone: 400-8787-807(China)  
 Website: <http://www.immunoway.com.cn>  
 Address: 2200 Ringwood Ave San Jose, CA 95131 USA



Please scan the QR code to access additional product information:  
**XBP1 (PT0319R)**  
**PT® Rabbit mAb**

For Research Use Only. Not for Use in Diagnostic Procedures.

[Antibody](#) | [ELISA Kits](#) | [Protein](#) | [Reagents](#)