

IL-1 β (PT0689R) PT® Rabbit mAb

CatalogNo: YM8498 **Recombinant** 

Key Features

Host Species

- Rabbit

Reactivity

- Mouse,Rat

Applications

- WB,IF,IP,ELISA

MW

- 31kD (Calculated)
- 31kD (Observed)

Isotype

- IgG,Kappa

Recommended Dilution Ratios

WB 1:2000-1:10000**IF 1:200-1:1000****ELISA 1:5000-1:20000****IP 1:50-1:200**

Storage

Storage* -15°C to -25°C/1 year(Do not lower than -25°C)**Formulation** PBS, 50% glycerol, 0.05% Proclin 300, 0.05%BSA

Basic Information

Clonality Monoclonal**Clone Number** PT0689R

Immunogen Information

Specificity Endogenous

Target Information

Gene name IL1B IL1F2

Protein Name Interleukin-1 beta (IL-1 beta) (Catabolin)

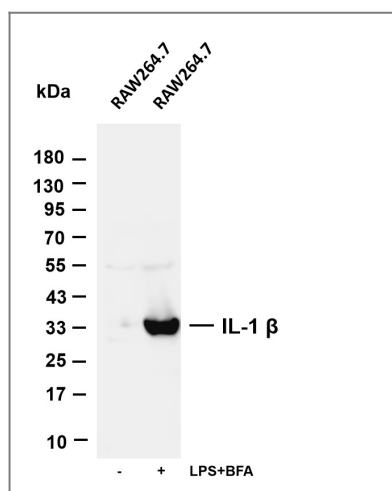
Organism	Gene ID	UniProt ID
Human	3553 ;	P01584 ;
Mouse	16176 ;	P10749 ;
Rat		Q63264 ;

Cellular Localization Secreted

Tissue specificity Expressed in activated monocytes/macrophages (at protein level).

Function Domain:The similarity among the IL-1 precursors suggests that the amino ends of these proteins serve some as yet undefined function.,Function:Produced by activated macrophages, IL-1 stimulates thymocyte proliferation by inducing IL-2 release, B-cell maturation and proliferation, and fibroblast growth factor activity. IL-1 proteins are involved in the inflammatory response, being identified as endogenous pyrogens, and are reported to stimulate the release of prostaglandin and collagenase from synovial cells.,online information:Interleukin-1 entry,online information:The Singapore human mutation and polymorphism database,similarity:Belongs to the IL-1 family.,subcellular location:The lack of a specific hydrophobic segment in the precursor sequence suggests that IL-1 is released by damaged cells or is secreted by a mechanism differing from that used for other secretory proteins.,subunit:Monomer.,

Validation Data



Various whole cell lysates were separated by 4-20% SDS-PAGE, and the membrane was blotted with anti-IL-1 β (PT0689R) antibody. The HRP-conjugated Goat anti-Rabbit IgG(H + L) antibody was used to detect the antibody. Lane 1: RAW264.7 Lane 2: HeLa was treated with Lipopolysaccharide (0.1 $\mu\text{g}/\text{mL}$) for 4 hours and then treated with Brefeldin A (1 $\mu\text{g}/\text{ml}$) for 3 hours Predicted band size: 31kDa Observed band size: 31kDa

Contact information

Orders: order.cn@immunoway.com
Support: support.cn@immunoway.com
Telephone: 400-8787-807(China)
Website: http://www.immunoway.com.cn
Address: 2200 Ringwood Ave San Jose, CA 95131 USA



Please scan the QR code
to access additional
product information:
IL-1 β (PT0689R)
PT® Rabbit mAb

For Research Use Only. Not for Use in Diagnostic Procedures.

[Antibody](#) | [ELISA Kits](#) | [Protein](#) | [Reagents](#)