

FPR2 Rabbit pAb

CatalogNo: YN2518 Orthogonal Validated 

Key Features

Host Species

- Rabbit

Reactivity

- Human,Rat,Mouse,Swine

Applications

- WB,ELISA

MW

- 38kD (Observed)

Isotype

- IgG

Recommended Dilution Ratios

WB 1:500-2000**ELISA 1:5000-20000**

Storage

Storage* -15°C to -25°C/1 year(Do not lower than -25°C)**Formulation** Liquid in PBS containing 50% glycerol, and 0.02% sodium azide.

Basic Information

Clonality Polyclonal

Immunogen Information

Immunogen Synthesized peptide derived from human protein . at AA range: 130-210**Specificity** FPR2 Polyclonal Antibody detects endogenous levels of protein.

Target Information

Gene name FPR2 FPRH1 FPRL1 LXA4R

Protein Name N-formyl peptide receptor 2 (FMLP-related receptor I) (FMLP-R-I) (Formyl peptide receptor-like 1) (HM63) (Lipoxin A4 receptor) (LXA4 receptor) (RFP)

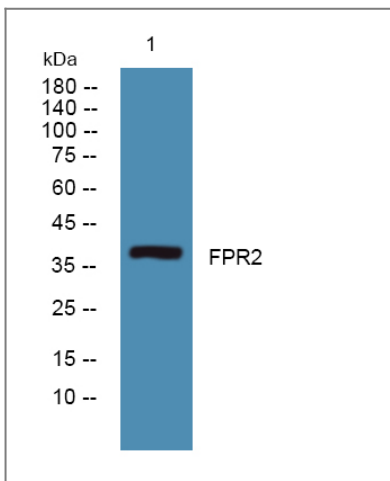
Organism	Gene ID	UniProt ID
Human	2358;	P25090;
Mouse		O88536;

Cellular Localization Cell membrane ; Multi-pass membrane protein. Associates with Amyloid-beta protein 42, product of APP, at the cell surface and the complex is then rapidly internalized (PubMed:11689470). Also internalized in the presence of humanin (PubMed:15465011). .

Tissue specificity Detected in lung, bone marrow, neutrophils, spleen and testis.

Function Function:Low affinity receptor for N-formyl-methionyl peptides, which are powerful neutrophils chemotactic factors. Binding of FMLP to the receptor causes activation of neutrophils. This response is mediated via a G-protein that activates a phosphatidylinositol-calcium second messenger system. The activation of LXA4R could result in an anti-inflammatory outcome counteracting the actions of proinflammatory signals such as LTB4 (leukotriene B4).,similarity:Belongs to the G-protein coupled receptor 1 family.,tissue specificity:Expressed abundantly in the lung and neutrophils. Also found in the spleen and testis.,

Validation Data



Western blot analysis of lysates from SW480 cells, primary antibody was diluted at 1:1000, 4° over night

Contact information

Orders: order.cn@immunoway.com
Support: support.cn@immunoway.com
Telephone: 400-8787-807(China)
Website: <http://www.immunoway.com.cn>
Address: 2200 Ringwood Ave San Jose, CA 95131 USA



Please scan the QR code to access additional product information:
FPR2 Rabbit pAb

