

## CD24 Rabbit pAb

CatalogNo: YT0741 **Orthogonal Validated** 

### Key Features

**Host Species**

- Rabbit

**Reactivity**

- Human, Mouse, Rat

**Applications**

- WB, ELISA

**MW**

- 35,45kD (Observed)

**Isotype**

- IgG

### Recommended Dilution Ratios

**WB 1:500-1:2000****ELISA 1:10000****Not yet tested in other applications.**

### Storage

**Storage\*** -15°C to -25°C/1 year (Do not lower than -25°C)**Formulation** Liquid in PBS containing 50% glycerol, 0.5% BSA and 0.02% sodium azide.

### Basic Information

**Clonality** Polyclonal

### Immunogen Information

**Immunogen** The antiserum was produced against synthesized peptide derived from human CD24. AA range:14-63**Specificity** CD24 Polyclonal Antibody detects endogenous levels of CD24 protein.

### Target Information

**Gene name** CD24

**Protein Name** Signal transducer CD24

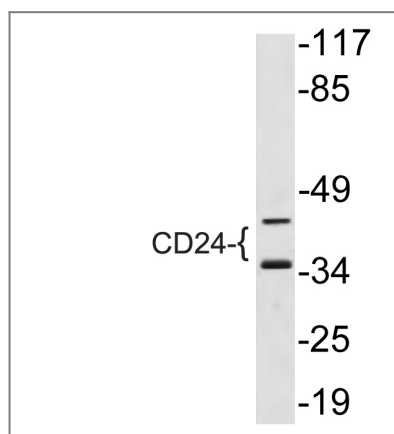
Organism	Gene ID	UniProt ID
Human	<a href="#">100133941</a> ;	<a href="#">P25063</a> ;
Mouse	<a href="#">12484</a> ;	<a href="#">P24807</a> ;
Rat	<a href="#">25145</a> ;	<a href="#">Q07490</a> ;

**Cellular Localization** Cell membrane; Lipid-anchor, GPI-anchor.

**Tissue specificity** B-cells. Expressed in a number of B-cell lines including P32/ISH and Namalwa. Expressed in erythroleukemia cell and small cell lung carcinoma cell lines. Also expressed on the surface of T-cells.

**Function** Disease:Genetic variations in CD24 are involved in multiple sclerosis susceptibility (MS) [MIM:126200]. MS is a neurodegenerative disorder characterized by the gradual accumulation of focal plaques of demyelination particularly in the periventricular areas of the brain. Peripheral nerves are not affected. Onset usually in third or fourth decade with intermittent progression over an extended period. The cause is still uncertain.,Function:Modulates B-cell activation responses. Signaling could be triggered by the binding of a lectin-like ligand to the CD24 carbohydrates, and transduced by the release of second messengers derived from the GPI-anchor. Promotes AG-dependent proliferation of B-cells, and prevents their terminal differentiation into antibody-forming cells.,induction:Expression is lost when primary B-cells are induced to differentiate in antibody-forming cells.,PTM:Extensively O-glycosylated.,similarity:Belongs to the CD24 family.,subunit:Interacts with LYN and FGR in a cell-type specific manner. Binds FRG in a small cell cancer line, LYN in the erythroleukemia cell line K562 and in Burkitt's lymphoma.,tissue specificity:B-cells. Expressed in a number of B-cell lines including P32/SH and Nawalwa. Expressed in erythroleukemia cell and small cell lung carcinoma cell lines. Also expressed on the surface of T-cells.,

## Validation Data



Western blot analysis of lysate from NIH/3T3 cells, using CD24 antibody.

## Contact information

Orders: order.cn@immunoway.com  
Support: support.cn@immunoway.com  
Telephone: 400-8787-807(China)  
Website: <http://www.immunoway.com.cn>  
Address: 2200 Ringwood Ave San Jose, CA 95131 USA



Please scan the QR code  
to access additional  
product information:  
**CD24 Rabbit pAb**

---

For Research Use Only. Not for Use in Diagnostic Procedures.

[Antibody](#) | [ELISA Kits](#) | [Protein](#) | [Reagents](#)