

TF Rabbit pAb

CatalogNo: YT5194

Key Features

Host Species

- Rabbit

Reactivity

- Human,Rat,Mouse,

Applications

- WB,IHC,IF,ELISA

MW

- 33kD (Observed)

Isotype

- IgG

Recommended Dilution Ratios

WB 1:500-1:2000

IHC: 1:100-300

ELISA 1:20000

IF 1:50-200

Storage

Storage* -15°C to -25°C/1 year(Do not lower than -25°C)

Formulation Liquid in PBS containing 50% glycerol, 0.5% BSA and 0.02% sodium azide.

Basic Information

Clonality Polyclonal

Immunogen Information

Immunogen The antiserum was produced against synthesized peptide derived from the Internal region of human F3. AA range:131-180

Specificity TF Polyclonal Antibody detects endogenous levels of TF protein.

Target Information

Gene name F3

Protein Name Tissue factor

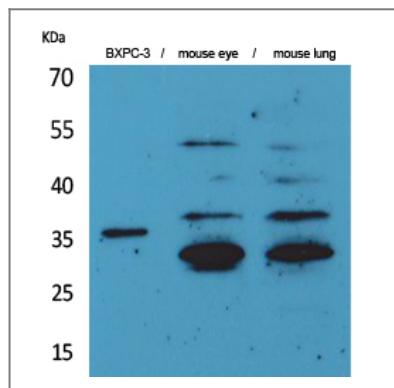
Organism	Gene ID	UniProt ID
Human	2152;	P13726;
Mouse		P20352;

Cellular Localization [Isoform 1]: Membrane ; Single-pass type I membrane protein .; [Isoform 2]: Secreted .

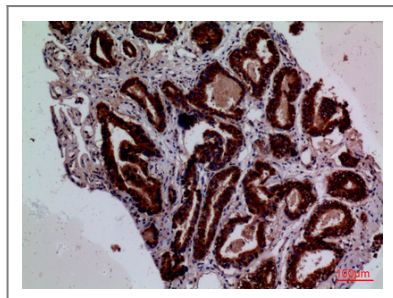
Tissue specificity Lung, placenta and pancreas.

Function Function:Initiates blood coagulation by forming a complex with circulating factor VII or VIIa. The [TF:VIIa] complex activates factors IX or X by specific limited proteolysis. TF plays a role in normal hemostasis by initiating the cell-surface assembly and propagation of the coagulation protease cascade.,induction:TF expression is highly dependent upon cell type. TF can also be induced by the inflammatory mediators interleukin 1 and TNF, as well as by endotoxin, to appear on monocytes and vascular endothelial cells as a component of cellular immune response.,online information:The Singapore human mutation and polymorphism database,online information:Tissue factor entry,similarity:Belongs to the tissue factor family.,

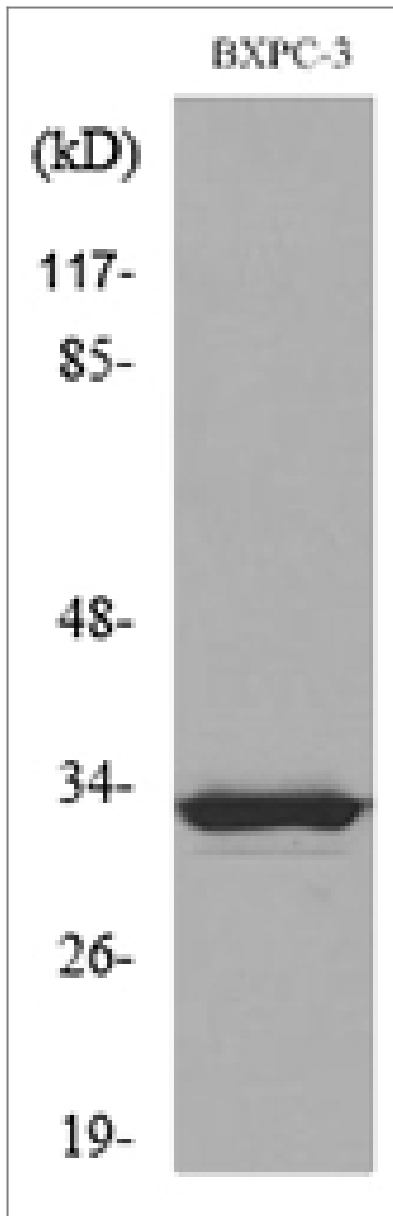
Validation Data



Western Blot analysis of BXPC-3, mouse eye, mouse lung cells using TF Polyclonal Antibody. Secondary antibody(catalog#:RS0002) was diluted at 1:20000



Immunohistochemical analysis of paraffin-embedded human-prostate-cancer, antibody was diluted at 1:100



Western blot analysis of lysate from BXPC-3 cells, using F3 Antibody.

Contact information

Orders: order.cn@immunoway.com
Support: support.cn@immunoway.com
Telephone: 400-8787-807(China)
Website: <http://www.immunoway.com.cn>
Address: 2200 Ringwood Ave San Jose, CA 95131 USA



Please scan the QR code to access additional product information:
TF Rabbit pAb