

## CD80 Rabbit pAb

CatalogNo: YT6014

### Key Features

#### Host Species

- Rabbit

#### Reactivity

- Human, Mouse

#### Applications

- IHC, IF, ELISA

#### Isotype

- IgG

### Recommended Dilution Ratios

IHC 1:50-200

ELISA 1:10000-20000

IF 1:50-200

### Storage

**Storage\*** -15°C to -25°C/1 year (Do not lower than -25°C)

**Formulation** Liquid in PBS containing 50% glycerol, 0.5% BSA and 0.02% sodium azide.

### Basic Information

**Clonality** Polyclonal

### Immunogen Information

**Immunogen** Synthetic peptide from human protein at AA range: 100-160

**Specificity** The antibody detects endogenous CD80

### Target Information

**Gene name** CD80 CD28LG CD28LG1 LAB7

**Protein Name** T-lymphocyte activation antigen CD80 (Activation B7-1 antigen) (BB1) (CTLA-4 counter-receptor B7.1) (B7) (CD antigen CD80)

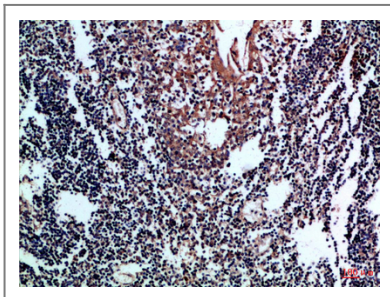
Organism	Gene ID	UniProt ID
Human	<a href="#">941</a> ;	<a href="#">P33681</a> ;
Mouse	<a href="#">12519</a> ;	<a href="#">Q00609</a> ;

**Cellular Localization** Membrane; Single-pass type I membrane protein.

**Tissue specificity** Expressed on activated B-cells, macrophages and dendritic cells.

**Function** Function:Involved in the costimulatory signal essential for T-lymphocyte activation. T-cell proliferation and cytokine production is induced by the binding of CD28 or CTLA-4 to this receptor.,similarity:Contains 1 Ig-like C2-type (immunoglobulin-like) domain.,similarity:Contains 1 Ig-like V-type (immunoglobulin-like) domain.,subunit:Interacts with adenovirus subgroup B fiber proteins and acts as a receptor for these viruses.,tissue specificity:Expressed on activated B-cells, macrophages and dendritic cells.,

## Validation Data



Immunohistochemical analysis of paraffin-embedded Human-tonsil, antibody was diluted at 1:100

## Contact information

Orders: [order.cn@immunoway.com](mailto:order.cn@immunoway.com)  
Support: [support.cn@immunoway.com](mailto:support.cn@immunoway.com)  
Telephone: 400-8787-807(China)  
Website: <http://www.immunoway.com.cn>  
Address: 2200 Ringwood Ave San Jose, CA 95131 USA



Please scan the QR code to access additional product information:  
**CD80 Rabbit pAb**